



CONNECT AND PROTECT

Advanced Customization Type 1

White Paper



HOFFMAN



Table of contents

- Introduction4
- Scope6
- Special dimensions6
- Machining8
- Finish10
- Mounting facilities14
- Assembly18
- Printed panels19
- Annex20

Introduction

nVent HOFFMAN's state-of-the-art engineering and manufacturing expertise enables modifications of standard enclosures to meet the very specific requirements of individual customers.

This means nVent HOFFMAN can make enclosures with an array of special solutions: holes, threading, cut-outs, increased corrosion resistance, custom colours, transparent windows, ventilation louvres, welded studs, and more.

Advanced Customization includes various customization features, and its purpose is to:

- Attract machine builders who require modified standard enclosures in addition to standard products;
- Attract project business with industrial end-users that often require basic machining for automation and control projects;
- Attract panel builders for larger projects, to reduce the workload often related to machining of the products.

The Advanced Customization is not meant for:

- Delivery of small quantities to customers that do not want to commit, based on the promise of sourcing standard enclosures from nVent HOFFMAN in the near future;
- Delivery of complex customization projects, if the order value is small.

The challenge with customized products is to produce according to the customer requirements, and to streamline communication between Sales and the Technical Office, as well as between Technical Office and other departments within the Supply Chain.

The customer requirements can be:

- Simple requirements: A customer needs a wall mounted enclosure MAS0403021R5 painted in RAL1015, for example;
- Complex requirements: A customer needs a floor standing enclosure that is integrated on the machine frame, it should resist vibration and should withstand the load of a transformer placed in the bottom of the enclosure.

nVent HOFFMAN's Advance Customization is split in two levels of customization and nVent HOFFMAN has called them 'Type 1' for the first level of complexity, and 'Type 2' for the high level complex customization.

There are two reasons for this categorization:

- It defines what Customer Service can and cannot quote without the intervention of the Technical Office.
- It defines what customer has access to Advanced Customization. The customization features classified as Type 1 are rather easy to define and to produce, and the risk and time spent on such a project justifies that these features are available to all customers if the initial guidelines are respected.



Scope

The scope of this document is to show in depth what possible customizations are included in nVent HOFFMAN's Advanced Customization Type 1 service.

Any customization feature not included in this document will be part of the Customization Type 2.

Special dimensions

nVent HOFFMAN enclosures can be manufactured with dimensions not included in the standard offering, but these available dimensions are limited.

The available dimensions depend on the enclosure range. You can find the complete list of available dimensions for Advanced Customization Type 1, per enclosure range, in the Annex (see page 20).



Machining



Machining includes different works made in the different parts of the enclosure, such as mounting plates, doors, roof plates, side or rear panels, and gland plates. Machining can also be done in some accessories, such as plinths.

The machining is done before the powder coating process, which means that the corrosion resistance on the surfaces around the machining will not be affected.

Machining is available for all the materials in nVent HOFFMAN's enclosure portfolio.

Cut outs

Any geometry is available.

The only limitation is the useful area in the part to be machined.



Holes

Any diameter for holes is available.

The only limitation is the useful area in the part to be machined.



Threads

Available threads are the following:
M3 – M4 – M5 – M6 – M8.

The thread of holes is limited by the material thickness, allowing for a maximum metric thread for each thickness.

- 1.2 mm thickness: Maximum Metric M4
- 1.5 mm thickness: Maximum Metric M5
- 2.0 mm thickness: Maximum Metric M8
- 3.0 mm thickness: Maximum Metric M8



Ventilation louvres

Available for parts made in steel, up to 2 mm thickness.



Finish



Powder coating of enclosures and accessories can be customized in different ways and, even some products which are not powder coated as standard, can be painted.

General limitations for finish customization:

- Finish can not be customized for parts with dimensions larger than 2200x1600x1000 mm.
- The same part of an enclosure or accessory (door, body, side panel, etc.) can not be painted with different features (colour, finish, etc.)
- Parts which are powder coated as standard can not be delivered without the powder coat.

In the next section we will present the available powder coating customizable features, with the corresponding limitations: colour, finish, UV resistance, corrosion resistance.

Colour

Enclosures or accessories powder coating can be required in a different colour than the standard RAL 7035, for enclosures and almost all the accessories, and the RAL 7022 for plinths.

The available colours in Advanced Customization Type 1 are the following:

| | | | | | | | | |
|---------|---------|---------|---------|---------|---------|---------|---------|---------|
| | | | | | | | | |
| RAL7035 | RAL1023 | RAL3004 | RAL4007 | RAL5019 | RAL6015 | RAL7004 | RAL7037 | RAL8016 |
| | | | | | | | | |
| RAL7032 | RAL1024 | RAL3005 | RAL4008 | RAL5020 | RAL6016 | RAL7005 | RAL7038 | RAL8017 |
| | | | | | | | | |
| RAL1000 | RAL1027 | RAL3007 | RAL4009 | RAL5021 | RAL6017 | RAL7006 | RAL7039 | RAL8019 |
| | | | | | | | | |
| RAL1001 | RAL1028 | RAL3009 | RAL4010 | RAL5022 | RAL6018 | RAL7008 | RAL7040 | RAL8022 |
| | | | | | | | | |
| RAL1002 | RAL1032 | RAL3011 | RAL5000 | RAL5023 | RAL6019 | RAL7009 | RAL7042 | RAL8023 |
| | | | | | | | | |
| RAL1003 | RAL1033 | RAL3012 | RAL5001 | RAL5024 | RAL6020 | RAL7010 | RAL7043 | RAL8024 |
| | | | | | | | | |
| RAL1004 | RAL1034 | RAL3014 | RAL5002 | RAL6000 | RAL6021 | RAL7011 | RAL7044 | RAL8025 |
| | | | | | | | | |
| RAL1005 | RAL2000 | RAL3015 | RAL5003 | RAL6001 | RAL6022 | RAL7012 | RAL7045 | RAL8028 |
| | | | | | | | | |
| RAL1006 | RAL2001 | RAL3016 | RAL5004 | RAL6002 | RAL6024 | RAL7013 | RAL7046 | RAL9001 |
| | | | | | | | | |
| RAL1007 | RAL2002 | RAL3017 | RAL5005 | RAL6003 | RAL6025 | RAL7015 | RAL7047 | RAL9002 |
| | | | | | | | | |
| RAL1011 | RAL2003 | RAL3018 | RAL5007 | RAL6004 | RAL6026 | RAL7016 | RAL8000 | RAL9003 |
| | | | | | | | | |
| RAL1012 | RAL2004 | RAL3020 | RAL5008 | RAL6005 | RAL6027 | RAL7021 | RAL8001 | RAL9004 |
| | | | | | | | | |
| RAL1013 | RAL2008 | RAL3022 | RAL5009 | RAL6006 | RAL6028 | RAL7022 | RAL8002 | RAL9005 |
| | | | | | | | | |
| RAL1014 | RAL2009 | RAL3027 | RAL5010 | RAL6007 | RAL6029 | RAL7023 | RAL8003 | RAL9010 |
| | | | | | | | | |
| RAL1015 | RAL2010 | RAL3031 | RAL5011 | RAL6008 | RAL6032 | RAL7024 | RAL8004 | RAL9011 |
| | | | | | | | | |
| RAL1016 | RAL2011 | RAL4001 | RAL5012 | RAL6009 | RAL6033 | RAL7026 | RAL8007 | RAL9016 |
| | | | | | | | | |
| RAL1017 | RAL2012 | RAL4002 | RAL5013 | RAL6010 | RAL6034 | RAL7030 | RAL8008 | RAL9017 |
| | | | | | | | | |
| RAL1018 | RAL3000 | RAL4003 | RAL5014 | RAL6011 | RAL7000 | RAL7031 | RAL8011 | RAL9018 |
| | | | | | | | | |
| RAL1019 | RAL3001 | RAL4004 | RAL5015 | RAL6012 | RAL7001 | RAL7033 | RAL8012 | |
| | | | | | | | | |
| RAL1020 | RAL3002 | RAL4005 | RAL5017 | RAL6013 | RAL7002 | RAL7034 | RAL8014 | |
| | | | | | | | | |
| RAL1021 | RAL3003 | RAL4006 | RAL5018 | RAL6014 | RAL7003 | RAL7036 | RAL8015 | |

Powder coating finish

The powder coating finish is available as:

- Structured
- Fine finish is available in Advance Customization Type 2

Smooth and metallic finish are not available.

Powder coating for outdoor applications

For outdoor enclosures and accessories exposed to the sunlight there is the possibility to change the standard epoxy-polyester powder by 100% polyester powder, providing UV resistance.

Corrosion resistance

For harsh environments with risk of corrosion a primer is available, which is applied before the external powder coating. This primer increases the corrosion resistance from 480 hours up to 1000 hours of salt spray test, according to ASTM B – 117:97.



Mounting facilities

Different type of fasteners are included in the mounting facilities, allowing to fix almost any equipment to the enclosures.

Available mounting facilities:

- Welded studs
- Press nuts
- Open rivet nuts
- Blind rivet nuts



Based on the material and metric of the stud, there is a limited number of available lengths:

Welded studs

Welded studs are available in two different materials:

- Mild steel, copper-plated
- Stainless steel



Mild steel, copper-plated

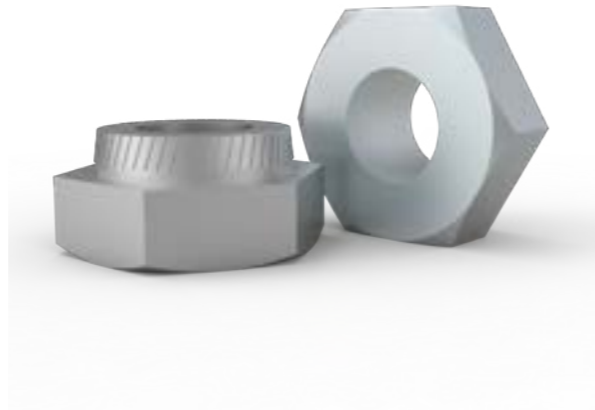
Stainless steel

| Metric | Available lengths (mm) | Available lengths (mm) |
|--------|---|--|
| M3 | 6 - 8 - 10 - 12 - 15 - 16 - 20 - 25 - 30 | 6 - 15 |
| M4 | 6 - 8 - 10 - 12 - 15 - 20 - 25 - 30 - 40 | 6 - 8 |
| M5 | 8 - 10 - 12 - 15 - 16 - 20 | 8 - 10 - 16 - 25 - 35 - 40 |
| M6 | 8 - 10 - 12 - 13 - 15 - 16 - 20 - 25 - 30 - 35 - 40 | 10 - 12 - 13 - 16 - 20 - 40 |
| M8 | 10 - 12 - 15 - 16 - 18 - 20 - 25 - 30 - 35 - 40 | 12 - 16 - 18 - 24 - 25 - 30 - 35 - 45 - 50 |

Press nuts

Press nuts represent a solution when metal sheets need to be provided with threads. Two different materials are available:

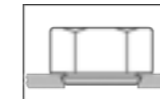
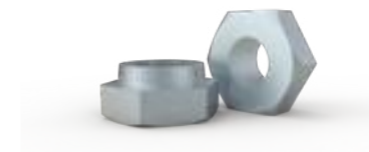
- Zinc plated steel
- Stainless steel



Based on the material, there is a limited number of available metrics:

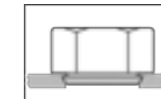
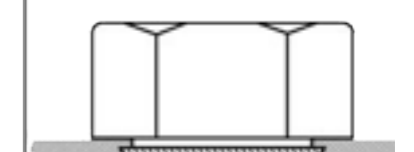
Zinc plated steel

| Metric |
|--------|
| M3 |
| M4 |
| M5 |
| M6 |
| M8 |
| M10 |
| M12 |



Stainless steel

| Metric |
|--------|
| M3 |
| M4 |
| M5 |
| M6 |
| M12 |



Open rivet nuts

Open rivet nuts are available in two different materials:

- Zinc plated steel
- Stainless steel



Based on the material, there is a limited number of available metrics:

Zinc plated steel

| Metric |
|--------|
| M3 |
| M4 |
| M5 |
| M6 |
| M8 |
| M10 |
| M12 |



Stainless steel

| Metric |
|--------|
| M3 |
| M4 |
| M5 |
| M6 |
| M10 |
| M12 |



Blind rivet nuts

Blind rivet nuts are available in two different materials:

- Zinc plated steel
- Stainless steel



Based on the material, there is a limited number of available metrics:

Zinc plated steel

| Metric |
|--------|
| M6 |
| M8 |



Stainless steel

| Metric |
|--------|
| M4 |
| M5 |
| M6 |
| M8 |
| M12 |



Assembly



The thinking behind the Mechanical Assembly services offered is that nVent HOFFMAN wants to help customers maintain a competitive price and sustain a healthy bottom line.

The purpose of the service is to help customers reduce their costs, by taking over some of the labour-intensive assembly work, when it comes to standard or customized enclosures.

The Mechanical Assembly services include the assembly of standard accessories, and baying of standard enclosures.

The Mechanical Assembly services in Advanced Customization Type 1 include the assembly of standard accessories, and the baying of standard enclosures. Any *additional assembly will be part of Advanced Customization Type 2.

* The mechanical assembly services never include mounting of DIN-rails components, wiring, or complete assembly of a panel.

Printed panels



Printed panels customization service offers digital printing on panels, which means we can provide our customers with fully finished customized panels, with consistent quality and total reliability.

You can find below the list of parts which can be printed:

- Floor standing: door, removable panels;
- Wall mounted: door, gland plates;
- Terminal boxes: cover;
- HMI consoles: doors, lids and removable panels;

The limitation for the printed panels service are the following:

- The service is not available for stainless steel surfaces;
- The maximum height of the panel to be printed is 64 mm;
- Maximum area to be printed is of 1600 x 3000 mm

Annex

This Annex presents the available dimensions in Advanced Customization Type 1.

Floor Standing Enclosures
Steel Range | Mild Steel
Combinable, Single Door | MCS

| Height | Width | Depth | | | | | | |
|--------|-------|-------|-----|-----|-----|-----|-----|------|
| | | 400 | 500 | 600 | 700 | 800 | 900 | 1000 |
| 1400 | 400 | - | - | - | - | - | - | - |
| | 500 | - | - | - | - | - | - | - |
| | 600 | ■ | ■ | ■ | - | ■ | - | ■ |
| | 700 | - | - | - | ■ | - | - | - |
| | 800 | ■ | ■ | ■ | - | ■ | - | ■ |
| | 900 | - | - | - | - | - | - | - |
| | 1000 | ■ | - | - | - | - | - | - |
| 1600 | 400 | - | - | - | - | - | - | - |
| | 500 | - | - | - | - | - | - | - |
| | 600 | ■ | ■ | ■ | - | ■ | - | - |
| | 700 | - | - | - | ■ | - | - | ■ |
| | 800 | ■ | ■ | ■ | - | ■ | - | ■ |
| | 900 | - | - | - | - | - | - | - |
| | 1000 | ■ | ■ | ■ | ■ | ■ | - | ■ |
| 1800 | 400 | ■ | ■ | ■ | - | - | - | - |
| | 500 | - | ■ | - | - | - | - | - |
| | 600 | ■ | ■ | ■ | - | ■ | - | ■ |
| | 700 | - | - | - | - | ■ | - | - |
| | 800 | ■ | ■ | ■ | - | ■ | - | ■ |
| | 900 | - | - | - | - | - | - | - |
| | 1000 | ■ | ■ | ■ | - | ■ | - | ■ |
| 2000 | 400 | ■ | ■ | ■ | - | ■ | - | - |
| | 500 | - | ■ | - | - | - | - | - |
| | 600 | ■ | ■ | ■ | - | ■ | - | ■ |
| | 700 | ■ | - | ■ | - | ■ | - | ■ |
| | 800 | ■ | ■ | ■ | ■ | ■ | - | ■ |
| | 900 | - | ■ | ■ | - | ■ | - | - |
| | 1000 | ■ | ■ | ■ | - | ■ | - | ■ |
| 2200 | 400 | - | - | - | - | - | - | - |
| | 500 | - | - | - | - | - | - | - |
| | 600 | ■ | ■ | ■ | - | ■ | - | ■ |
| | 700 | - | - | - | - | - | - | ■ |
| | 800 | ■ | ■ | ■ | ■ | ■ | - | ■ |
| 900 | - | - | ■ | - | - | - | - | |
| 1000 | ■ | ■ | ■ | - | ■ | - | ■ | |



Floor Standing Enclosures
Steel Range | Mild Steel
Combinable, Double Door | MCD

| Height | Width | Depth | | | | | | |
|--------|-------|-------|-----|-----|-----|-----|-----|------|
| | | 400 | 500 | 600 | 700 | 800 | 900 | 1000 |
| 1400 | 800 | ■ | - | - | - | - | ■ | - |
| | 1000 | - | - | - | - | - | - | - |
| | 1200 | - | - | ■ | - | - | - | - |
| | 1400 | - | - | ■ | - | - | - | - |
| 1600 | 800 | ■ | ■ | - | - | - | - | - |
| | 1000 | ■ | ■ | ■ | - | - | - | - |
| | 1200 | ■ | ■ | ■ | - | - | - | - |
| | 1400 | - | - | - | - | - | - | - |
| 1800 | 800 | ■ | ■ | ■ | - | ■ | - | - |
| | 1000 | ■ | ■ | ■ | - | ■ | - | - |
| | 1200 | ■ | ■ | ■ | - | ■ | - | - |
| | 1400 | - | ■ | ■ | - | ■ | - | - |
| 2000 | 800 | ■ | ■ | ■ | - | ■ | - | - |
| | 1000 | ■ | ■ | ■ | - | ■ | - | - |
| | 1200 | ■ | ■ | ■ | - | ■ | - | - |
| | 1400 | ■ | ■ | ■ | - | ■ | - | - |
| 2200 | 800 | - | - | ■ | - | ■ | - | - |
| | 1000 | ■ | ■ | ■ | - | ■ | - | - |
| | 1200 | ■ | ■ | ■ | - | ■ | - | - |
| | 1400 | - | ■ | - | - | ■ | - | - |
| 1600 | - | ■ | ■ | - | ■ | - | - | |



Floor Standing Enclosures
 Steel Range | Mild Steel
 Compact, Single Door | MKS

| Height | Width | Depth | | | |
|--------|-------|-------|-----|-----|-----|
| | | 300 | 400 | 500 | 600 |
| 1200 | 600 | - | - | - | - |
| | 700 | - | - | - | - |
| | 800 | - | ■ | - | - |
| | 900 | - | - | - | - |
| | 1000 | - | - | - | ■ |
| 1400 | 600 | - | - | - | - |
| | 700 | - | - | - | - |
| | 800 | - | - | - | - |
| | 900 | - | - | - | - |
| | 1000 | - | ■ | ■ | - |
| 1600 | 600 | ■ | ■ | - | - |
| | 700 | - | - | - | - |
| | 800 | ■ | ■ | ■ | ■ |
| | 900 | - | - | - | - |
| | 1000 | ■ | ■ | ■ | ■ |
| 1800 | 600 | ■ | ■ | - | - |
| | 700 | - | - | - | - |
| | 800 | ■ | ■ | ■ | ■ |
| | 900 | - | - | - | - |
| | 1000 | ■ | ■ | ■ | ■ |
| 2000 | 600 | ■ | ■ | - | ■ |
| | 700 | - | - | - | - |
| | 800 | ■ | ■ | ■ | ■ |
| | 900 | - | - | - | - |
| 1000 | ■ | ■ | ■ | ■ | |



Floor Standing Enclosures
 Steel Range | Mild Steel
 Compact, Double Door | MKD

| Height | Width | Depth | | | |
|--------|-------|-------|-----|-----|-----|
| | | 300 | 400 | 500 | 600 |
| 1200 | 800 | - | - | - | - |
| | 1000 | - | - | - | - |
| | 1200 | - | - | - | - |
| | 1400 | - | - | - | - |
| | 1600 | - | ■ | ■ | - |
| 1400 | 800 | - | - | - | - |
| | 1000 | - | ■ | - | - |
| | 1200 | - | - | - | - |
| | 1400 | - | - | - | - |
| | 1600 | - | ■ | - | - |
| 1600 | 800 | - | - | - | - |
| | 1000 | - | ■ | ■ | ■ |
| | 1200 | - | ■ | - | ■ |
| | 1400 | - | ■ | - | - |
| | 1600 | - | ■ | - | - |
| 1800 | 800 | - | ■ | - | - |
| | 1000 | - | ■ | ■ | - |
| | 1200 | - | ■ | ■ | ■ |
| | 1400 | - | ■ | - | - |
| | 1600 | - | ■ | ■ | - |
| 2000 | 800 | - | ■ | - | - |
| | 1000 | - | - | - | - |
| | 1200 | - | ■ | ■ | ■ |
| | 1400 | - | ■ | - | - |
| 1600 | - | ■ | ■ | - | |



Floor Standing Enclosures
 Steel Range | Stainless Steel
 Combinable, Single Door | MCSS

| Height | Width | Depth | | | | |
|--------|-------|-------|-----|-----|-----|------|
| | | 400 | 500 | 600 | 800 | 1000 |
| 1400 | 600 | ■ | ■ | ■ | - | - |
| | 700 | - | - | - | - | - |
| | 800 | ■ | ■ | ■ | ■ | ■ |
| | 1000 | - | - | - | - | - |
| 1600 | 600 | ■ | ■ | ■ | - | - |
| | 700 | - | - | - | - | - |
| | 800 | ■ | ■ | ■ | ■ | ■ |
| | 1000 | ■ | ■ | ■ | ■ | ■ |
| 1800 | 600 | ■ | ■ | ■ | - | - |
| | 700 | - | - | - | - | - |
| | 800 | ■ | ■ | ■ | ■ | ■ |
| | 1000 | ■ | ■ | ■ | ■ | ■ |
| 2000 | 600 | ■ | ■ | ■ | - | - |
| | 700 | - | - | - | - | - |
| | 800 | ■ | ■ | ■ | ■ | ■ |
| | 1000 | ■ | ■ | ■ | ■ | ■ |
| 2200 | 600 | - | - | - | - | - |
| | 700 | - | - | - | - | - |
| | 800 | - | - | - | - | - |
| | 1000 | - | - | - | - | - |



Floor Standing Enclosures
 Steel Range | Stainless Steel
 Combinable, Double Door | MCDS

| Height | Width | Depth | | | | |
|--------|-------|-------|-----|-----|-----|------|
| | | 400 | 500 | 600 | 800 | 1000 |
| 1400 | 800 | - | - | - | - | - |
| | 1000 | - | - | - | - | - |
| | 1200 | - | - | - | - | - |
| | 1400 | - | - | - | - | - |
| 1600 | 800 | - | - | - | - | - |
| | 1000 | - | ■ | - | - | - |
| | 1200 | - | ■ | - | - | - |
| | 1400 | - | - | - | - | - |
| 1800 | 800 | - | ■ | - | - | - |
| | 1000 | - | ■ | ■ | - | - |
| | 1200 | - | ■ | ■ | - | - |
| | 1400 | - | - | - | - | - |
| 2000 | 800 | - | - | - | - | - |
| | 1000 | - | ■ | ■ | ■ | - |
| | 1200 | - | ■ | ■ | ■ | - |
| | 1400 | - | - | - | - | - |
| 2200 | 800 | - | - | - | - | - |
| | 1000 | - | - | - | - | - |
| | 1200 | - | - | - | - | - |
| | 1400 | - | - | - | - | - |



Floor Standing Enclosures
 Steel Range | Stainless Steel
 Compact, Single Door | EKSS

| Height | Width | Depth | | | | | |
|--------|-------|-------|-----|-----|-----|-----|-----|
| | | 300 | 400 | 500 | 600 | 700 | 800 |
| 1200 | 600 | - | ■ | ■ | ■ | - | - |
| | 700 | - | - | - | - | - | - |
| | 800 | - | ■ | ■ | ■ | - | - |
| 1400 | 900 | - | - | - | - | - | - |
| | 1000 | - | - | - | - | - | - |
| | 600 | - | ■ | ■ | ■ | - | - |
| | 700 | - | - | - | - | - | - |
| 1600 | 800 | - | ■ | ■ | ■ | - | - |
| | 900 | - | - | - | - | - | - |
| | 1000 | - | ■ | ■ | ■ | - | - |
| | 600 | - | ■ | ■ | ■ | - | - |
| 1800 | 700 | - | - | - | - | - | - |
| | 800 | - | ■ | ■ | ■ | - | ■ |
| | 900 | - | - | - | - | - | - |
| | 1000 | - | ■ | ■ | ■ | - | ■ |
| 2000 | 600 | - | ■ | ■ | ■ | - | - |
| | 700 | - | - | - | - | - | - |
| | 800 | - | ■ | ■ | ■ | - | ■ |
| | 900 | - | - | - | - | - | - |
| 2000 | 1000 | - | ■ | ■ | ■ | - | ■ |



Floor Standing Enclosures
 Steel Range | Stainless Steel
 Compact, Double Door | EKDS

| Height | Width | Depth | | | | | |
|--------|-------|-------|-----|-----|-----|-----|-----|
| | | 300 | 400 | 500 | 600 | 700 | 800 |
| 1200 | 800 | - | - | - | - | - | - |
| | 1000 | - | ■ | ■ | - | - | - |
| | 1200 | - | ■ | ■ | - | - | - |
| 1400 | 1400 | - | - | - | - | - | - |
| | 1600 | - | ■ | ■ | - | - | - |
| | 800 | - | - | - | - | - | - |
| | 1000 | - | ■ | ■ | ■ | - | - |
| 1600 | 1200 | - | ■ | ■ | ■ | - | - |
| | 1400 | - | - | - | ■ | - | - |
| | 1600 | - | ■ | ■ | ■ | - | - |
| | 800 | - | - | - | - | - | - |
| 1800 | 1000 | - | ■ | ■ | ■ | - | - |
| | 1200 | - | ■ | ■ | ■ | - | - |
| | 1400 | - | - | - | ■ | - | ■ |
| | 1600 | - | ■ | ■ | ■ | - | - |
| 2000 | 800 | - | - | - | - | - | - |
| | 1000 | - | ■ | ■ | ■ | - | - |
| | 1200 | - | ■ | ■ | ■ | - | - |
| | 1400 | - | - | - | ■ | - | - |
| 2000 | 1600 | - | ■ | ■ | ■ | - | ■ |



Wall Mounted Enclosures
 Steel Range | Mild Steel
 Single door | MAS

| Height | Width | Depth | | | | |
|--------|-------|-------|-----|-----|-----|-----|
| | | 155 | 210 | 260 | 300 | 400 |
| 200 | 200 | ■ | - | - | - | - |
| | 250 | - | - | - | - | - |
| | 300 | ■ | - | - | - | - |
| | 380 | - | - | - | - | - |
| | 400 | ■ | - | - | - | - |
| | 500 | - | - | - | - | - |
| | 600 | - | - | - | - | - |
| | 700 | - | - | - | - | - |
| | 760 | - | - | - | - | - |
| | 800 | - | - | - | - | - |
| 250 | 200 | ■ | - | - | - | - |
| | 250 | ■ | ■ | - | - | - |
| | 300 | ■ | ■ | - | - | - |
| | 380 | - | - | - | - | - |
| | 400 | ■ | ■ | - | - | - |
| | 500 | - | - | - | - | - |
| | 600 | - | - | - | - | - |
| | 700 | - | - | - | - | - |
| 300 | 200 | ■ | - | - | - | - |
| | 250 | ■ | ■ | - | - | - |
| | 300 | ■ | ■ | - | - | - |
| | 380 | - | - | - | - | - |
| | 400 | ■ | ■ | - | - | - |
| | 500 | ■ | ■ | - | - | - |
| | 600 | - | - | - | - | - |
| | 700 | - | - | - | - | - |
| 350 | 200 | - | - | - | - | - |
| | 250 | ■ | - | - | - | - |
| | 300 | - | - | - | - | - |
| | 380 | - | - | - | - | - |
| | 400 | - | - | - | - | - |
| | 500 | - | - | - | - | - |
| | 600 | - | - | - | - | - |
| | 700 | - | - | - | - | - |
| 800 | - | - | - | - | - | |



| Height | Width | Depth | | | | |
|--------|-------|-------|-----|-----|-----|-----|
| | | 155 | 210 | 260 | 300 | 400 |
| 380 | 200 | - | - | - | - | - |
| | 250 | - | - | - | - | - |
| | 300 | - | - | - | - | - |
| | 380 | - | ■ | - | ■ | - |
| | 400 | - | - | - | - | - |
| | 500 | - | - | - | - | - |
| | 600 | - | - | - | - | - |
| | 700 | - | - | - | - | - |
| | 760 | - | - | - | - | - |
| | 800 | - | - | - | - | - |
| 400 | 200 | - | - | - | - | - |
| | 250 | - | - | - | - | - |
| | 300 | ■ | ■ | ■ | - | - |
| | 380 | - | - | - | - | - |
| | 400 | ■ | ■ | ■ | ■ | - |
| | 500 | ■ | ■ | ■ | ■ | - |
| | 600 | - | ■ | ■ | ■ | - |
| | 700 | - | - | - | - | - |
| | 760 | - | - | - | - | - |
| | 800 | - | ■ | ■ | ■ | - |
| 500 | 200 | - | - | - | - | - |
| | 250 | - | - | - | - | - |
| | 300 | ■ | ■ | - | - | - |
| | 380 | - | - | - | - | - |
| | 400 | ■ | ■ | ■ | ■ | - |
| | 500 | ■ | ■ | - | ■ | - |
| | 600 | - | ■ | ■ | - | - |
| | 700 | - | ■ | ■ | ■ | - |
| | 760 | - | - | - | - | - |
| | 800 | - | - | - | - | - |
| 600 | 200 | - | - | - | - | - |
| | 250 | - | - | - | - | - |
| | 300 | ■ | ■ | - | ■ | - |
| | 380 | - | - | - | - | - |
| | 400 | ■ | ■ | ■ | ■ | ■ |
| | 500 | ■ | ■ | ■ | ■ | ■ |
| | 600 | - | ■ | - | ■ | ■ |
| | 700 | - | ■ | - | - | - |
| | 760 | - | - | - | - | - |
| | 800 | - | ■ | ■ | ■ | ■ |
| 700 | 200 | - | - | - | - | - |
| | 250 | - | - | - | - | - |
| | 300 | - | - | - | - | - |
| | 380 | - | - | - | - | - |
| | 400 | - | ■ | ■ | ■ | - |
| | 500 | - | ■ | ■ | ■ | ■ |
| | 600 | - | ■ | ■ | - | - |
| | 700 | - | - | - | - | - |
| | 760 | - | - | - | - | - |
| | 800 | - | ■ | ■ | ■ | - |

| Height | Width | Depth | | | | |
|--------|-------|-------|-----|-----|-----|-----|
| | | 155 | 210 | 260 | 300 | 400 |
| 760 | 200 | - | - | - | - | - |
| | 250 | - | - | - | - | - |
| | 300 | - | - | - | - | - |
| | 380 | - | - | - | - | - |
| | 400 | - | - | - | - | - |
| | 500 | - | - | - | - | - |
| | 600 | - | ■ | - | ■ | - |
| | 700 | - | - | - | - | - |
| | 760 | - | ■ | - | ■ | - |
| | 800 | - | - | - | - | - |
| 800 | 200 | - | - | - | - | - |
| | 250 | - | - | - | - | - |
| | 300 | - | - | - | - | - |
| | 380 | - | - | - | - | - |
| | 400 | - | ■ | ■ | ■ | - |
| | 500 | - | - | - | ■ | ■ |
| | 600 | - | ■ | ■ | ■ | ■ |
| | 700 | - | - | - | - | - |
| | 760 | - | - | - | - | - |
| | 800 | - | - | - | - | - |
| 1000 | 200 | - | - | - | - | - |
| | 250 | - | - | - | - | - |
| | 300 | - | - | - | - | - |
| | 380 | - | - | - | - | - |
| | 400 | - | - | - | - | - |
| | 500 | - | - | - | ■ | - |
| | 600 | - | - | ■ | ■ | ■ |
| | 700 | - | - | - | ■ | ■ |
| | 760 | - | - | - | - | - |
| | 800 | - | - | ■ | ■ | ■ |
| 1200 | 200 | - | - | - | - | - |
| | 250 | - | - | - | - | - |
| | 300 | - | - | - | - | - |
| | 380 | - | - | - | - | - |
| | 400 | - | - | - | - | - |
| | 500 | - | - | - | - | - |
| | 600 | - | - | - | ■ | ■ |
| | 700 | - | - | - | - | - |
| | 760 | - | - | - | - | - |
| | 800 | - | - | - | ■ | ■ |
| 1400 | 200 | - | - | - | - | - |
| | 250 | - | - | - | - | - |
| | 300 | - | - | - | - | - |
| | 380 | - | - | - | - | - |
| | 400 | - | - | - | - | - |
| | 500 | - | - | - | - | - |
| | 600 | - | - | - | ■ | ■ |
| | 700 | - | - | - | - | - |
| | 760 | - | - | - | - | - |
| | 800 | - | - | - | ■ | ■ |

Wall Mounted Enclosures
 Steel Range | Mild Steel
 Double door | MAD

| Height | Width | Depth | | | |
|--------|-------|-------|-----|-----|-----|
| | | 210 | 260 | 300 | 400 |
| 600 | 800 | ■ | ■ | ■ | - |
| | 1000 | ■ | ■ | ■ | ■ |
| | 1200 | ■ | ■ | ■ | ■ |
| 760 | 800 | - | - | - | - |
| | 1000 | ■ | - | ■ | - |
| | 1200 | - | - | ■ | - |
| 800 | 800 | - | ■ | ■ | - |
| | 1000 | - | ■ | ■ | ■ |
| | 1200 | - | ■ | ■ | ■ |
| 1000 | 800 | - | - | ■ | - |
| | 1000 | - | - | ■ | ■ |
| | 1200 | - | - | ■ | ■ |
| 1200 | 800 | - | - | ■ | - |
| | 1000 | - | - | ■ | ■ |
| | 1200 | - | - | ■ | ■ |
| 1400 | 800 | - | - | - | - |
| | 1000 | - | - | ■ | - |
| | 1200 | - | - | - | - |



Wall Mounted Enclosures
 Steel Range | Stainless Steel
 Single door | ASR

| Height | Width | Depth | | | |
|--------|-------|-------|-----|-----|-----|
| | | 150 | 210 | 300 | 400 |
| 180 | 200 | - | - | - | - |
| | 240 | ■ | - | - | - |
| | 250 | - | - | - | - |
| | 300 | - | - | - | - |
| | 360 | - | - | - | - |
| | 380 | - | - | - | - |
| | 400 | - | - | - | - |
| | 500 | - | - | - | - |
| | 600 | - | - | - | - |
| | 700 | - | - | - | - |
| 200 | 200 | - | - | - | - |
| | 240 | - | - | - | - |
| | 250 | - | - | - | - |
| | 300 | ■ | - | - | - |
| | 360 | - | - | - | - |
| | 380 | - | - | - | - |
| | 400 | ■ | - | - | - |
| | 500 | - | - | - | - |
| | 600 | - | - | - | - |
| | 700 | - | - | - | - |
| 240 | 200 | - | - | - | - |
| | 240 | ■ | - | - | - |
| | 250 | - | - | - | - |
| | 300 | - | - | - | - |
| | 360 | ■ | - | - | - |
| | 380 | - | - | - | - |
| | 400 | - | - | - | - |
| | 500 | - | - | - | - |
| | 600 | - | - | - | - |
| | 700 | - | - | - | - |
| 250 | 200 | - | - | - | - |
| | 240 | - | - | - | - |
| | 250 | - | - | - | - |
| | 300 | - | - | - | - |
| | 360 | - | - | - | - |
| | 380 | - | - | - | - |
| | 400 | - | - | - | - |
| | 500 | - | - | - | - |
| | 600 | - | - | - | - |
| | 700 | - | - | - | - |
| 800 | - | - | - | - | |



| Height | Width | Depth | | | |
|--------|-------|-------|-----|-----|-----|
| | | 150 | 210 | 300 | 400 |
| 300 | 200 | ■ | - | - | - |
| | 240 | - | - | - | - |
| | 250 | ■ | ■ | - | - |
| | 300 | ■ | ■ | - | - |
| | 360 | - | - | - | - |
| | 380 | - | - | - | - |
| | 400 | ■ | ■ | - | - |
| | 500 | - | - | - | - |
| | 600 | - | ■ | - | - |
| | 700 | - | - | - | - |
| 360 | 200 | - | - | - | - |
| | 240 | ■ | - | - | - |
| | 250 | - | - | - | - |
| | 300 | - | - | - | - |
| | 360 | - | - | - | - |
| | 380 | - | - | - | - |
| | 400 | - | - | - | - |
| | 500 | - | - | - | - |
| | 600 | - | - | - | - |
| | 700 | - | - | - | - |
| 380 | 200 | - | - | - | - |
| | 240 | - | - | - | - |
| | 250 | - | - | - | - |
| | 300 | - | - | - | - |
| | 360 | - | - | - | - |
| | 380 | ■ | ■ | - | - |
| | 400 | - | - | - | - |
| | 500 | - | - | - | - |
| | 600 | - | - | - | - |
| | 700 | - | - | - | - |
| 400 | 200 | - | - | - | - |
| | 240 | - | - | - | - |
| | 250 | - | - | - | - |
| | 300 | ■ | ■ | - | - |
| | 360 | - | - | - | - |
| | 380 | - | - | - | - |
| | 400 | ■ | ■ | ■ | - |
| | 500 | ■ | ■ | - | - |
| | 600 | - | ■ | ■ | - |
| | 700 | - | - | - | - |
| 800 | - | ■ | ■ | - | |

| Height | Width | Depth | | | |
|--------|-------|-------|-----|-----|-----|
| | | 150 | 210 | 300 | 400 |
| 500 | 200 | - | - | - | - |
| | 240 | - | - | - | - |
| | 250 | - | - | - | - |
| | 300 | ■ | ■ | - | - |
| | 360 | - | - | - | - |
| | 380 | - | - | - | - |
| | 400 | ■ | ■ | ■ | - |
| | 500 | - | ■ | ■ | - |
| | 600 | - | - | - | - |
| | 700 | - | - | - | - |
| 600 | 200 | - | - | - | - |
| | 240 | - | - | - | - |
| | 250 | - | - | - | - |
| | 300 | - | ■ | - | - |
| | 360 | - | - | - | - |
| | 380 | - | - | - | - |
| | 400 | ■ | ■ | ■ | - |
| | 500 | ■ | ■ | ■ | ■ |
| | 600 | - | ■ | ■ | ■ |
| | 700 | - | ■ | ■ | - |
| 700 | 200 | - | - | - | - |
| | 240 | - | - | - | - |
| | 250 | - | - | - | - |
| | 300 | - | - | - | - |
| | 360 | - | - | - | - |
| | 380 | - | - | - | - |
| | 400 | - | ■ | - | - |
| | 500 | - | ■ | ■ | - |
| | 600 | - | ■ | ■ | - |
| | 700 | - | - | ■ | ■ |
| 760 | 200 | - | - | - | - |
| | 240 | - | - | - | - |
| | 250 | - | - | - | - |
| | 300 | - | - | - | - |
| | 360 | - | - | - | - |
| | 380 | - | - | - | - |
| | 400 | - | - | - | - |
| | 500 | - | - | - | - |
| | 600 | - | ■ | ■ | - |
| | 700 | - | - | - | - |
| 800 | - | - | ■ | ■ | |

| Height | Width | Depth | | | |
|--------|-------|-------|-----|-----|-----|
| | | 150 | 210 | 300 | 400 |
| 800 | 200 | - | - | - | - |
| | 240 | - | - | - | - |
| | 250 | - | - | - | - |
| | 300 | - | - | - | - |
| | 360 | - | - | - | - |
| | 380 | - | - | - | - |
| | 400 | - | ■ | ■ | - |
| | 500 | - | ■ | ■ | ■ |
| | 600 | - | ■ | ■ | ■ |
| | 700 | - | - | - | - |
| 1000 | 200 | - | - | - | - |
| | 240 | - | - | - | - |
| | 250 | - | - | - | - |
| | 300 | - | - | - | - |
| | 360 | - | - | - | - |
| | 380 | - | - | - | - |
| | 400 | - | - | - | - |
| | 500 | - | - | ■ | - |
| | 600 | - | - | ■ | ■ |
| | 700 | - | - | - | - |
| 1200 | 200 | - | - | - | - |
| | 240 | - | - | - | - |
| | 250 | - | - | - | - |
| | 300 | - | - | - | - |
| | 360 | - | - | - | - |
| | 380 | - | - | - | - |
| | 400 | - | - | - | - |
| | 500 | - | - | - | - |
| | 600 | - | - | ■ | ■ |
| | 700 | - | - | ■ | ■ |
| 1400 | 200 | - | - | - | - |
| | 240 | - | - | - | - |
| | 250 | - | - | - | - |
| | 300 | - | - | - | - |
| | 360 | - | - | - | - |
| | 380 | - | - | - | - |
| | 400 | - | - | - | - |
| | 500 | - | - | - | - |
| | 600 | - | - | ■ | ■ |
| | 700 | - | - | - | - |
| 800 | - | - | ■ | ■ | |

Wall Mounted Enclosures
 Steel Range | Stainless Steel
 Double door | ADR

| Height | Width | Depth | | |
|--------|-------|-------|-----|-----|
| | | 210 | 260 | 300 |
| 600 | 800 | ■ | ■ | ■ |
| | 1000 | ■ | ■ | ■ |
| | 1200 | - | ■ | - |
| 760 | 800 | - | - | - |
| | 1000 | ■ | ■ | ■ |
| | 1200 | - | - | - |
| 800 | 800 | - | - | - |
| | 1000 | - | ■ | ■ |
| | 1200 | - | ■ | ■ |
| 1000 | 800 | - | - | - |
| | 1000 | - | ■ | ■ |
| | 1200 | - | ■ | ■ |
| 1200 | 800 | - | - | - |
| | 1000 | - | ■ | ■ |
| | 1200 | - | ■ | ■ |



Terminal Boxes
Steel Range
Mild steel terminal box | STB

| Height | Width | Depth | | | | |
|--------|-------|-------|-----|-----|-----|-----|
| | | 80 | 100 | 120 | 150 | 200 |
| 150 | 150 | ■ | ■ | ■ | - | - |
| | 200 | - | ■ | - | - | - |
| | 300 | ■ | - | ■ | - | - |
| | 400 | - | - | - | - | - |
| | 500 | - | - | - | - | - |
| | 600 | - | - | - | - | - |
| | 800 | - | - | - | - | - |
| 200 | 150 | - | - | - | - | - |
| | 200 | ■ | - | ■ | ■ | - |
| | 300 | ■ | - | ■ | ■ | - |
| | 400 | ■ | - | ■ | ■ | - |
| | 500 | - | - | ■ | - | - |
| | 600 | - | - | ■ | - | - |
| | 800 | - | - | ■ | - | - |
| 300 | 150 | - | - | - | - | - |
| | 200 | - | - | - | - | - |
| | 300 | ■ | - | ■ | ■ | - |
| | 400 | - | - | ■ | ■ | - |
| | 500 | - | - | ■ | ■ | - |
| | 600 | - | - | ■ | ■ | - |
| | 800 | - | - | ■ | ■ | - |
| 400 | 150 | - | - | - | - | - |
| | 200 | - | - | - | - | - |
| | 300 | - | - | - | - | - |
| | 400 | - | - | ■ | ■ | ■ |
| | 500 | - | - | - | ■ | ■ |
| | 600 | - | - | ■ | ■ | ■ |
| | 800 | - | - | ■ | ■ | ■ |



Terminal Boxes
Steel Range
Stainless steel terminal box | SSTB

| Height | Width | Depth | | | | |
|--------|-------|-------|-----|-----|-----|-----|
| | | 80 | 100 | 120 | 150 | 200 |
| 150 | 150 | ■ | ■ | ■ | - | - |
| | 200 | - | ■ | - | - | - |
| | 300 | ■ | - | ■ | - | - |
| | 400 | - | - | - | - | - |
| | 500 | - | - | - | - | - |
| | 600 | - | - | - | - | - |
| | 800 | - | - | - | - | - |
| 200 | 150 | - | - | - | - | - |
| | 200 | ■ | - | ■ | ■ | - |
| | 300 | ■ | - | ■ | ■ | - |
| | 400 | ■ | - | ■ | ■ | - |
| | 500 | - | - | ■ | - | - |
| | 600 | - | - | ■ | - | - |
| | 800 | - | - | ■ | - | - |
| 300 | 150 | - | - | - | - | - |
| | 200 | - | - | - | - | - |
| | 300 | ■ | - | ■ | ■ | - |
| | 400 | - | - | ■ | ■ | - |
| | 500 | - | - | ■ | ■ | - |
| | 600 | - | - | ■ | ■ | - |
| | 800 | - | - | ■ | ■ | - |
| 400 | 150 | - | - | - | - | - |
| | 200 | - | - | - | - | - |
| | 300 | - | - | - | - | - |
| | 400 | - | - | ■ | ■ | ■ |
| | 500 | - | - | - | ■ | ■ |
| | 600 | - | - | ■ | ■ | ■ |
| | 800 | - | - | ■ | ■ | ■ |



Our powerful portfolio of brands:

CADDY

ERICO

HOFFMAN

RAYCHEM

SCHROFF

TRACER



eldon.com
HOFFMAN.nVent.com

©2020 nVent. All nVent marks and logos are owned or licensed by nVent Services GmbH or its affiliates. All other trademarks are the property of their respective owners. nVent reserves the right to change specifications without notice. Advanced Customization Type 1, 1.0.

Distributed by Gross Automation | +1 (262) 252-1600 | sales@grossautomation.com