

# Your Total Solution Provider



Improving Product Efficiency, Saving Energy,  
Comfortable Working Environment

All Solutions in LS ELECTRIC

**FUTURING SMART ENERGY**  
We open up a brighter future through efficient and convenient energy solutions.

## Global Network

- **Holding Companies**  
Shanghai (China), Chicago (US)
- **Production Subsidiaries**  
Dalian, Wuxi, Lishui (China), Hanoi (Vietnam), Jakarta, Banten (Indonesia), Charlotte, Enoch (US), Istanbul (Türkiye)
- **Sales Subsidiaries**  
Hoofddorp (Netherlands), Madrid (Spain), Istanbul (Türkiye), Dubai (UAE), Tokyo (Japan), Chicago (US), Jakarta (Indonesia)

- **R&D Centers**  
Wuxi, Lishui (China)
- **Branches**  
Shanghai, Beijing, Guangzhou, Qingdao, Nanjing, Chengdu, Shenyang (China), Tokyo (Japan), Hanoi, Ho Chi Minh (Vietnam), Bangkok (Thailand), Bengaluru (India), Singapore (Singapore), Moscow (Russia), Brescia (Italy), Bastrop, Santa Fe Springs (US)

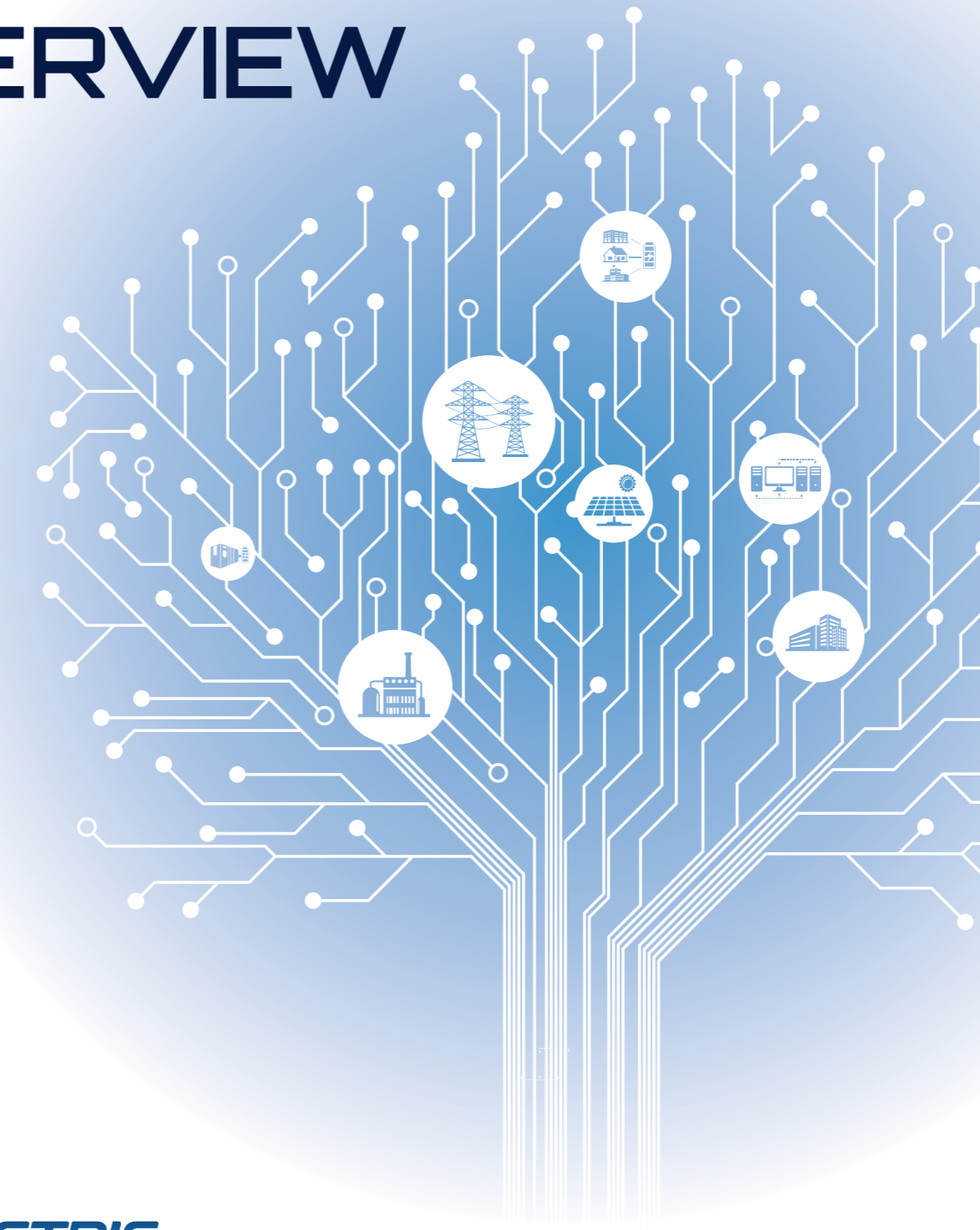
**LS ELECTRIC** www.ls-electric.com

- Headquarter**  
127 LS-ro (Hogye-dong) Dongan-gu, Anyang-si, Gyeonggi-Do, 14119, Korea
- Seoul Office**  
LS Yongsan Tower, 92, Hangang-daero, Yongsan-gu, Seoul, 04386, Korea  
TEL: 82-2-2034-4916, 4684, 4429
- |   |   |   |   |
|---|---|---|---|
| <p><b>China</b><br/>LS ELECTRIC (Dalian) Co., Ltd.<br/>+86-411-8730-5872<br/>china.dalian@lselectric.com.cn</p> <p>LS ELECTRIC (Wuxi) Co., Ltd.<br/>+86-510-6851-6666<br/>china.wuxi@lselectric.com.cn</p> <p>LS ELECTRIC (Lishui) Co., Ltd.<br/>+86-578-6866-780<br/>china.lishui@lselectric.com.cn</p> <p><b>Shanghai Office</b><br/>+86-21-5237-9977<br/>china@lselectric.com.cn</p> <p><b>Beijing Office</b><br/>+86-10-5095-1631<br/>china@lselectric.com.cn</p> <p><b>Guangzhou Office</b><br/>+86-20-3818-2883<br/>china@lselectric.com.cn</p> <p><b>Qingdao Office</b><br/>+86-532-8501-2065<br/>china@lselectric.com.cn</p> <p><b>Chengdu Office</b><br/>+86-28-8670-3201<br/>china@lselectric.com.cn</p> <p><b>Nanjing Office</b><br/>+86-25-84 67-0005<br/>china@lselectric.com.cn</p> | <p><b>India</b><br/><b>India Office</b><br/>+91-80-6142-9108<br/>info_india@ls-electric.com</p> <p><b>Indonesia</b><br/>PT. LS ELECTRIC INDONESIA<br/>+62-21-2933-7614<br/>indonesia@ls-electric.com</p> <p>PT SYMPHOS ELECTRIC<br/>+62-81-1900-1474<br/>marketing@symphos-weltraf.com</p> <p><b>Italy</b><br/><b>Italy Office</b><br/>+39-030-8081-833<br/>italia@ls-electric.com</p> <p><b>Japan</b><br/>LS ELECTRIC Japan Co., Ltd.<br/>+81-3-6268-8241<br/>japan@ls-electric.com</p> <p><b>Tokyo Office</b><br/>+81-3-6268-8241<br/>tokyo@ls-electric.com</p> <p><b>Netherlands</b><br/>LS ELECTRIC Europe B.V.<br/>+31-20-654-1424<br/>europartner@ls-electric.com</p> | <p><b>Russia</b><br/><b>Moscow Office</b><br/>+7-499-682-6130<br/>info@lselectric-ru.com</p> <p><b>Singapore</b><br/><b>Singapore Office</b><br/>+65-6958-8162<br/>singapore@ls-electric.com</p> <p><b>Spain</b><br/>LS ELECTRIC IBERIA S.L.U.<br/>+34-910-28-02-74<br/>iberia@ls-electric.com</p> <p><b>Thailand</b><br/><b>Bangkok Office</b><br/>+66-2-128-0295<br/>thailand@ls-electric.com</p> <p><b>Türkiye</b><br/>LS ELECTRIC Türkiye Co., Ltd.<br/>+90-212-806-1252<br/>turkiye@ls-electric.com</p> <p><b>U.A.E</b><br/>LS ELECTRIC Middle East FZE (Dubai)<br/>+971-4-886-5360<br/>middleeast@ls-electric.com</p> | <p><b>USA</b><br/>LS ELECTRIC America Inc.<br/>+1-800-891-2941<br/>sales.us@lselectricamerica.com</p> <p>LS ENERGY SOLUTIONS LLC<br/>+1-980-221-0554<br/>info@ls-es.com</p> <p>MCM Engineering II<br/>+1-435-865-0125<br/>sales.us@lselectricamerica.com</p> <p><b>America Western Office</b><br/>+1-949-333-3140<br/>america@ls-electric.com</p> <p><b>America Bastrop Campus</b><br/>+1-800-891-2941 EXT 2<br/>power_support.us@lselectricamerica.com</p> <p><b>Vietnam</b><br/>LS ELECTRIC Vietnam Co., Ltd.<br/>+84-222-2221-110<br/>vietnam@ls-electric.com</p> <p><b>Hanoi Office</b><br/>+84-24-6275-8054<br/>vietnam@ls-electric.com</p> <p><b>Ho Chi Minh Office</b><br/>+84-3823-7890<br/>vietnam@ls-electric.com</p> |
|---|---|---|---|

Specifications in this catalog are subject to change without notice due to continuous product development and improvement  
© 2023. 07 LS ELECTRIC Co., Ltd. All rights reserved. / English (04) 2026. 03 PACO STORY



# SOLUTION OVERVIEW



Distributed by Gross Automation | +1 (262) 252-1600 | sales@grossautomation.com



- How can I reduce energy, cost and time?
- How can I increase the work efficiency?
- Is the equipment operating properly?
- Is there a more efficient way to monitor equipment?

# Smart Power Solution

## Photovoltaic System

A system composed of one or more solar panels combined with an inverter and other electrical and mechanical hardware that use energy from the sun to generate electricity.



## High Voltage Direct Current System (HVDC)

HVDC is a highly efficient alternative for transmitting large amounts of electricity over long distances and for special purpose applications.



## Transformer

Transforming voltage and current stably through step-up and step-down of voltage.



## AC Device

Equipment such as Breaker / Relay meter / Gauge for power system protection from low voltage to medium voltage.



## Energy Storage System (ESS)

The ESS is a system that stores power in batteries and enables the use of such stored power when required.



## Flexible AC Transmission System (FACTS)

FACTS consists of power electronics and other static components to increase controllability and power transfer ability of AC grids.



## Modular Substation

Modular type substations can be used for a wide variety of applications including LV / MV / HV packaged substations, local equipment rooms, control rooms, etc.



## DC Device

It is a device such as breaker for power system protection from low voltage to medium voltage. It is used in all fields that need DC grid protection such as Renewable / ESS / Railway system.



## Beyond CARE

It is a solution for LS ELECTRIC's power facility integrated management that provides smart switchboards and top-level S/W for the energy management, the efficiency of facility operation and the maintenance convenience. It also supports the customized integrated service by linking the SCADA and HV diagnosis.



## Gas Insulated Switchgear (GIS)

Protecting power plants and substations from accidents caused by overload, grounding and shorted wire.



## Switchgear

A device composed of circuit breakers and monitoring and control equipment into closed enclosure to monitor the power system and enable protection operation.



## Railway System

Signaling system for reliable and efficient train operation to protect trains and human lives and related facilities from accidents in the event of an emergency during operation.



# Smart Automation Solution

## Programmable Logic Controller (PLC)

A digital controller adapted for the control of manufacturing processes, such as machinery, assembly lines, or any activity that requires high reliability control and ease of programming and process fault diagnosis.



## Human Machine Interface

A software application that presents information to an operator about the state of a process, and to accept and implement the operators control instructions. Typically information is displayed in a graphic format.



## Supervisory Control and Data Acquisition (SCADA)

A control system architecture that uses computers, networked data communications and graphical user interfaces for high-level process supervisory management with other peripheral devices to interface with the process plant or machinery.



## Gearbox

A device connected to a motor shaft delivers reduced speed and increased torque to the load. LS ELECTRIC offers products with various reduction ratios for your applications.



## LV Drive

An energy saving device to control the speed or torque of an electric motor by changing the frequency of the electrical supply to the motor.



## MV Drive

A system for optimum energy saving solution requires a higher input voltage to achieve the higher output voltage for a wide range of applications.



## Servo System

A servo system is an electro mechanical system that can follow a desired position, speed or time in a closed loop fashion. It consists of servo drives, motors and gearboxes.



## Tech Square

An ecosystem platform for online and offline operation to improve the smart factory productivity from building and operation to maintenance.



# LS Solution Overview

