

Commercial Enclosures

Commercial Enclosures

Junction Boxes

	Type 1 Mild Steel Junction Box CSKO Series Screw Cover and w/ Knockouts..... 210		Type 1 Mild Steel 3 Piece Flushmount Enclosure N1W F Series Hinge Door with Quarter Turn..... 219
	Type 1 Mild Steel Junction Box CS Series Screw Cover and without Knockouts..... 211		Type 3R Painted Galvanized Steel Junction Box C3RESCNK Series Screw Cover and without Knockouts..... 222
	Type 1 Unpainted Galvanized Steel Junction Box CSG Series Screw Cover and without Knockouts..... 212		Type 3R Aluminum Junction Box C3RESCNKAL Series Screw Cover and without Knockouts..... 223
	Type 1 Unpainted Galvanized Steel Junction Box CSKOG Series Screw Cover and w/ Knockouts..... 213		Type 3/12/4 Mild Steel Junction Box C3SC Series Heavy Duty Screw Cover 224
	Junction Box Extender Ring - Type 1 CSEXT Series For use with CS/CSKO Series..... 214		Type 4X Stainless Steel Junction Box C4XSC Series Heavy Duty Screw Cover 225
	Flush Covers CSFC Series CS/CSKO Accessory..... 215		Type 3R Painted Galvanized Steel Junction Box C3R SC Series Lift-Off Cover with Screws and w/ Knockouts..... 226
	Type 1 Mild Steel Junction Box CHKO Series Hinge Door with Quarter Turn and w/ Knockouts 216		Type 3R Painted Galvanized Steel Junction Box C3R HCR SM Series Hinge Door with Snap Latch and w/ Knockouts 227
	Type 1 Mild Steel Small Wallmount Enclosure N1J Series Hinge Door with Quarter Turn..... 217		Type 3R Painted Galvanized Steel Enclosure C3R HCL0 Series Lift-Off Hinge Door with Snap Latch 228
	Type 1 Mild Steel Wallmount Enclosure N1A Series Hinge Door with Quarter Turn..... 220		Type 3R Painted Galvanized Steel Wallmount Enclosure C3R HCRMD Series Continuous Hinge Door with Screws 229
	Type 1 Mild Steel Wallmount Enclosure 1420 Series Hinge Door with Quarter Turn and w/ Mounting Flange 221		Type 1 Mild Steel Splitter Box CSB Series Hinged Door with Screw 230
	Type 1 Mild Steel 3 Piece Wallmount Enclosure N1W S Series Hinge Door with Quarter Turn..... 218		Type 4/3R Mild Steel Splitter Box CN4SB Series Hinge Door with Quarter Turn..... 231

Distributed by Gross Automation | +1 (262) 252-1600 | sales@grossautomation.com

Technical references and CAD downloads available at www.hammondmfg.com

All dimensions in inches unless specified otherwise

Commercial Enclosures



Type 4X Stainless Steel Splitter Box
CN4SBSS Series
Hinge Door with Quarter Turn..... 232



Type 1 Mild Steel Component Case
1416 Series
Ventilated Cover with Screws..... 232



Type 1 Mild Steel Splitter Trough
CST Series
Hinged Door with Screw..... 233



Type 4/3R Mild Steel Splitter Trough
CN4ST Series
Hinge Door with Quarter Turn..... 234



Type 4X Stainless Steel Splitter Trough
CN4STSS Series
Hinged Door with Quarter Turn..... 235



Splitter Blocks
CSBL Series..... 236



Grounding Kits
CGK Series..... 236



Type 1 Mild Steel Metering Cabinets
CMC Series
Hinge Door with Quarter Turn..... 237



Type 1 Mild Steel Metering Cabinets (Hydro Quebec
Version)
CMC Q Series
Hinge Door with Quarter Turn..... 238



Type 1 Mild Steel Metering Cabinets (Ontario Hydro
Version)
CMC O Series
Hinge Door with Handle and Viewing Window 239



Type 3R Mild Steel Metering Cabinets
C3RMC Series
Hinge Door with Handle..... 240



Type 3R Current Transformer Cabinet
HCT Series
Single and Double Door Enclosures..... 241

Commercial Enclosures Splitter Boxes

Distributed by Gross Automation | +1 (262) 252-1600 | sales@grossautomation.com

Technical references and CAD downloads available at www.hammondmfg.com

All dimensions in inches unless specified otherwise

Quality Products. Service Excellence.

Type 1 Mild Steel Junction Box *CSKO Series*

Screw Cover and w/ Knockouts

Commercial Enclosures Junction Boxes



Quick Link: hammfg.com/CSKO

Application

- Designed for general purpose indoor commercial use as a junction, pull or switch box.

Standards

- UL-50 Type 1
- CSA Type 1
- Complies with:
 - NEMA Type 1
 - IEC 60529, IP20

Construction

- Formed and spot welded from 16 gauge (up to 30"x24") or 14 gauge (36"x24") steel.
- Flat steel covers fastened with plated steel screws.
- Keyhole slots permit cover to be lifted off without removing screws entirely.
- Easily removed knockouts on all 4 sides (see drawings for sizes and locations).
- Through holes in back for wall mounting.
- Grounding location embossed in body.

Finish

- Enclosure and cover are finished in ANSI 61 gray powder coating.

Accessories

- Flush Covers...See Page **215**

Part No.	Enclosure		
	H	W	D
CSKO443	4.00	4.00	3.00
CSKO663	6.00	6.00	3.00
CSKO863	8.00	6.00	3.00
CSKO16143	16.00	14.00	3.00
CSKO18143	18.00	14.00	3.00
CSKO20143	20.00	14.00	3.00
CSKO444	4.00	4.00	4.00
CSKO644	6.00	4.00	4.00
CSKO664	6.00	6.00	4.00
CSKO864	8.00	6.00	4.00
CSKO884	8.00	8.00	4.00
CSKO1084	10.00	8.00	4.00
CSKO10104	10.00	10.00	4.00
CSKO1284	12.00	8.00	4.00
CSKO12104	12.00	10.00	4.00
CSKO12124	12.00	12.00	4.00
CSKO16124	16.00	12.00	4.00
CSKO18124	18.00	12.00	4.00
CSKO18184	18.00	18.00	4.00
CSKO24244	24.00	24.00	4.00
CSKO666	6.00	6.00	6.00
CSKO886	8.00	8.00	6.00
CSKO1086	10.00	8.00	6.00
CSKO10106	10.00	10.00	6.00
CSKO12106	12.00	10.00	6.00
CSKO12126	12.00	12.00	6.00
CSKO16126	16.00	12.00	6.00
CSKO16166	16.00	16.00	6.00
CSKO18126	18.00	12.00	6.00
CSKO18186	18.00	18.00	6.00
CSKO24186	24.00	18.00	6.00
CSKO24246	24.00	24.00	6.00
CSKO30246	30.00	24.00	6.00
CSKO36246	36.00	24.00	6.00
CSKO12128	12.00	12.00	8.00
CSKO16168	16.00	16.00	8.00
CSKO24248	24.00	24.00	8.00
CSKO202010	20.00	20.00	10.00
CSKO242410	24.00	24.00	10.00
CSKO302010	30.00	20.00	10.00
CSKO362410	36.00	24.00	10.00

Distributed by Gross Automation | +1 (262) 252-1600 | sales@grossautomation.com

Technical references and CAD downloads available at www.hammondmfg.com

All dimensions in inches unless specified otherwise

Type 1 Mild Steel Junction Box *CS Series*

Screw Cover and without Knockouts



Quick Link: hammfg.com/CS

Application

- Designed for general purpose indoor commercial use as a junction, pull or switch box.

Standards

- UL-50 Type 1
- CSA Type 1
- Complies with
 - NEMA Type 1
 - IEC 60529, IP20

Construction

- Formed and spot welded from 16 gauge (up to 30"x24"), 14 gauge (36"x24") or 12 gauge (36"x36") steel.
- Flat steel covers fastened with plated steel screws.
- Keyhole slots permit cover to be lifted off without removing screws entirely.
- Through holes in back for wall mounting.
- Grounding location embossed in body.

Finish

- Enclosure and cover are finished in ANSI 61 gray powder coating.

Accessories

- Flush Covers...*See Page 215*

Part No.	Enclosure		
	H	W	D
CS443	4.00	4.00	3.00
CS663	6.00	6.00	3.00
CS863	8.00	6.00	3.00
CS16143	16.00	14.00	3.00
CS18143	18.00	14.00	3.00
CS20143	20.00	14.00	3.00
CS444	4.00	4.00	4.00
CS644	6.00	4.00	4.00
CS664	6.00	6.00	4.00
CS864	8.00	6.00	4.00
CS884	8.00	8.00	4.00
CS1084	10.00	8.00	4.00
CS10104	10.00	10.00	4.00
CS1284	12.00	8.00	4.00
CS12104	12.00	10.00	4.00
CS12124	12.00	12.00	4.00
CS16124	16.00	12.00	4.00
CS18124	18.00	12.00	4.00
CS18184	18.00	18.00	4.00
CS24244	24.00	24.00	4.00
CS666	6.00	6.00	6.00
CS886	8.00	8.00	6.00
CS1086	10.00	8.00	6.00
CS10106	10.00	10.00	6.00
CS12106	12.00	10.00	6.00
CS12126	12.00	12.00	6.00
CS16126	16.00	12.00	6.00
CS16166	16.00	16.00	6.00
CS18126	18.00	12.00	6.00
CS18186	18.00	18.00	6.00
CS24186	24.00	18.00	6.00
CS24246	24.00	24.00	6.00
CS30246	30.00	24.00	6.00
CS36246	36.00	24.00	6.00
CS36366	36.00	36.00	6.00
CS12128	12.00	12.00	8.00
CS16168	16.00	16.00	8.00
CS18188	18.00	18.00	8.00
CS24248	24.00	24.00	8.00
CS36248	36.00	24.00	8.00
CS202010	20.00	20.00	10.00
CS242410	24.00	24.00	10.00
CS302010	30.00	20.00	10.00
CS362410	36.00	24.00	10.00
CS363612	36.00	36.00	12.00

Distributed by Gross Automation | +1 (262) 252-1600 | sales@grossautomation.com

Technical references and CAD downloads available at www.hammondmfg.com

All dimensions in inches unless specified otherwise

Quality Products. Service Excellence.

Type 1 Unpainted Galvanized Steel Junction Box *CSG Series*

Screw Cover and without Knockouts

Commercial Enclosures Junction Boxes


Quick Link: hammfg.com/CSG

Application

- Designed for general purpose indoor commercial use as a junction, pull or switch box.

Standards

- UL-50 Type 1
- CSA Type 1
- Complies with
 - NEMA Type 1
 - IEC 60529, IP20

Construction

- Formed and spot welded from 16 gauge (up to 30"x24"), 14 gauge (36"x24") or 12 gauge (36"x36") G90 steel.
- Flat steel covers fastened with plated steel screws.
- Keyhole slots permit cover to be lifted off without removing screws entirely.
- Through holes in back for wall mounting.
- Grounding location embossed in body.

Finish

- Enclosure and cover are unpainted galvanized steel.

Part No.	Enclosure		
	H	W	D
CSG664	6.00	6.00	4.00
CSG884	8.00	8.00	4.00
CSG10104	10.00	10.00	4.00
CSG12124	12.00	12.00	4.00
CSG18184	18.00	18.00	4.00
CSG24244	24.00	24.00	4.00
CSG666	6.00	6.00	6.00
CSG886	8.00	8.00	6.00
CSG10106	10.00	10.00	6.00
CSG12106	12.00	10.00	6.00
CSG12126	12.00	12.00	6.00
CSG16166	16.00	16.00	6.00
CSG18126	18.00	12.00	6.00
CSG18186	18.00	18.00	6.00
CSG24246	24.00	24.00	6.00
CSG30306	30.00	30.00	6.00
CSG36366	36.00	36.00	6.00
CSG12128	12.00	12.00	8.00
CSG18188	18.00	18.00	8.00
CSG24248	24.00	24.00	8.00
CSG30308	30.00	30.00	8.00
CSG36368	36.00	36.00	8.00
CSG181812	18.00	18.00	12.00
CSG242412	24.00	24.00	12.00
CSG303012	30.00	30.00	12.00
CSG363612	36.00	36.00	12.00
CSG484812	48.00	48.00	12.00
CSG363616	36.00	36.00	16.00
CSG484816	48.00	48.00	16.00

Distributed by Gross Automation | +1 (262) 252-1600 | sales@grossautomation.com

Technical references and CAD downloads available at www.hammondmfg.com

All dimensions in inches unless specified otherwise

Type 1 Unpainted Galvanized Steel Junction Box *CSKOG Series*

Screw Cover and w/ Knockouts



Part No.	Enclosure		
	H	W	D
CSKOG664	6.00	6.00	4.00
CSKOG884	8.00	8.00	4.00
CSKOG10104	10.00	10.00	4.00
CSKOG12124	12.00	12.00	4.00
CSKOG18124	18.00	12.00	4.00
CSKOG666	6.00	6.00	6.00
CSKOG886	8.00	8.00	6.00
CSKOG10106	10.00	10.00	6.00
CSKOG12126	12.00	12.00	6.00
CSKOG16166	16.00	16.00	6.00
CSKOG16168	16.00	16.00	8.00
CSKOG12128	12.00	12.00	8.00

Quick Link: hammfg.com/CSKOG

Application

- Designed for general purpose indoor commercial use as a junction, pull or switch box.

Standards

- UL-50 Type 1
- CSA Type 1
- Complies with:
 - NEMA Type 1
 - IEC 60529, IP20

Construction

- Formed and spot welded from 16 gauge G90 steel.
- Flat steel covers fastened with plated steel screws.
- Keyhole slots permit cover to be lifted off without removing screws entirely.
- Easily removed knockouts on all 4 sides (see drawings for sizes and locations).
- Through holes in back for wall mounting.
- Grounding location embossed in body.

Finish

- Enclosure and cover are unpainted galvanized steel.

Distributed by Gross Automation | +1 (262) 252-1600 | sales@grossautomation.com

Technical references and CAD downloads available at www.hammondmfg.com

All dimensions in inches unless specified otherwise

Quality Products. Service Excellence.

Junction Box Extender Ring - Type 1 *CSEXT Series*

For use with CS/CSKO Series



Mild Steel (GY) Part No.	Unpainted Galv Part No.	Extender Ring		
		H	W	D
CS66EXT4	CSG66EXT4	6.00	6.00	4.00
CS88EXT4	CSG88EXT4	8.00	8.00	4.00
CS1010EXT4	CSG1010EXT4	10.00	10.00	4.00
CS1212EXT4	CSG1212EXT4	12.00	12.00	4.00
CS1212EXT6		12.00	12.00	6.00
CS1616EXT6		16.00	16.00	6.00

Commercial Enclosures Junction Boxes

Quick Link: hammfg.com/CSEXT

- Provides extra depth to Type 1 screw cover junction boxes - for use with CS, CSG, CSKO, CSKOG Series.
- Keyhole shaped mounting holes for quick assembly.
- Easy install - Remove box cover, fix extender ring using cover screws, and attach cover to extender ring with hardware provided.
- Painted steel (ANSI 61 gray) and unpainted galvanized versions available.

Distributed by Gross Automation | +1 (262) 252-1600 | sales@grossautomation.com

Technical references and CAD downloads available at www.hammondmfg.com

All dimensions in inches unless specified otherwise

Flush Covers *CSFC Series*

CS/CSKO Accessory



Part No.	Actual Size		Fits Box Size		Cover Gauge
	L	W	H	W	
CSFC66	7.50	7.50	6.00	6.00	16
CSFC86	9.50	7.50	8.00	6.00	16
CSFC88	9.50	9.50	8.00	8.00	16
CSFC108	11.50	9.50	10.00	8.00	16
CSFC1010	11.50	11.50	10.00	10.00	16
CSFC128	13.50	9.50	12.00	8.00	16
CSFC1212	13.50	13.50	12.00	12.00	16
CSFC1616	17.50	17.50	16.00	16.00	16
CSFC1812	19.50	13.50	18.00	12.00	16
CSFC1818	19.50	19.50	18.00	18.00	16
CSFC2418	25.50	19.50	24.00	18.00	14
CSFC2424	25.50	25.50	24.00	24.00	14

Quick Link: hammfg.com/CSFC

Features

- Oversized covers for CS/CSKO Series screw cover junction boxes
- Designed for flush mount installation requirements
- 1.5" taller and wider than standard covers
- Constructed of 16 or 14 gauge steel
- Painted ANSI 61 gray
- Note - Boxes sold separately

Distributed by Gross Automation | +1 (262) 252-1600 | sales@grossautomation.com

Technical references and CAD downloads available at www.hammondmfg.com

All dimensions in inches unless specified otherwise

Quality Products. Service Excellence.

Type 1 Mild Steel Junction Box *CHKO Series*

Hinge Door with Quarter Turn and w/ Knockouts



Part No.	Enclosure		
	H	W	D
CHKO663	6.00	6.00	3.50
CHKO644	6.00	4.00	4.00
CHKO664	6.00	6.00	4.00
CHKO864	8.00	6.00	4.00
CHKO884	8.00	8.00	4.00
CHKO1084	10.00	8.00	4.00
CHKO10104	10.00	10.00	4.00
CHKO1284	12.00	8.00	4.00
CHKO12104	12.00	10.00	4.00
CHKO12124	12.00	12.00	4.00
CHKO16124	16.00	12.00	4.00
CHKO18124	18.00	12.00	4.00
CHKO666	6.00	6.00	6.00
CHKO886	8.00	8.00	6.00
CHKO1086	10.00	8.00	6.00
CHKO10106	10.00	10.00	6.00
CHKO12106	12.00	10.00	6.00
CHKO12126	12.00	12.00	6.00
CHKO16126	16.00	12.00	6.00
CHKO16166	16.00	16.00	6.00
CHKO18126	18.00	12.00	6.00
CHKO18186	18.00	18.00	6.00
CHKO24186	24.00	18.00	6.00
CHKO24246	24.00	24.00	6.00
CHKO30246	30.00	24.00	6.00
CHKO36246	36.00	24.00	6.00
CHKO36248	36.00	24.00	8.00

Quick Link: hammfg.com/CHKO

Application

- Designed for general purpose indoor commercial use as a junction, pull or switch box.
- Hinged cover with latch provides easy access during installation and maintenance.

Standards

- UL-50 Type 1
- CSA Type 1
- Complies with
 - NEMA Type 1
 - IEC 60529, IP20

Construction

- Formed and spot welded from 16 gauge (up to 30"x24") or 14 gauge (36"x24") steel.
- Formed steel covers close by use of slotted quarter turn latch.
- Full swing, hinged door. Easily removed knockouts on all 4 sides (see drawings for sizes and locations).
- Through holes in back for wall mounting.
- Grounding location embossed in body.

Finish

- Enclosure and cover are finished in ANSI 61 gray powder coating.

Accessories

- Type 1 Lock Kit...*See Page 284*

Distributed by Gross Automation | +1 (262) 252-1600 | sales@grossautomation.com

Technical references and CAD downloads available at www.hammondmfg.com

All dimensions in inches unless specified otherwise

Type 1 Mild Steel Small Wallmount Enclosure *N1J Series*

Hinge Door with Quarter Turn



Quick Link: hammfg.com/N1J

Application

- Designed for indoor use to house controls, instruments and components not requiring oil-tight or dust-tight protection.

Standards

- UL-50 Type 1
- CSA Type 1
- Complies with
 - NEMA Type 1
 - IEC 60529, IP20

Construction

- Formed and spot welded from 16 gauge steel.
- Formed steel covers close by use of slotted quarter turn latch.
- Full swing door using butt hinges.
- Through holes in back for wall mounting.
- Bonding stud is provided on the door and a grounding stud is provided on the box.
- Includes 14 gauge steel inner panel.

Finish

- Enclosure and cover are finished in ANSI 61 gray powder coating.
- Inner panel is finished in white powder coating

Accessories

- Additional Inner Panels...*See Page 298*
- Perforated Inner Panels...*See Page 301*
- Type 1 Lock Kit...*See Page 284*

Part No.	Enclosure			Inner Panel	
	H	W	D	H	W
N1J664	6.00	6.00	4.00	4.25	4.25
N1J864	8.00	6.00	4.00	6.25	4.25
N1J884	8.00	8.00	4.00	6.25	6.25
N1J1084	10.00	8.00	4.00	8.25	6.25
N1J10104	10.00	10.00	4.00	8.25	8.25
N1J12104	12.00	10.00	4.00	10.25	8.25
N1J12124	12.00	12.00	4.00	10.25	10.25
N1J14124	14.00	12.00	4.00	12.25	10.25
N1J886	8.00	8.00	6.00	6.25	6.25
N1J1086	10.00	8.00	6.00	8.25	6.25
N1J10106	10.00	10.00	6.00	8.25	8.25
N1J12106	12.00	10.00	6.00	10.25	8.25
N1J12126	12.00	12.00	6.00	10.25	10.25
N1J14126	14.00	12.00	6.00	12.25	10.25
N1J16126	16.00	12.00	6.00	14.25	10.25
N1J20126	20.00	12.00	6.00	18.25	10.25
N1J12128	12.00	12.00	8.00	10.25	10.25
N1J14128	14.00	12.00	8.00	12.25	10.25

Distributed by Gross Automation | +1 (262) 252-1600 | sales@grossautomation.com

Technical references and CAD downloads available at www.hammondmfg.com

All dimensions in inches unless specified otherwise

Quality Products. Service Excellence.

Type 1 Mild Steel 3 Piece Wallmount Enclosure *N1W S Series*

Hinge Door with Quarter Turn



Quick Link: hammfg.com/N1WS

Application

- Designed for indoor use to enclose controls, instruments, and components which do not require oil-tight or dust-tight protection.
- Ideal for applications where components may be easily mounted and wired prior to installation of wrapper and door.

Standards

- UL 50 Type 1
- CSA Type 1
- Complies with
 - NEMA Type 1
 - IEC 60529, IP20

Construction

- Three piece assembly consisting of a base, wrapper, and door.
- Components are attached and secured with metal screws.
- 14 gauge reverse formed base acts as mounting surface (no separate inner panel) and provides clearance for mounting hardware.
- Wrapper is available in three depths: 4", 6", and 8".
- Wrapper is formed from 16 gauge steel, with no knock-outs in the sides.
- Door assembly formed from 16 gauge steel.
- Removable door is mounted on slip hinges.
- A bonding stud is provided on the door and a grounding screw is provided for the enclosure.
- Door is fastened with a slotted quarter turn latch.

Finish

- Base, wrapper and door are finished in ANSI 61 gray powder coating.

Accessories

- Type 1 Lock Kit...*See Page 284*
- Padlock Adaptor...*See Page 286*

Part No.	Enclosure		
	H	W	D
N1WS864	8.00	6.00	4.00
N1WS1084	10.00	8.00	4.00
N1WS12104	12.00	10.00	4.00
N1WS16124	16.00	12.00	4.00
N1WS20164	20.00	16.00	4.00
N1WS24204	24.00	20.00	4.00
N1WS866	8.00	6.00	6.00
N1WS1086	10.00	8.00	6.00
N1WS12106	12.00	10.00	6.00
N1WS16126	16.00	12.00	6.00
N1WS20166	20.00	16.00	6.00
N1WS24206	24.00	20.00	6.00
N1WS868	8.00	6.00	8.00
N1WS1088	10.00	8.00	8.00
N1WS12108	12.00	10.00	8.00
N1WS16128	16.00	12.00	8.00
N1WS20168	20.00	16.00	8.00
N1WS24208	24.00	20.00	8.00

Distributed by Gross Automation | +1 (262) 252-1600 | sales@grossautomation.com

Technical references and CAD downloads available at www.hammondmfg.com

All dimensions in inches unless specified otherwise

Type 1 Mild Steel 3 Piece Flushmount Enclosure *N1WF Series*

Hinge Door with Quarter Turn



Quick Link: hammfg.com/N1WF

Application

- Designed for indoor use to enclose controls, instruments, and components which do not require oil-tight or dust-tight protection.
- Ideal for applications where components may be easily mounted and wired prior to installation of wrapper and door.

Standards

- UL 50 Type 1
- CSA Type 1
- Complies with
 - NEMA Type 1
 - IEC 60529, IP20

Construction

- Three piece assembly consisting of a base, wrapper, and door.
- Components are attached and secured with metal screws.
- 14 gauge reverse formed base acts as mounting surface (no separate inner panel) and provides clearance for mounting hardware.
- Punched for left or right hinging of the door and ease of assembly.
- Wrapper is formed from 16 gauge steel, with no knock-outs in the sides.
- Flush mounting door assembly formed from 16 gauge steel.
- Door is fastened with a slotted quarter turn latch.
- A bonding stud is provided on the door and a grounding screw is provided for the enclosure.

Finish

- Base, wrapper and door are finished in ANSI 61 gray powder coating.

Accessories

- Type 1 Lock Kit...*See Page 284*
- Padlock Adaptor...*See Page 286*

Part No.	Enclosure		
	H	W	D
N1WF864	8.00	6.00	4.00
N1WF1084	10.00	8.00	4.00
N1WF12104	12.00	10.00	4.00
N1WF16124	16.00	12.00	4.00
N1WF20164	20.00	16.00	4.00
N1WF24204	24.00	20.00	4.00

Commercial Enclosures Panel Enclosures

Distributed by Cross Automation | +1 (262) 252-1600 | sales@grossautomation.com

Technical references and CAD downloads available at www.hammondmfg.com

All dimensions in inches unless specified otherwise

Quality Products. Service Excellence.

Type 1 Mild Steel Wallmount Enclosure *N1A Series*

Hinge Door with Quarter Turn

Commercial Enclosures Panel Enclosures



Quick Link: hammfg.com/N1A

Application

- Designed for indoor use to house controls, instruments and components not requiring oil-tight or dust-tight protection.

Standards

- UL 50 Type 1
- CSA Type 1
- Complies with
 - NEMA Type 1
 - IEC 60529, IP20

Construction

- Enclosure is formed and spot welded from 12 or 14 gauge steel.
- Removable 12 or 14 gauge inner panel is mounted in the rear of the enclosure on collar studs.
- Removable door is mounted on slip hinges.
- Door is fastened with a slotted quarter turn latch; doors 30" and higher are provided with two latches.
- A bonding stud is provided on the door and a grounding stud is provided in the box.
- Mounting holes are provided in the rear of the enclosure.
- Piano hinge on 12 gauge units.

Finish

- Enclosure and door are finished in ANSI 61 gray powder coating.
- Inner panel is finished in white powder coating.

Accessories

- Additional Inner Panels...*See Page 299*
- Perforated Inner Panels...*See Page 301*
- Type 1 Lock Kit...*See Page 284*
- Ventilation...*See Page 272*
- Window Kits...*See Page 308*
- Padlock Adaptor...*See Page 286*

Part No.	Enclosure			Inner Panel	
	H	W	D	H	W
N1A16127	16.00	12.00	7.00	13.00	10.50
N1A16167	16.00	16.00	7.00	13.00	14.50
N1A16207	16.00	20.00	7.00	13.00	18.50
N1A20167	20.00	16.00	7.00	17.00	14.50
N1A20207	20.00	20.00	7.00	17.00	18.50
N1A24167	24.00	16.00	7.00	21.00	14.50
N1A24207	24.00	20.00	7.00	21.00	18.50
N1A24247	24.00	24.00	7.00	21.00	22.50
N1A30207	30.00	20.00	7.00	26.00	18.50
N1A30247	30.00	24.00	7.00	26.00	22.50
N1A36247	36.00	24.00	7.00	32.00	22.50
N1A36307	36.00	30.00	7.00	32.00	28.50
N1A16129	16.00	12.00	9.00	13.00	10.50
N1A20169	20.00	16.00	9.00	17.00	14.50
N1A20209	20.00	20.00	9.00	17.00	18.50
N1A20249	20.00	24.00	9.00	17.00	22.50
N1A24209	24.00	20.00	9.00	21.00	18.50
N1A24249	24.00	24.00	9.00	21.00	22.50
N1A30209	30.00	20.00	9.00	26.00	18.50
N1A30249	30.00	24.00	9.00	26.00	22.50
N1A30309	30.00	30.00	9.00	26.00	28.50
N1A36249	36.00	24.00	9.00	32.00	22.50
N1A36309	36.00	30.00	9.00	32.00	28.50
N1A42249	42.00	24.00	9.00	38.00	22.50
N1A242012	24.00	20.00	12.00	21.00	18.50
N1A242412	24.00	24.00	12.00	21.00	22.50
N1A302412	30.00	24.00	12.00	26.00	22.50
N1A363012	36.00	30.00	12.00	32.00	28.50
N1A423012 ¹	42.00	30.00	12.00	38.00	28.50
N1A423612 ¹	42.00	36.00	12.00	38.00	34.50
N1A483612 ¹	48.00	36.00	12.00	44.00	34.50

¹12 gauge construction

Distributed by Gross Automation | +1 (262) 252-1600 | sales@grossautomation.com

Technical references and CAD downloads available at www.hammondmfg.com

All dimensions in inches unless specified otherwise

Type 1 Mild Steel Wallmount Enclosure *1420 Series*

Hinge Door with Quarter Turn and w/ Mounting Flange



Quick Link: hammfg.com/1420

Application

- Designed for indoor use to house controls, instruments and components which do not require oil-tight or dust-tight protection.

Standards

- UL 508A Type 1
- CSA Type 1
- Complies with
 - NEMA Type 1
 - IEC 60529, IP20

Construction

- Enclosure is formed and spot welded from 12 or 14 gauge steel.
- Removable 12 gauge inner panel is mounted to the rear of the enclosure on collar studs.
- Removable door is attached with slip hinges.
- To remove door, a tool is required to remove the #8 screw which captivates hinge.
- Door is fastened with a slotted 1/4 turn latch; doors 30" and higher are provided with two latches.
- A bonding stud is provided on the door and a grounding stud is provided in the box.
- Piano hinge on 12 gauge units.

Finish

- Enclosure and door are finished in ANSI 61 gray powder coating.
- Inner panel is finished in white powder coating.

Accessories

- Additional Inner Panels...*See Page 297*
- Type 1 Lock Kit...*See Page 284*
- Ventilation...*See Page 272*
- Window Kits...*See Page 308*
- Padlock Adaptor...*See Page 286*

Part No.	Enclosure			Inner Panel	
	H	W	D	H	W
1420B7	16.00	12.00	7.00	14.00	10.00
1420C7	20.00	16.00	7.00	18.00	14.00
1420D7	20.00	20.00	7.00	18.00	18.00
1420E7	24.00	20.00	7.00	22.00	18.00
1420F7	30.00	20.00	7.00	28.00	18.00
1420G7	30.00	24.00	7.00	28.00	22.00
1420H7	36.00	24.00	7.00	34.00	22.00
1420E9	24.00	20.00	9.00	22.00	18.00
1420EM9	24.00	24.00	9.00	22.00	22.00
1420G9	30.00	24.00	9.00	28.00	22.00
1420H9	36.00	24.00	9.00	34.00	22.00
1420P9 ¹	36.00	30.00	9.00	34.00	28.00
1420Q9	42.00	24.00	9.00	40.00	22.00
1420G12	30.00	24.00	12.00	28.00	22.00
1420P12 ¹	36.00	30.00	12.00	34.00	28.00
1420R12 ¹	42.00	30.00	12.00	40.00	28.00
1420S12 ¹	42.00	36.00	12.00	40.00	34.00
1420T12 ¹	48.00	36.00	12.00	46.00	34.00
1420G16	30.00	24.00	16.00	28.00	22.00
1420P16 ¹	36.00	30.00	16.00	34.00	28.00

¹12 gauge construction

Distributed by Gross Automation | +1 (262) 252-1600 | sales@grossautomation.com

Technical references and CAD downloads available at www.hammondmfg.com

All dimensions in inches unless specified otherwise

Type 3R Painted Galvanized Steel Junction Box *C3RESCNK Series*

Screw Cover and without Knockouts



Part No.	Enclosure		
	H	W	D
C3R664ESCNK	6.00	6.00	4.00
C3R884ESCNK	8.00	8.00	4.00
C3R886ESCNK	8.00	8.00	6.00
C3R10104ESCNK	10.00	10.00	4.00
C3R10106ESCNK	10.00	10.00	6.00
C3R12124ESCNK	12.00	12.00	4.00
C3R12126ESCNK	12.00	12.00	6.00
C3R16166ESCNK	16.00	16.00	6.00
C3R18186ESCNK	18.00	18.00	6.00
C3R24246ESCNK	24.00	24.00	6.00

Quick Link: hammfg.com/C3RESCNK

Application

- Designed for use as a wiring/junction box.
- Provides protection against rain, sleet, snow and dripping water.

Standards

- UL-50 Type 3R
- CSA Type 3R
- Complies with:
 - NEMA Type 3R
 - IEC 60529, IP24

Construction

- Formed and spot welded from 16 gauge galvanized steel (24x24x6 is 14 gauge).
- Drip-shield top and seam-free sides, front and back.
- Slip-on removable cover fastened with plated steel screws.
- External mounting feet
- Oil resistant gaskets are permanently secured
- A bonding stud is provided on the door and a grounding stud is provided in the box.

Finish

- Enclosure and cover are finished in ANSI 61 gray powder coating.

Commercial Enclosures
Junction Boxes

Distributed by Gross Automation | +1 (262) 252-1600 | sales@grossautomation.com

Technical references and CAD downloads available at www.hammondmfg.com

All dimensions in inches unless specified otherwise

Type 3R Aluminum Junction Box *C3RESCNKAL Series*

Screw Cover and without Knockouts



Part No.	Enclosure		
	H	W	D
C3R664ESCNKAL	6.00	6.00	4.00
C3R884ESCNKAL	8.00	8.00	4.00
C3R886ESCNKAL	8.00	8.00	6.00
C3R10104ESCNKAL	10.00	10.00	4.00
C3R10106ESCNKAL	10.00	10.00	6.00
C3R12124ESCNKAL	12.00	12.00	4.00
C3R12126ESCNKAL	12.00	12.00	6.00

Quick Link: hammfg.com/C3RESCNKAL

Application

- Designed for use as a wiring/junction box.
- Provides protection against rain, sleet, snow and dripping water.

Standards

- UL-50 Type 3R
- CSA Type 3R
- Complies with:
 - NEMA Type 3R
 - IEC 60529, IP24

Construction

- Formed from 0.08" Type 5052 H-32 aluminum
- Drip-shield top and seam-free sides, front and back.
- Slip-on removable cover fastened with plated steel screws.
- External mounting feet.
- Oil resistant gaskets are permanently secured.
- A bonding stud is provided on the door and a grounding stud is provided in the box..

Finish

- Enclosure and cover are finished in natural unfinished aluminum.

Distributed by Gross Automation | +1 (262) 252-1600 | sales@grossautomation.com

Technical references and CAD downloads available at www.hammondmfg.com

All dimensions in inches unless specified otherwise

Quality Products. Service Excellence.

Type 3/12/4 Mild Steel Junction Box *C3SC Series*

Heavy Duty Screw Cover

Commercial Enclosures Junction Boxes



Quick Link: hammfg.com/C3SC

Application

- Designed for use as a wiring box, junction box, terminal or pull box in indoor or outdoor applications where subject to windblown dust or rain.

Standards

- UL 508A Listed; Type 3, 4, 12
- cULus Listed per CSA C22.2 No 94; Type 3, 4, 12
- Complies with
 - NEMA Type 3, 4 and 12
 - IEC 60529, IP66

Construction

- 14 gauge steel body up to 12"x12"; 12 gauge body when 30"x30" or larger
- 14 gauge steel cover up to 24"x24"; 10 gauge cover when 16"x16" or larger
- Smooth, continuously welded seams without knockouts, cutouts, or holes
- Captivated stainless steel cover screws thread into sealed wells
- Seamless poured-in place gasket

Finish

- Enclosure and cover are finished with an ANSI 61 gray powder coating inside and outside

Part No.	H	W	D
C3SC664GY	6.00	6.00	4.00
C3SC864GY	8.00	6.00	4.00
C3SC884GY	8.00	8.00	4.00
C3SC1084GY	10.00	8.00	4.00
C3SC10104GY	10.00	10.00	4.00
C3SC12124GY	12.00	12.00	4.00
C3SC666GY	6.00	6.00	6.00
C3SC886GY	8.00	8.00	6.00
C3SC10106GY	10.00	10.00	6.00
C3SC12106GY	12.00	10.00	6.00
C3SC12126GY	12.00	12.00	6.00
C3SC16126GY	16.00	12.00	6.00
C3SC16166GY	16.00	16.00	6.00
C3SC18186GY	18.00	18.00	6.00
C3SC24246GY	24.00	24.00	6.00
C3SC888GY	8.00	8.00	8.00
C3SC12128GY	12.00	12.00	8.00
C3SC16168GY	16.00	16.00	8.00
C3SC20208GY	20.00	20.00	8.00
C3SC24208GY	24.00	20.00	8.00
C3SC24248GY	24.00	24.00	8.00
C3SC242410GY	24.00	24.00	10.00
C3SC242412GY	24.00	24.00	12.00
C3SC303012GY	30.00	30.00	12.00
C3SC363612GY	36.00	36.00	12.00

Distributed by Gross Automation | +1 (262) 252-1600 | sales@grossautomation.com

Technical references and CAD downloads available at www.hammondmfg.com

All dimensions in inches unless specified otherwise

Type 4X Stainless Steel Junction Box *C4XSC Series*

Heavy Duty Screw Cover



Part No.	H	W	D
C4XSC664SS	6.00	6.00	4.00
C4XSC864SS	8.00	6.00	4.00
C4XSC884SS	8.00	8.00	4.00
C4XSC1084SS	10.00	8.00	4.00
C4XSC10104SS	10.00	10.00	4.00
C4XSC12124SS	12.00	12.00	4.00
C4XSC666SS	6.00	6.00	6.00
C4XSC886SS	8.00	8.00	6.00
C4XSC10106SS	10.00	10.00	6.00
C4XSC12126SS	12.00	12.00	6.00
C4XSC16166SS	16.00	16.00	6.00
C4XSC18186SS	18.00	18.00	6.00
C4XSC24246SS	24.00	24.00	6.00
C4XSC12128SS	12.00	12.00	8.00
C4XSC16168SS	16.00	16.00	8.00
C4XSC24248SS	24.00	24.00	8.00
C4XSC242410SS	24.00	24.00	10.00
C4XSC242412SS	24.00	24.00	12.00
C4XSC303012SS	30.00	30.00	12.00
C4XSC363612SS	36.00	36.00	12.00

Quick Link: hammfg.com/C4XSC

Application

- Designed for use as a wiring box, junction box, terminal or pull box in indoor or outdoor applications where subject to hose down/precipitation or corrosion.

Standards

- UL 508A Listed; Type 3, 4X, 12
- cULus Listed per CSA C22.2 No 94; Type 3, 4X, 12
- Complies with
 - NEMA Type 3, 4X and 12
 - IEC 60529, IP66

Construction

- 14 gauge 304 stainless steel body up to 12"x12"; 12 gauge body when 30"x30" or larger
- 14 gauge 304 stainless steel cover up to 24"x24"; 10 gauge cover when 16"x16" or larger
- Smooth, continuously welded seams without knockouts, cutouts, or holes
- Captivated stainless steel cover screws thread into sealed wells
- Seamless poured-in place gasket

Finish

- Enclosure and cover are unpainted, with a grained #4 finish.

Distributed by Gross Automation | +1 (262) 252-1600 | sales@grossautomation.com

Technical references and CAD downloads available at www.hammondmfg.com

All dimensions in inches unless specified otherwise

Quality Products. Service Excellence.

Type 3R Painted Galvanized Steel Junction Box *C3R SC Series*

Lift-Off Cover with Screws and w/ Knockouts

Commercial Enclosures Junction Boxes



Quick Link: hammfg.com/C3RSC

Application

- Designed for use as a wiring/junction box.
- Provides protection against rain, sleet, snow and dripping water.

Standards

- UL-50 Type 3R
- CSA Type 3R
- Complies with:
 - NEMA Type 3R
 - IEC 60529, IP24

Construction

- Formed and spot welded from 16 or 14 gauge galvanized steel.
- Drip-shield top and seam-free sides, front and back.
- Slip-on removable cover fastened with plated steel screws.
- Door handles on body type C enclosures.
- Embossed mounting holes on back of enclosure on units with KO's.
- Easily removed knockouts on bottom of enclosure.
- Padlocking hasp.
- No Gasket.

Finish

- Enclosure and cover are finished in ANSI 61 gray powder coating.

Part No. with KO	Part No. less KO	Enclosure		
		H	W	D
C3R444SC	-	4	4	4
C3R644SC	-	6	4	4
C3R1244SC	-	12	4	4
C3R664SC	C3R664SCNKO	6	6	4
C3R864SC	-	8	6	4
C3R884SC	C3R884SCNKO	8	8	4
C3R1084SC	-	10	8	4
C3R1284SC	-	12	8	4
C3R10104SC	C3R10104SCNKO	10	10	4
C3R12104SC	-	12	10	4
C3R12124SC	C3R12124SCNKO	12	12	4
C3R18124SC	-	18	12	4
C3R18184SC	-	18	18	4
C3R666SC	-	6	6	6
C3R1866SC	-	18	6	6
C3R886SC	C3R886SCNKO	8	8	6
C3R1086SC	-	10	8	6
C3R10106SC	C3R10106SCNKO	10	10	6
C3R1286SC	-	12	8	6
C3R12106SC	-	12	10	6
C3R12126SC	C3R12126SCNKO	12	12	6
C3R15126SC	-	15	12	6
C3R16126SC	C3R16126SCNKO	16	12	6
C3R18126SC	-	18	12	6
C3R18186SC	C3R18186SCNKO	18	18	6
C3R24126SC	-	24	12	6
C3R24186SC	-	24	18	6
C3R24246SC	C3R24246SCNKO	24	24	6
C3R888SC	-	8	8	8
C3R2488SC	-	24	8	8
C3R12128SC	C3R12128SCNKO	12	12	8
C3R15128SC	-	15	12	8
C3R18128SC	-	18	12	8
C3R24168SC	-	24	16	8
C3R18188SC	C3R18188SCNKO	18	18	8
C3R24188SC	-	24	18	8
C3R24208SC	-	24	20	8
C3R24248SC	C3R24248SCNKO	24	24	8
C3R30248SC	-	30	24	8
C3R48368SC	-	48	36	8
C3R181810SC	-	18	18	10
C3R241810SC	C3R242410SCNKO	24	18	10
C3R242410SC	-	24	24	10
C3R302410SC	-	30	24	10
C3R242412SC	C3R242412SCNKO	24	24	12
C3R303012SC	C3R303012SCNKO	30	30	12
C3R363012SC	-	36	30	12
C3R363612SC	C3R363612SCNKO	36	36	12
C3R303016SC	-	30	30	16
C3R483616SC	-	48	36	16

Distributed by Gross Automation | +1 (262) 252-1600 | sales@grossautomation.com

Technical references and CAD downloads available at www.hammondmfg.com

All dimensions in inches unless specified otherwise

Type 3R Painted Galvanized Steel Junction Box *C3R HCR SM Series*

Hinge Door with Snap Latch and w/ Knockouts



Part No.	Enclosure			Optional Inner Panel		
	H	W	D	Part No.	H	W
C3R644HCR	6.00	4.00	4.00	N1JP64	4.25	2.25
C3R664HCR	6.00	6.00	4.00	N1JP66	4.25	4.25
C3R864HCR	8.00	6.00	4.00	N1JP86	6.25	4.25
C3R886HCR	8.00	8.00	6.00	N1JP88	6.25	6.25
C3R1086HCR	10.00	8.00	6.00	N1JP108	8.25	6.25
C3R12106HCR	12.00	10.00	6.00	N1JP1210	10.25	8.25
C3R12126HCR	12.00	12.00	6.00	N1JP1212	10.25	10.25
C3R121210HCR	12.00	12.00	10.00	N1JP1212	10.25	10.25

Quick Link: hammfg.com/C3RHCRSM

Application

- Designed for use as a wiring/junction box.
- Provides protection against rain, sleet, snow and dripping water.

Standards

- UL-50 Type 3R
- CSA Type 3R
- Complies with
 - NEMA Type 3R
 - IEC 60529, IP24

Construction

- Formed and spot welded from 16 gauge galvanized steel.
- Drip-shield top and seam-free sides, front and back.
- Galvanized steel hinge has stainless steel pin.
- Provisions for padlocking on zinc-plated draw pull catch.
- Easily removed knockouts on bottom of enclosure.
- Panel studs provided for mounting optional panels.
- External mounting feet.
- Oil resistant gaskets are permanently secured.

Finish

- Enclosure and cover are finished in ANSI 61 gray powder coating.

Accessories

- Additional Inner Panels...*See Page 298*
- Perforated Inner Panels...*See Page 301*

Distributed by Gross Automation | +1 (262) 252-1600 | sales@grossautomation.com

Technical references and CAD downloads available at www.hammondmfg.com

All dimensions in inches unless specified otherwise

Type 3R Painted Galvanized Steel Enclosure *C3R HCLO Series*

Lift-Off Hinge Door with Snap Latch

Commercial Enclosures

Panel Enclosures


 Quick Link: hammfg.com/C3RHCLCLO

Application

- Designed for use as a wiring/junction box.
- Provides protection against rain, sleet, snow and dripping water.

Standards

- UL-50 Type 3R
- CSA Type 3R
- Complies with
 - NEMA Type 3R
 - IEC 60529, IP24

Construction

- Formed and spot welded from 16 gauge galvanized steel (14 gauge when 24" wide)
- Extended height door and seam-free sides, front and back.
- Galvanized steel lift-off hinges with stainless steel pins.
- Cover fastened securely with zinc plated draw pull catches.
- Provisions for padlocking on zinc-plated draw pull catch.
- Embossed mounting holes on back.
- Foam gasket seal around door opening.

Finish

- Enclosure and cover are finished in ANSI 61 gray powder coating.

Accessories

- Additional Inner Panels...*See Page 294*
- Additional Inner Panels...*See Page 295*
- Swing Panel Kit...*See Page 302*

Part No.	Enclosure			Optional Inner Panel			Optional Panel	Optional Mount
	H	W	D	Part No.	H	W	Mounting Kit	Foot Kit
C3R864HCLO	8.00	6.00	4.00	14R0505	4.88	4.88	C3RHCLCLOPK1	C3RHCLCLOMFK1
C3R886HCLO	8.00	8.00	6.00	14R0705	6.75	4.88	C3RHCLCLOPK1	C3RHCLCLOMFK1
C3R1086HCLO	10.00	8.00	6.00	14R0707	6.75	6.88	C3RHCLCLOPK1	C3RHCLCLOMFK1
C3R12106HCLO	12.00	10.00	6.00	14R0909	8.75	8.88	C3RHCLCLOPK1	C3RHCLCLOMFK1
C3R12126HCLO	12.00	12.00	6.00	14R1109	10.75	8.88	C3RHCLCLOPK1	C3RHCLCLOMFK1
C3R16126HCLO	16.00	12.00	6.00	14R1311	12.75	10.88	C3RHCLCLOPK1	C3RHCLCLOMFK1
C3R16166HCLO	16.00	16.00	6.00	18P1313	13.00	13.00	C3RHCLCLOPK2	C3RHCLCLOMFK2
C3R20166HCLO	20.00	16.00	6.00	18P1713	17.00	13.00	C3RHCLCLOPK2	C3RHCLCLOMFK2
C3R20208HCLO	20.00	20.00	8.00	18P1717	17.00	17.00	C3RHCLCLOPK2	C3RHCLCLOMFK2
C3R24208HCLO	24.00	20.00	8.00	18P2117	21.00	17.00	C3RHCLCLOPK2	C3RHCLCLOMFK2
C3R24248HCLO	24.00	24.00	8.00	18P2121	21.00	21.00	C3RHCLCLOPK2	C3RHCLCLOMFK2
C3R30248HCLO	30.00	24.00	8.00	18P2721	27.00	21.00	C3RHCLCLOPK2	C3RHCLCLOMFK2

 Distributed by Gross Automation | +1 (262) 252-1600 | sales@grossautomation.com

 Technical references and CAD downloads available at www.hammondmfg.com

All dimensions in inches unless specified otherwise

Type 3R Painted Galvanized Steel Wallmount Enclosure *C3R HCRMD Series*

Continuous Hinge Door with Screws



Quick Link: hammfg.com/C3RHCRMD

Application

- Designed for use as a wiring/junction box.
- Provides protection against rain, sleet, snow and dripping water.

Standards

- UL-50 Type 3R
- CSA Type 3R
 - Complies with
 - NEMA Type 3R
 - IEC 60529, IP24

Construction

- Formed and spot welded from 16 or 14 gauge galvanized steel.
- Drip shield top and seam-free sides, front and back.
- Stainless steel continuous hinge.
- Cover fastened with captive plated screws.
- Padlocking hasp.
- Collar studs provided for mounting optional panels.
- External mounting feet.
- Oil resistant gaskets are permanently secured.

Finish

- Enclosure and cover are finished inside and out in ANSI 61 gray powder coating.

Accessories

- Additional Inner Panels...*See Page 295*
- Ventilation...*See Page 272*
- Swing Panel Kit...*See Page 302*

Part No.	Enclosure			Optional Inner Panel		
	H	W	D	Part Number	H	W
C3R16126HCR	16.00	12.00	6.00	18P1309	13.00	9.00
C3R16166HCR	16.00	16.00	6.00	18P1313	13.00	13.00
C3R18186HCR	18.00	18.00	6.00	18P1515	15.00	15.00
C3R20166HCR	20.00	16.00	6.00	18P1713	17.00	13.00
C3R20208HCR	20.00	20.00	8.00	18P1717	17.00	17.00
C3R24208HCR	24.00	20.00	8.00	18P2117	21.00	17.00
C3R24248HCR	24.00	24.00	8.00	18P2121	21.00	21.00
C3R30248HCR	30.00	24.00	8.00	18P2721	27.00	21.00
C3R30308HCR	30.00	30.00	8.00	18P2727	27.00	27.00
C3R181810HCR	18.00	18.00	10.00	18P1515	15.00	15.00
C3R242410HCR	24.00	24.00	10.00	18P2121	21.00	21.00
C3R302410HCR	30.00	24.00	10.00	18P2721	27.00	21.00
C3R363610HCR	36.00	36.00	10.00	18P3333	33.00	33.00
C3R303012HCR	30.00	30.00	12.00	18P2727	27.00	27.00
C3R362412HCR	36.00	24.00	12.00	18P3321	33.00	21.00
C3R363012HCR	36.00	30.00	12.00	18P3327	33.00	27.00
C3R423012HCR	42.00	30.00	12.00	18P3927	39.00	27.00
C3R363612HCR	36.00	36.00	12.00	18P3333	33.00	33.00
C3R423612HCR	42.00	36.00	12.00	18P3933	39.00	33.00
C3R483612HCR	48.00	36.00	12.00	18P4533	45.00	33.00
C3R603612HCR	60.00	36.00	12.00	18P5733	57.00	33.00
C3R303016HCR	30.00	30.00	16.00	18P2727	27.00	27.00
C3R483616HCR	48.00	36.00	16.00	18P4533	45.00	33.00

Commercial Enclosures Panel Enclosures

Distributed by Gross Automation | +1 (262) 252-1600 | sales@grossautomation.com

Technical references and CAD downloads available at www.hammondmfg.com

All dimensions in inches unless specified otherwise

Quality Products. Service Excellence.

Type 1 Mild Steel Splitter Box *CSB Series*

Hinged Door with Screw



Standards

- CSA Type 1
- Complies with
 - IEC 60529, IP20

Construction

- Formed and spot welded from 14 or 16 gauge steel.
- Factory installed splitter blocks - 3 or 4 wire option. Empty box without splitter blocks also offered.
- Series of knockouts on each side.
- Padlocking hasp.

Finish

- Enclosure and cover are finished in ANSI 61 gray powder coating.

Accessories

- Splitter Blocks...*See Page 236*
- Grounding Kits...*See Page 236*

Quick Link: hammfg.com/CSB

Application

- The splitter boxes are designed for indoor distribution of up to 600 A (max) service using either 3 or 4 wires. 75° C conductor ampacity permitted.

3 Wire Part No.	4 Wire Part No.	Less Blocks Part No.	CU/AL Amps	Enclosure			Splitter Block Reference
				H	W	D	
CSB73	CSB74	CSB70	70/70	12.00	10.00	4.00	CSBL125B
CSB103	CSB104	CSB100	125/120	15.00	10.00	4.00	CSBL125B
CSB203	CSB204	CSB200	225/180	18.00	12.00	5.00	CSBL225
CSB403	CSB404	CSB400	400/400	24.00	17.00	6.00	CSBL400
CSB603*	CSB604*	CSB600*	600/600	30.00	24.00	7.00	CSBL600

* 14 gauge steel

Commercial Enclosures Splitter Boxes

Distributed by Gross Automation | +1 (262) 252-1600 | sales@grossautomation.com

Technical references and CAD downloads available at www.hammondmfg.com

All dimensions in inches unless specified otherwise

Type 4/3R Mild Steel Splitter Box *CN4SB Series*

Hinge Door with Quarter Turn



Quick Link: hammfg.com/CN4SB

Application

- The splitter boxes are designed for distribution of up to 600 A (max) service using either 3 or 4 wires. 75° C conductor ampacity permitted.

Standards

- CSA Type 3R, 12, 4
- Complies with
 - IEC 60529, IP66

Construction

- Formed 16 gauge steel (14 gauge on 30x24)
- Factory installed splitter blocks.
- Smooth, continuously welded seams ground smooth.
- Door stiffeners are provided where required for increased strength and rigidity - designed to also permit additional mounting options.
- Formed lip on enclosure to exclude flowing liquids and contaminants.
- Door latches feature the added safety of quarter turn slot requiring use of tool for opening.
- Doors may be easily removed for modifications and are interchangeable.
- Seamless poured-in place gasket.
- Collar studs provided for mounting inner panel.
- Includes hardware kit with panel mounting nuts and sealing washers for wall mounting holes.
- Hinges are constructed from 304 stainless steel.
- Hinge pins are stainless steel.
- Inner panel is included.

Finish

- Cover and enclosure are finished in recoatable smooth ANSI 61 gray powder coating.
- Inner panel is finished in white powder coating.

Accessories

- Quarter Turn Inserts and Keys...*See Page 287*
- Mounting Foot Kit...*See Page 291*
- Rear Hole Plugs...*See Page 291*
- Replacement Hinge Pins...*See Page 288*
- Quarter Turn Assemblies...*See Page 287*
- Padlock Adaptor...*See Page 286*
- Splitter Blocks...*See Page 236*
- Grounding Kits...*See Page 236*
- Ventilation...*See Page 272*

3 Wire Part No.	4 Wire Part No.	CU/AL Amps	Enclosure			Optional Grounding Kit	Splitter Block Reference
			H	W	D		
CN4SB73	CN4SB74	70/70	12.00	10.00	5.00	CGK125	CSBL125B
CN4SB103	CN4SB104	125/120	15.00	10.00	5.00	CGK125	CSBL125B
CN4SB203	CN4SB204	225/180	18.00	12.00	5.00	CGK225	CSBL225
CN4SB403	CN4SB404	400/400	24.00	17.00	6.00	CGK400	CSBL400
CN4SB603*	CN4SB604*	600/600	30.00	24.00	7.00	CGK600	CSBL600

* 14 gauge steel

Distributed by Gross Automation | +1 (262) 252-1600 | sales@grossautomation.com

Technical references and CAD downloads available at www.hammondmfg.com

All dimensions in inches unless specified otherwise

Quality Products. Service Excellence.

Type 4X Stainless Steel Splitter Box *CN4SBSS Series*

Hinge Door with Quarter Turn



Quick Link: hammfg.com/CN4SBSS

Application

- The splitter boxes are designed for distribution of up to 600 A (max) service using either 3 or 4 wires. 75° C conductor ampacity permitted.

Standards

- CSA Type 3R, 12, 4X
- Complies with
 - IEC 60529, IP66

Construction

- Formed 16 gauge Type 304 stainless steel (14 gauge on 30x24)
- Factory installed splitter blocks.
- Smooth, continuously welded seams ground smooth.
- Door stiffeners are provided where required for increased strength and rigidity - designed to also permit additional mounting options.
- Formed lip on enclosure to exclude flowing liquids and contaminants.
- Door latches feature the added safety of quarter turn slot requiring use of tool for opening.
- Doors may be easily removed for modifications and are interchangeable.
- Seamless poured-in place gasket.
- Collar studs provided for mounting inner panel.
- Includes hardware kit with panel mounting nuts and sealing washers for wall mounting holes.
- Hinges are constructed from 304 stainless steel.
- Hinge pins are stainless steel.
- Inner panel is included.

Finish

- Cover and enclosure are natural stainless steel with a smooth brushed finish.
- Inner panel is finished in white powder coating.

3 Wire Part No.	4 Wire Part No.	CU/AL Amps	Enclosure			Optional Grounding Kit	Splitter Block Reference
			H	W	D		
CN4SB73SS	CN4SB74SS	70/70	12.00	10.00	5.00	CGK125	CSBL125B
CN4SB103SS	CN4SB104SS	125/120	15.00	10.00	5.00	CGK125	CSBL125B
CN4SB203SS	CN4SB204SS	225/180	18.00	12.00	5.00	CGK225	CSBL225
CN4SB403SS	CN4SB404SS	400/400	24.00	17.00	6.00	CGK400	CSBL400
CN4SB603SS *	CN4SB604SS *	600/600	30.00	24.00	7.00	CGK600	CSBL600

* 14 gauge steel

Commercial Enclosures

Splitter Boxes

Distributed by Gross Automation | +1 (262) 252-1600 | sales@grossautomation.com

Technical references and CAD downloads available at www.hammondmfg.com

All dimensions in inches unless specified otherwise

Type 1 Mild Steel Splitter Trough *CST Series*

Hinged Door with Screw



Application

- The splitter troughs are designed for distribution of up to 600 A (max) service using either 3 or 4 wires. 75° C conductor ampacity permitted.

Standards

- CSA Certified
- Complies with
 - IEC 60529, IP20

Construction

- Formed and spot welded from 16 gauge steel. When width is 8" or more, 14 gauge.
- Factory installed splitter blocks.
- Series of knockouts on each side.
- Padlocking hasp.

Finish

- Cover and enclosure are finished in recoatable smooth ANSI 61 gray powder coating.

Accessories

- Splitter Blocks...*See Page 236*
- Grounding Kits...*See Page 236*

Quick Link: hammfg.com/CST

3 Wire Part No.	4 Wire Part No.	Less Blocks Part No.	CU/AL Amps	Dimensions			Splitter Block Reference
				H	W	D	
CST273	CST274	-	70/70	24.00	6.00	4.00	CSBL125T
CST373	CST374	-	70/70	36.00	6.00	4.00	CSBL125T
CST473	CST474	-	70/70	48.00	6.00	4.00	CSBL125T
CST2103	CST2104	CST2100	125/120	24.00	6.00	4.00	CSBL125T
CST3103	CST3104	CST3100	125/120	36.00	6.00	4.00	CSBL125T
CST4103	CST4104	CST4100	125/120	48.00	6.00	4.00	CSBL125T
CST6103*	CST6104*	CST6100*	125/120	72.00	8.00	5.00	CSBL125T
CST2203*	-	CST2200*	225/225	24.00	8.00	5.00	CSBL225
CST3203*	CST3204*	CST3200*	225/225	36.00	8.00	5.00	CSBL225
CST4203*	CST4204*	CST4200*	225/225	48.00	8.00	5.00	CSBL225
CST5203*	CST5204*	CST5200*	225/225	60.00	8.00	5.00	CSBL225
CST6203*	CST6204*	-	225/225	72.00	8.00	5.00	CSBL225
CST3403*	-	CST3400*	400/400	36.00	10.00	6.00	CSBL400
CST4403*	CST4404*	CST4400*	400/400	48.00	10.00	6.00	CSBL400
CST5403*	CST5404*	CST5400*	400/400	60.00	10.00	6.00	CSBL400
CST6403*	CST6404*	CST6400*	400/400	72.00	10.00	6.00	CSBL400
CST4603*	CST4604*	-	600/600	48.00	10.00	6.00	CSBL600
CST5603*	CST5604*	-	600/600	60.00	10.00	6.00	CSBL600
CST6603*	CST6604*	-	600/600	72.00	10.00	6.00	CSBL600

* 14 gauge steel

Commercial Enclosures Splitter Trough

Distributed by Gross Automation | +1 (262) 252-1600 | sales@grossautomation.com

Technical references and CAD downloads available at www.hammondmfg.com

All dimensions in inches unless specified otherwise

Quality Products. Service Excellence.

Type 4/3R Mild Steel Splitter Trough *CN4ST Series*

Hinge Door with Quarter Turn



Inner Panel Included

Quick Link: hammfg.com/CN4ST

Application

- The splitter troughs are designed for distribution of up to 600 A (max) service using either 3 or 4 wires. 75° C conductor ampacity permitted.

Standards

- CSA Certified Type 3R, 12, 4
- Complies with
 - IEC 60529, IP66

Construction

- Formed and spot welded from 16 gauge steel. When width is 8" or more, 14 gauge.
- Factory installed splitter blocks.
- Smooth, continuously welded seams ground smooth.
- Door stiffeners are provided where required for increased strength and rigidity - designed to also permit additional mounting options.
- Formed lip on enclosure to exclude flowing liquids and contaminants.
- Door latches feature the added safety of quarter turn slot requiring use of tool for opening.
- Doors may be easily removed for modifications and are interchangeable.
- Seamless poured-in place gasket.
- Collar studs provided for mounting inner panel.
- Includes hardware kit with panel mounting nuts and sealing washers for wall mounting holes.
- Hinges are constructed from 304 stainless steel.
- Hinge pins are stainless steel.
- Inner panel is included.

Finish

- Cover and enclosure are finished in recoatable smooth ANSI 61 gray powder coating.
- Inner panel is finished in white powder coating.

Accessories

- Quarter Turn Inserts and Keys...*See Page 287*
- Mounting Foot Kit...*See Page 291*
- Rear Hole Plugs...*See Page 291*
- Replacement Hinge Pins...*See Page 288*
- Quarter Turn Assemblies...*See Page 287*
- Padlock Adaptor...*See Page 286*
- Splitter Blocks...*See Page 236*
- Grounding Kits...*See Page 236*

Commercial Enclosures Splitter Trough

3 Wire Part No.	4 Wire Part No.	CU/AL Amps	Enclosure			Optional Grounding Kit	Splitter Block Reference
			H	W	D		
CN4ST273	CN4ST274	70/70	24.00	6.00	5.00	CGK225	CSBL125T
CN4ST373	CN4ST374	70/70	36.00	6.00	5.00	CGK225	CSBL125T
CN4ST473	CN4ST474	70/70	48.00	6.00	5.00	CGK225	CSBL125T
CN4ST2103	CN4ST2104	125/120	24.00	6.00	5.00	CGK225	CSBL125T
CN4ST3103	CN4ST3104	125/120	36.00	6.00	5.00	CGK225	CSBL125T
CN4ST4103	CN4ST4104	125/120	48.00	6.00	5.00	CGK225	CSBL125T
CN4ST6103	CN4ST6104	125/120	72.00	8.00	6.00	CGK225	CSBL125T
CN4ST2203	-	225/225	24.00	8.00	5.00	CGK225	CSBL225
CN4ST3203	CN4ST3204	225/225	36.00	8.00	6.00	CGK225	CSBL225
CN4ST4203	CN4ST4204	225/225	48.00	8.00	6.00	CGK225	CSBL225
CN4ST5203	CN4ST5204	225/225	60.00	8.00	6.00	CGK225	CSBL225
CN4ST6203	CN4ST6204	225/225	72.00	8.00	6.00	CGK225	CSBL225
CN4ST3403	-	400/400	36.00	10.00	6.00	CGK400	CSBL400
CN4ST4403	CN4ST4404	400/400	48.00	10.00	6.00	CGK400	CSBL400
CN4ST5403	CN4ST5404	400/400	60.00	10.00	6.00	CGK400	CSBL400
CN4ST6403	CN4ST6404	400/400	72.00	10.00	6.00	CGK400	CSBL400
CN4ST4603	CN4ST4604	600/600	48.00	10.00	6.00	CGK600	CSBL600
CN4ST5603	CN4ST5604	600/600	60.00	10.00	6.00	CGK600	CSBL600
CN4ST6603	CN4ST6604	600/600	72.00	10.00	6.00	CGK600	CSBL600

Distributed by Cross Automation | +1 (262) 252-1600 | sales@grossautomation.com

Technical references and CAD downloads available at www.hammondmfg.com

All dimensions in inches unless specified otherwise

Type 4X Stainless Steel Splitter Trough *CN4STSS Series*

Hinged Door with Quarter Turn



Quick Link: hammfg.com/CN4STSS

Application

- The splitter troughs are designed for distribution of up to 600 A (max) service using either 3 or 4 wires. 75° C conductor ampacity permitted.
- Stainless steel construction provides corrosion resistance in outdoor or more hostile environments.

Standards

- CSA Certified Type 3R, 12, 4X
- Complies with
 - IEC 60529, IP66

Construction

- Formed and spot welded from 16 gauge 304 stainless steel. When width is 8" or more, 14 gauge.
- Factory installed splitter blocks.
- Smooth, continuously welded seams ground smooth.
- Door stiffeners are provided where required for increased strength and rigidity - designed to also permit additional mounting options.
- Formed lip on enclosure to exclude flowing liquids and contaminants.
- Door latches feature the added safety of quarter turn slot requiring use of tool for opening.
- Doors may be easily removed for modifications and are interchangeable.
- Seamless poured-in place gasket.
- Collar studs provided for mounting inner panel.
- Includes hardware kit with panel mounting nuts and sealing washers for wall mounting holes.
- Hinges are constructed from 304 stainless steel.
- Hinge pins are stainless steel.
- Inner panel is included.

Finish

- Cover and enclosure are natural stainless steel with a smooth brushed finish.
- Inner panel is finished in white powder coating.

3 Wire		4 Wire		CU/AL			Enclosure			Optional		Splitter	
Part No.	Part No.	Amps	H	W	D				Grounding Kit	Block Reference			
CN4ST273SS	CN4ST274SS	70/70	24.00	6.00	5.00				CGK225	CSBL125T			
CN4ST373SS	CN4ST374SS	70/70	36.00	6.00	5.00				CGK225	CSBL125T			
CN4ST473SS	CN4ST474SS	70/70	48.00	6.00	5.00				CGK225	CSBL125T			
CN4ST2103SS	CN4ST2104SS	125/120	24.00	6.00	5.00				CGK225	CSBL125T			
CN4ST3103SS	CN4ST3104SS	125/120	36.00	6.00	5.00				CGK225	CSBL125T			
CN4ST4103SS	CN4ST4104SS	125/120	48.00	6.00	5.00				CGK225	CSBL125T			
CN4ST6103SS	CN4ST6104SS	125/120	72.00	8.00	6.00				CGK225	CSBL125T			
CN4ST2203SS	-	225/225	24.00	8.00	5.00				CGK225	CSBL225			
CN4ST3203SS	CN4ST3204SS	225/225	36.00	8.00	6.00				CGK225	CSBL225			
CN4ST4203SS	CN4ST4204SS	225/225	48.00	8.00	6.00				CGK225	CSBL225			
CN4ST5203SS	CN4ST5204SS	225/225	60.00	8.00	6.00				CGK225	CSBL225			
CN4ST6203SS	CN4ST6204SS	225/225	72.00	8.00	6.00				CGK225	CSBL225			
CN4ST3403SS	-	400/400	36.00	10.00	6.00				CGK400	CSBL400			
CN4ST4403SS	CN4ST4404SS	400/400	48.00	10.00	6.00				CGK400	CSBL400			
CN4ST5403SS	CN4ST5404SS	400/400	60.00	10.00	6.00				CGK400	CSBL400			
CN4ST6403SS	CN4ST6404SS	400/400	72.00	10.00	6.00				CGK400	CSBL400			
CN4ST4603SS	CN4ST4604SS	600/600	48.00	10.00	6.00				CGK600	CSBL600			
CN4ST5603SS	CN4ST5604SS	600/600	60.00	10.00	6.00				CGK600	CSBL600			
CN4ST6603SS	CN4ST6604SS	600/600	72.00	10.00	6.00				CGK600	CSBL600			

Commercial Enclosures Splitter Trough

Distributed by Gross Automation | +1 (262) 252-1600 | sales@grossautomation.com

Technical references and CAD downloads available at www.hammondmfg.com

All dimensions in inches unless specified otherwise

Quality Products. Service Excellence.

Splitter Blocks

Application

- These blocks are used in Hammond standard splitter troughs and boxes.
- The design includes the main and branch lugs which can use either copper or aluminum conductors.
- All blocks are rated 600 V.
- 75° C conductor ampacity permitted.

Construction

- Cu-Al monopiece connectors are secured to insulators.
- Each block includes a main lug and branch lugs.

Finish

- N/A



Part No.	Main Lug Ampacity	Max./Min. Wire Capacity	Branch Lugs Ampacity	Max./Min. Wire Capacity
CSBL125B	125	1/0 - 14	3/70	3 x (2-14)
CSBL125T	125	1/0 - 14	6/70	6 x (2-14)
CSBL225	225	300MCM - 6	6/125	6 x (2/0-14)
CSBL400	400	600MCM - 4 or (2x) 250 MCM - 1/0	6/200	6 x (3/0-14)
CSBL600	600	(2x) 600MCM - 4 or (4x) 250MCM - 1/0	6/200	6 x (3/0-14)

Commercial Enclosures

Splitter Boxes

Grounding Kits

Application

- Designed for use with aluminum and copper conductors.

Standards

- CSA Certified

Construction

- Lugs are constructed from high strength, high conductive aluminum alloy 6061-T6, rated at 90°C.
- Kits are supplied with all necessary mounting hardware.

Finish

- N/A



Part No.	Application	Number of Circuits and Wire Sizes
CGK125	Splitter Box 70 A, 125 A	4 x (2-14 CU-AL)
CGK225	Splitter Box 225 A/Trough 70 A, 125A, 225 A	7 x (2-14 CU-AL)
CGK400	Splitter Box/Trough 400 A	7 x (2-14 CU-AL) & 1 x (1/0-14 CU-AL)
CGK600	Splitter Box/Trough 600 A	7 x (2-14 CU-AL) & 1 x (300 MCM - 6 CU-AL)
CGK	Junction/Pull Box	3 x (4-14 CU-AL)

Distributed by Gross Automation | +1 (262) 252-1600 | sales@grossautomation.com

Technical references and CAD downloads available at www.hammondmfg.com

All dimensions in inches unless specified otherwise

Type 1 Mild Steel Metering Cabinets *CMC Series*

Hinge Door with Quarter Turn



Quick Link: hammfg.com/CMC

Application

- Designed for indoor housing of metering transformers.

Standards

- CSA Type 1
- Complies with
 - IEC 60529, IP20

Construction

- Formed and spot welded from 14 or 16 gauge steel.
- Spot welded construction and formed edges.
- Removable inner panel.
- Single and Double Door versions
- Hinged covers - single door with hasp closure, double door with hasp and quarter turn closure.
- 2 cutouts in top of each cabinet with metering plates included (except 27x13x10")

Finish

- Enclosure and cover are finished in ANSI 61 gray inside and out.
- Inner panel is finished in white powder coating

Part No.	Type of Door	Enclosure			Inner Panel	
		H	W	D	H	W
CMC202010	Single	20.00	20.00	10.00	16.00	16.00
CMC271310*	Single	27.00	13.00	10.00	23.00	9.00
CMC302010	Single	30.00	20.00	10.00	26.00	16.00
CMC303010	Double	30.00	30.00	10.00	26.00	26.00
CMC363612	Double	36.00	36.00	12.00	32.00	32.00
CMC484812	Double	48.00	48.00	12.00	44.00	44.00

* No cutouts in top or metering plates

Distributed by Gross Automation | +1 (262) 252-1600 | sales@grossautomation.com

Technical references and CAD downloads available at www.hammondmfg.com

All dimensions in inches unless specified otherwise

Quality Products. Service Excellence.

Type 1 Mild Steel Metering Cabinets (Hydro Quebec Version) *CMC Q Series*

Hinge Door with Quarter Turn

Commercial Enclosures Metering Cabinets


 Quick Link: hammfg.com/CMCQ

Application

- Designed for indoor housing of metering transformers per Hydro Quebec specifications.

Standards

- CSA Type 1
- Complies with
 - IEC 60529, IP20

Construction

- Formed and spot welded from 14 or 16 gauge steel.
- Spot welded construction and formed edges.
- Removable inner panels.
- Hinged covers.
- 2 cutouts in top of each cabinet with metering plates included.

Finish

- Enclosure and cover are finished in ANSI 61 gray inside and out.
- Inner panel is finished in ANSI 61 gray powder coating.

Panel Selection Guide

Part No.	Panel supplied with enclosure			Panel capacity per enclosure		
	CMCQP1	CMCQP2	CMCQP3	CMCQP1	CMCQP2	CMCQP3
CMCQ303010	1	1	1	1	1	1
CMCQ363612	1	1	1	2	1	1
CMCQ484812	1	1	1	2	2	1

Enclosure

Part No.	H	W	D	Gauge
CMCQ303010	30.00	30.00	10.00	16
CMCQ363612	36.00	36.00	12.00	14
CMCQ484812	48.00	48.00	12.00	14

Panels

Part No.	Description	H	W
CMCQP1	Accessory Plate	24.68	7.00
CMCQP2	Universal Support Current Panel	12.76	13.39
CMCQP3	Universal Support Voltage Panel	25.59	15.01

 Distributed by Gross Automation | +1 (262) 252-1600 | sales@grossautomation.com

 Technical references and CAD downloads available at www.hammondmfg.com

All dimensions in inches unless specified otherwise

Type 1 Mild Steel Metering Cabinets (Ontario Hydro Version) *CMC O Series*

Hinge Door with Handle and Viewing Window



Quick Link: hammfg.com/CMCO

Application

- Designed for certain specific Ontario metering applications.

Standards

- N/A

Construction

- Spot welded 16 gauge steel construction.
- Heavy duty padlockable "L" handle.
- Viewing window with removable cover plate.
- Pre-mounted ground lug.
- Inner panel with pre-drilled holes and mounting bracket.
- Oil resistant gasket.

Finish

- Enclosure and cover are finished in ANSI 61 gray inside and out.
- Inner panel is finished in ANSI 61 gray powder coating.

Part No.	Enclosure			Inner Panel	
	H	W	D	H	W
CMCO241610	24	16	10	20.5	14.75

Distributed by Gross Automation | +1 (262) 252-1600 | sales@grossautomation.com

Technical references and CAD downloads available at www.hammondmfg.com

All dimensions in inches unless specified otherwise

Quality Products. Service Excellence.

Type 3R Mild Steel Metering Cabinets *C3RMC Series*

Hinge Door with Handle

Commercial Enclosures Metering Cabinets


 Quick Link: hammfg.com/C3RMC

Application

- Designed for outdoor housing of metering transformers.

Standards

- CSA Approved, Type 3R
- Complies with
 - NEMA Type 3R
 - IEC 60529, IP24

Construction

- Offered in single and double door versions.
- Formed and seam welded from 14 or 16 gauge steel.
- Smooth, continuously welded seams ground smooth.
- Formed lip on enclosure to exclude flowing liquids and contaminants.
- Padlockable “L” style handle for 3 point latch system
- Oil resistant gaskets are permanently secured.
- Removable inner panel included.
- Collar studs provided for mounting inner panel.
- Doors may be easily removed for modifications and are interchangeable.
- Bonding stud provided on door and grounding stud installed in enclosure.
- Hinges are constructed from 304 stainless steel.
- Hinge pins are stainless steel.

Finish

- Cover and enclosure are phosphatized and finished with a recoatable ANSI 61 smooth Gray powder inside and out.
- Removable inner panel is finished in white powder coating.

Accessories

- Door Stop Kit...*See Page 320*
- Drip Shield Kit...*See Page 319*
- Mounting Foot Kit...*See Page 291*
- Ventilation...*See Page 272*

Part No.	Type of Door	Enclosure			Inner Panel	
		H	W	D	H	W
C3RMC202010	Single	20.00	20.00	10.00	18.17	18.17
C3RMC271310	Single	27.00	13.00	10.00	25.17	11.17
C3RMC302010	Single	30.00	20.00	10.00	28.17	18.17
C3RMC303010	Double	30.00	30.00	10.00	28.17	28.17
C3RMC363612	Double	36.00	36.00	12.00	34.17	34.17
C3RMC484812	Double	48.00	48.00	12.00	46.17	46.17

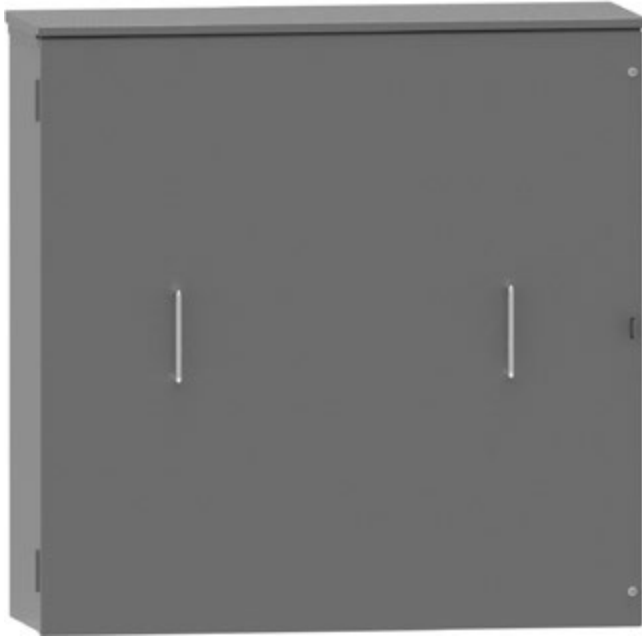
 Distributed by Gross Automation | +1 (262) 252-1600 | sales@grossautomation.com

 Technical references and CAD downloads available at www.hammondmfg.com

All dimensions in inches unless specified otherwise

Type 3R Current Transformer Cabinet *HCT Series*

Single and Double Door Enclosures



Quick Link: hammfg.com/HCT

Application

- Designed for use as Current Transformer Cabinet to house and protect instrument current transformers in outdoor applications.
- Can also be used as a general purpose enclosure for various junction, meter, transformer and relay applications..
- Provides protection against rain, sleet, snow and dripping water.

Standards

- UL 50 Type 3R
- Complies with
 - NEMA Type 3R
 - IEC 60529, IP24

Construction

- Body and covers formed from 14 gauge galvanized steel (12 gauge for units 30" and wider)
- Mounting studs for optional inner panels
- Integral drip shield top and seam free sides
- Mounting holes provided through back of enclosure
- Permanently installed lift off hinges
- Removable doors
- Single door design with hasp/screw closure. Double door design with handle.
- Padlocking provisions provided
- ANSI 61 Gray Polyester Powder finish inside and outside

Finish

- Cover and enclosure are phosphatized and finished with a recoatable ANSI 61 smooth Gray powder inside and out.

Accessories

- Additional Inner Panels...*See Page 295*
- Perforated Inner Panels...*See Page 299*
- Door Stop Kit...*See Page 320*
- Ventilation...*See Page 272*

Part No.	Type of Door	Enclosure			Optional Panel Part No.
		H	W	D	
HCT302411H	Single	30.00	24.00	11.00	18P2721
HCT362011H	Single	36.00	20.00	11.00	18P3317
HCT363011H	Single	36.00	30.00	11.00	18P3327
HCT363611H	Single	36.00	36.00	11.00	18P3333
HCT482411H	Single	48.00	24.00	11.00	18P4521
HCT483011H	Single	48.00	30.00	11.00	18P4527
HCT483611H	Single	48.00	36.00	11.00	18P4533
HCT484814H	Double	48.00	48.00	14.00	18P4545

Distributed by Gross Automation | +1 (262) 252-1600 | sales@grossautomation.com

Technical references and CAD downloads available at www.hammondmfg.com

All dimensions in inches unless specified otherwise

Quality Products. Service Excellence.

Type 1 Mild Steel Component Case *1416 Series*

Ventilated Cover with Screws

Commercial Enclosures Vented Cases



Quick Link: hammfg.com/1416

Application

- Designed to provide mechanical protection for components requiring ventilation.
- Suitable for use where heat dissipation is required.

Standards

- Complies with
 - NEMA Type 1

Construction

- Base is formed from 16 gauge steel with two 0.5"/0.75" conduit knockouts located in each end.
- Four .125" high raised dimples with mounting holes are provided on the base.
- Cover is formed from 18 gauge steel with 0.235" x 1.5" ventilating slots (0.199" x 1.12" on E & G only).
- Screw holes and offsets in the cover allow easy assembly.

Finish

- Base and cover are finished in ANSI 61 gray powder coating.

Part No.	Enclosure		
	H	W	D
1416E	6.00	4.00	4.00
1416G	10.00	4.00	4.00
1416I	10.00	6.00	6.00
1416K	11.00	7.00	7.00
1416M	12.00	8.00	8.00
1416O	15.00	10.00	8.00
1416Q	20.00	10.00	8.00
1416T	20.00	10.00	10.00

Distributed by Gross Automation | +1 (262) 252-1600 | sales@grossautomation.com

Technical references and CAD downloads available at www.hammondmfg.com

All dimensions in inches unless specified otherwise