



IP69K

PRODUCTS

From Federal Signal

THE **BROADEST LINE**

OF **IP69K** COMPLIANT PRODUCTS
IN THE INDUSTRY



Products for dust-tight environments, that withstand high-pressure and high-temperature washdowns.

What is IP69K?

IP69K is the highest standard on the Ingress Protection (IP) rating scale. This rating was designed for applications in which products are regularly exposed to high-pressure and high-temperature washdowns. IP69K ensures the highest confidence in harsh environments where sanitation and cleanliness are required.

IP69K products are ideal for applications in:

- Food and Beverage
- Wastewater
- Pharmaceutical
- Marine
- Medical Facilities
- Medical Equipment Manufacturing

IP69K products help reduce product failures due to water/dust ingress, increasing productivity and decreasing production downtime.

IP rating system

The IP rating system is defined in international standard IEC 60529.

IP ratings are used to classify and define levels of ingress protection on electrical devices against solids and water. By defining a rating, the IP system ensures specific levels of coverage when products are faced with varying elements.



HOW IS IP69K DIFFERENT FROM NEMA TYPE 4?

Both standards require the product to withstand water but at different levels. The IP69K rating is important when products are being sprayed down at closer distances.

IP69K

- ✓ High pressure
- ✓ Low volume/
High temperature
- ✓ Short distance
6" max
- ✓ Dust-tight

NEMA TYPE 4

- ✓ Low pressure
- ✓ High volume
65 gallons/minute
- ✓ Long distance
10–12ft

Our products endured the following testing:



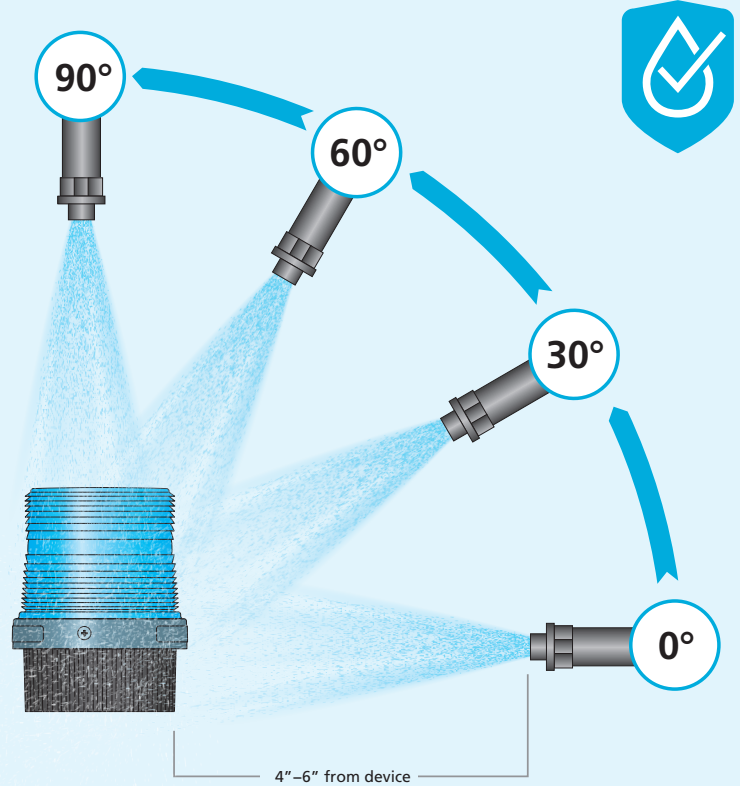
IP69K

Dust-tight tested in an Arizona A2 Dust 2kg/m³ chamber for 6 seconds at a time, every 15 minutes for five hours.



IP69K

Testing which included high-pressure steam jet cleaning, water sprays of 1160–1450 psi every 30 seconds. The water is sprayed from 4 different angles, at a distance of 4–6 inches, and temperatures of 176°F (80°C).



Federal Signal has the
**BROADEST SELECTION
OF IP69K PRODUCTS!**

WE OFFER OVER 700 MODELS
for safe area, hazardous and explosion proof
applications that meet all environmental ratings.

**YOUR SAFETY
AND SECURITY
IS OUR PRIORITY!**

CERTIFICATIONS

In addition to IP69K, our products have been designed to meet or exceed the uncompromising standards of UL, CSA, CSFM, IECEx, and other global certifications. And with our ISO 9001 Certification, we want you to know that we are committed to quality.



SAFE AREA



Models 121SLED
and 121ALED

Vitalite® Rotating LED Lights



Model 225

Electraray® Rotating LED Warning Light



Model 350WB

Weatherproof Vibratone® Horn with Back Box



Model 371LED

Commander® LED Rotating Beacon



Models FB2LED
and FB2LED-QC

Fireball® LED Light

Models FB2PST
and FB2PST-I

Fireball® Strobe Lights

Model FB24ST

Fireball® Supervised Strobe Light



Models FB24STHI and
FB24STHI-024C-CN

Fireball® Supervised Hearing Impaired
Strobe Lights



Models LP3M, LP3P
and LP3S

StreamLine® Low Profile Strobe Lights

Models LP3SL,
LP3PL and LP3ML

StreamLine® Low Profile Steady Burning
LED Lights



Models PMA
and PMAMT

Panel Mount Electronic Sounders

SAFE AREA



Model PMC

Panel Mount Multifunctional LED Combination Audible/Visual Signal



Models PMLMP and PMLST

Panel Mount Multifunctional LED Beacons



Models PM22L and PM22L RGB

Panel Mount 22mm Multifunctional LED



Model RSL

Radiant Configurable Stack Light



Models LP57 and LP57 RGB

StreamLine® Mini LED Beacon Series



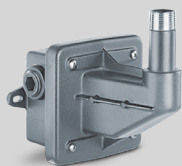
Models SLM100, SLM200, SLM300/350, SLM1400/1450 and SLMBS, SLMBD and SLMBP

StreamLine® Modular Multifunctional LED Beacons and Mounting Options



Model SST3-MV-SB

Remotely Selectable Electronic Siren



Model LSWB

Wall Mounting Kit for 4X, Safe Area Applications

HAZARDOUS LOCATION



Model 151XST

Hazardous Location Strobe Light

Model 154XST

Hazardous Location Supervised Strobe Light

Models 191XL and
191XL-CN

Hazardous Location LED Lights



Models 154XSTHI and
154XST-CN

Hazardous Location Supervised Fire Listed
Strobe Lights



Model 224XST

Electrarray® Supervised Hazardous Location
Strobe Light



Model 224XSTHI

Electrarray® Supervised Hearing Impaired
Hazardous Location Strobe Light



Model 225X

Electrarray® Hazardous Location Rotating LED
Warning Light



Model 225XL

Electrarray® Hazardous Location LED Flashing Light



Models 225XST
and 225XST-I

Electrarray® Hazardous Location Strobe Lights



Model 371DST

Commander® Double Strobe Hazardous
Location Light



Model 371LEDX

Hazardous Location Commander® LED
Rotating Light



Models FB2LEDX,
FB2LEDX-CN, FB2LEDX-QC,
FB2LEDX-QC-S

Fireball® Hazardous Location Single and Multicolor
LED Lights

HAZARDOUS LOCATION



Model G-LED

Global Series® LED Beacon



Model G-STR

Global Series® 15J and 21J Strobe



Model 350WBX

Vibratone® Hazardous Location Horn with Back Box



Model 450EWBX

Vibratone® Hazardous Location Electronic Horn



Models 300GCX and 300GCX-CN (15W), 302GCX and 302GCX-CN (30W)

SelectTone® Hazardous Location Amplified Speakers



Models 304GCX and 304GCX-CN (15W), 314GCX and 314GCX-CN (15W)

SelectTone® Hazardous Location Supervised Amplified Speakers



Models AM300GCX (15W) and AM302GCX (30W)

AudioMaster® Public Address Hazardous Location Speakers



Model AM15XD2

Public Address Hazardous Location Speaker



Model SST3GCX-MV

Hazardous Location Remotely Selectable Electronic Siren

HAZARDOUS LOCATION



Models ASHH (15W)
and ASUH (30W)

Hazardous Location Amplified Speakers



Model LHWB

Wall Mounting Bracket for Hazardous Location Applications

EXPLOSION-PROOF



Model 27XST-024-4-MOD

Explosion-Proof Supervised Strobe Light

Model 24XST

Explosion-Proof Supervised Strobe Light

Model 27XST

Explosion-Proof Strobe Light

Model 27XL

Explosion-Proof LED Light



Model FSEX

Explosion-Proof Strobe Light



Models 24XSTHI-MOD
and 24XSTHI-CN

Explosion-Proof Hearing Impaired Strobe Light

Model FSEX-HI

Hearing Impaired Explosion-Proof Strobe Light



Model 121X

Explosion-Proof Rotating Light



2645 Federal Signal Drive
University Park, IL 60484
Tel: +1 708.534.4756
www.fedsig.com