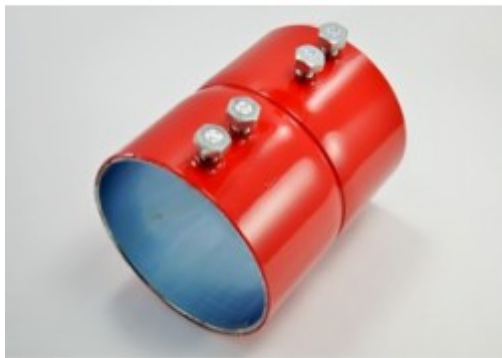


EMT Couplings, Color-Coded, Steel, Red, Size 4"

Bridgeport's Color Coded set screw couplings are used to join two lengths of EMT. Color coded red to match EMT for easy identification. Use with red EMT for emergency circuits, fire alarm and security system applications.

Furnished with Tri-Drive slot/Phillips/Robertson head screws. Also listed for use with Aluminum EMT.

Patented. US Patent 6,861,585.



[Download Photo](#)

[Download Drawing](#)

Product details

| | |
|-----------------------------------|-------------|
| Catalog Number: | 249-SR |
| UPC Number: | 78174702249 |
| Primary Materials: | Steel |
| Finish: | Red Paint |
| Trade Size: | 4" |
| Unit Quantity: | - |
| Standard Package Quantity: | 6 |

Dimensions

| | |
|----------------------|--------|
| Trade Size: | 4" |
| Dimensions A: | 5 |
| Dimensions B: | 4.8125 |

Certifications & Codes

Federal Specification Number: A-A-50553

UL File Number: E24001

UNSPSC: 39131707

Nema Standard: FB-1

UL Standard: UL-514B

Patent Number: US Patent 6,861,585