

NOTES:

1. MATERIAL:
BODY - ALUMINUM, TIN PLATED
SCREW - ALUMINUM, TIN PLATED
NOTE: LAMAR3-10-Q SCREW - STEEL, ZINC PLATED
2. UL LISTED AND CSA CERTIFIED FOR USE UP TO 600V & TEMPERATURE RATED 90°C (AL9CU)
3. DUAL RATED FOR USE WITH COPPER OR ALUMINUM STRANDED & SOLID CODE CONDUCTOR
4. THESE PARTS ARE RoHS COMPLIANT
5. USE OF OXIDE INHIBITING JOINT COMPOUND LIKE PANDUIT CMP-100 RECOMMENDED FOR PAD TO PAD AND CONDUCTOR SURFACES
6. SEE PACKAGING LABEL FOR TIGHTENING TORQUE INFORMATION
7. PKG QTY:
Q = 25
6 = 6

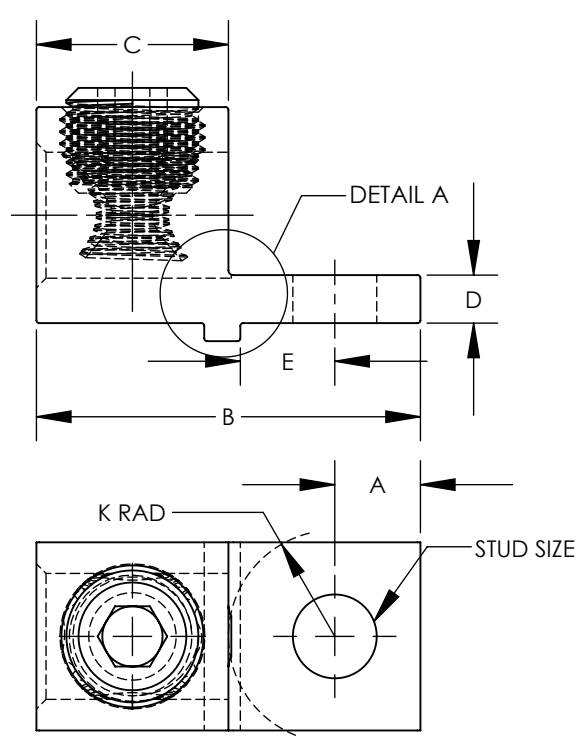


FIGURE 1

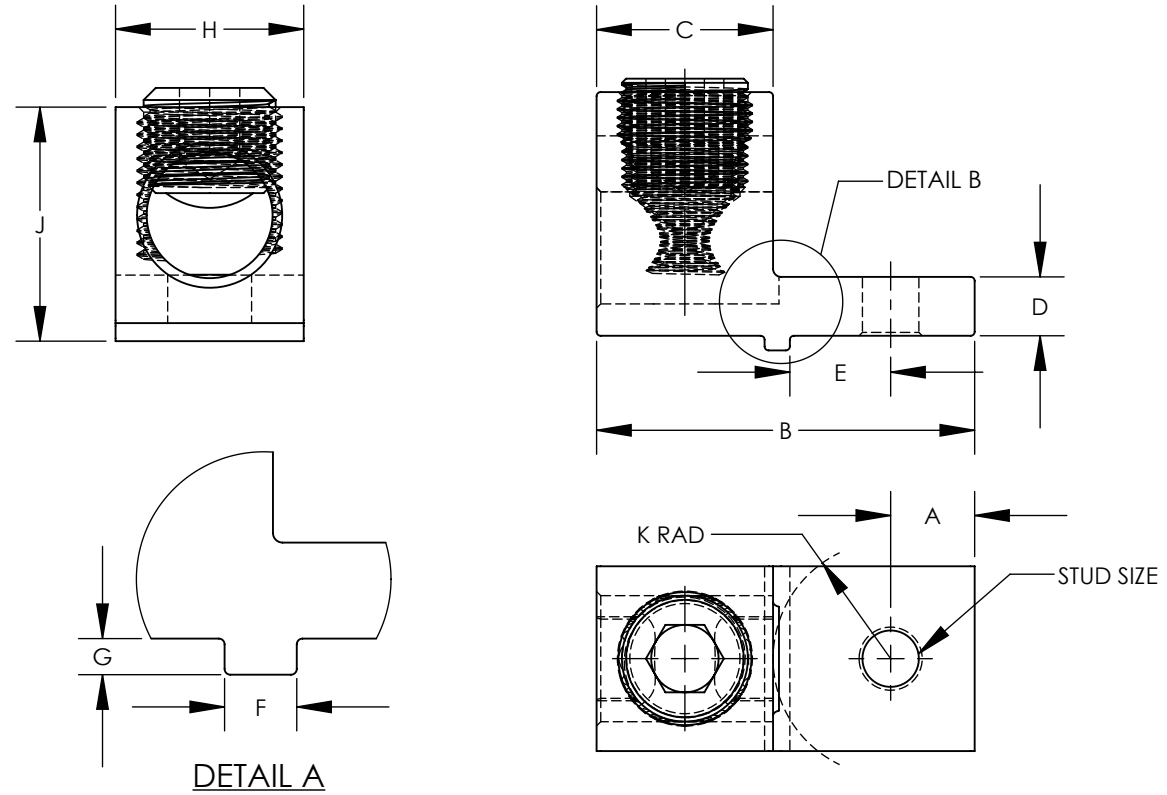


FIGURE 2



PART NUMBER	FIG.	WIRE RANGE COPPER/ALUMINUM	WIRE STRIP LENGTH IN [mm]	STUD SIZE IN	DIMENSIONS - IN [mm] ±.02 [0.5]										HEX KEY
					A	B	C	D	E	F	G	H	J	K	
LAMAR3-10-Q	1	#14 SOL - #3 STR AWG	.53 [13.5]	#10	.24 [6.1]	.99 [25.1]	.53 [13.5]	.12 [3.0]	.22 [5.6]	.12 [3.0]	.06 [1.5]	.49 [12.5]	.62 [15.7]	.22 [5.6]	SLOTTED SCREWDRIVER
LAMAR2/0-14-Q	1	#14 SOL - #2/0 STR AWG	.61 [15.5]	1/4	.31 [7.9]	1.20 [30.5]	.61 [15.5]	.19 [4.8]	.30 [7.6]	.13 [3.3]	.13 [3.3]	.60 [15.2]	.91 [23.1]	.29 [7.4]	3/16"
LAMAR300-38-Q	1	#6 SOL -300 STR kcmil	1.00 [25.4]	3/8	.45 [11.4]	2.00 [50.8]	1.00 [25.4]	.25 [6.4]	.49 [12.4]	.19 [4.8]	.10 [2.5]	.98 [24.9]	1.22 [30.9]	.55 [13.9]	5/16"
LAMAR350-56-Q	1	#6 SOL -350 STR kcmil	1.00 [25.4]	5/16	.41 [10.4]	1.91 [48.5]	1.00 [25.4]	.25 [6.4]	.50 [12.7]	.19 [4.8]	.13 [3.3]	1.00 [25.4]	1.25 [31.8]	.50 [12.7]	5/16"
LAMAR630S-38-6	2	#4 SOL -600 STR kcmil (2) #1/0 STR - 250 STR kcmil	1.31 [33.3]	3/8	.63 [16.0]	2.81 [33.4]	1.31 [33.3]	.44 [11.2]	.75 [19.1]	.19 [4.8]	.11 [2.8]	1.38 [35.1]	1.92 [48.8]	.88 [22.4]	1/2"

REV	DATE	BY	CHK	APR	DESCRIPTION	ECN
03	4/20	JHNU	RGB	RGB	REVISED WIRE RANGE FOR LAMAR350-56-Q: #6-350 kcmil was #6-300 kcmil	00186EAA-DC
02	8/19	JHNU	JHNU	RGB	REVISED WIRE RANGE, NOTES	00186EAA-DC
01	7/18	DAKO	DAKO	RGB	REVISED PART NUMBER: LAMAR2/0-14-Q WAS LAMAR2/0-25-Q REVISED PART NUMBER: LAMAR350-56-Q WAS LAMAR350-516-Q	
00	6/18	DAKO	DAKO	RGB	DRAWING RELEASED	034918

TITLE LAMAR SERIES ANTI-ROTATIONAL ALUMINUM MECHANICAL LUGS CUSTOMER DRAWING						
ITEM REVISION NAME 00186EAA/03				PANDUIT		
DATASET FILE NAME 00186EAA-DC/03.SLDDRW						
UNLESS OTHERWISE SPECIFIED, DIMENSIONAL TOLERANCES ARE: IN [mm] .X ± .XXX ± .XX ± ANGLES ±						
DRAWN BY DAKO				DATE 4/18		CHK RGB
SCALE NONE				THIRD ANGLE PROJECTION		DRAWING NUMBER 00186EAA-DC
SHEET 1 OF 1				SIZE B		