



Quality Products. Service Excellence.

Open Frame Wall Rack *RB-2PW Series*

Load rated up to 200 lbs (91 kg)



Features

- The rails are constructed in 12-gauge steel while the while brackets are constructed in 14 gauge steel.
- One (1) pair of EIA-310-E compliant 10-32 threaded rails spaced at 19" mounting and includes rack unit indicators.
 - Includes starter pack of **SCREW1032-25** screws.
- Provides 18 inches of usable mounting depth.
 - An optional **RB-2PW-EXT** extender can be used to add up to 7" of usable mounting depth while maintaining the load capacity.
- Open-rear design can be installed over existing equipment.
- Self-squaring design ships un-assembled (some assembly required).
- Up to 200 lbs (90.72 kg) **static load rating**.
- Finished in RAL9005 black powder paint. Complies with the Greenguard guidelines for indoor air quality.
- TAA-compliant for federal GSA schedule purchases within the USA.
- RoHS Compliant.
- Manufactured in North America within an ISO 9001:2015 certified facility.

RACK BASICS®

A HAMMOND BRAND

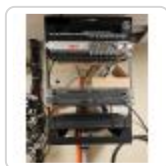
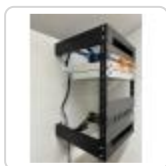


Need a different height? Purchase our 8U version and the desired height of our **URR Rack Rails** (Add 4U to the desired height). Note we only approve the weight capacity up to 20U.



This product is not designed nor intended to be used for non-wall mounted applications.

Gallery



Accessories

- Mounting Rack Rails
- Wall Rack Cable Manager
- Adjustable Rack Shelf
- Clamping Rack Shelf
- Hinged Clear Security Cover
- We Manufacture PDUs and Outlet Strips
- Cable Managers
- Rack Panels
- Universal Rack Shelf
- Keyboard & Equipment Rack Shelf
- Adjustable Rack Mount DIN Rail Kit
- Ground Stud Kit

Part No.	Overall Dimensions			Rack Units	Mounting Dimensions			Weight Capacity	Vertical Cable Manager Part No.
	Height	Width	Depth		Height	Width	Depth		
RB-2PW8	18.00	20.00	18.00	8U	14.00	19.00	18.00	200 lbs	WRCM8U4BK
RB-2PW12	28.50	20.00	18.00	12U	21.00	19.00	18.00	200 lbs	WRCM12U4BK
RB-2PW20	40.00	20.00	18.00	20U	35.00	19.00	18.00	175 lbs	WRCM20U4BK

Optional Extender Bracket

Part No.	Description
RB-2PW-EXT	Provides additional seven inches of mounting depth (18" to 25") while maintaining weight load capacity.

What's Inside the Box

Qty Included	Description	Replacement Part No.
1	Pair of Rack Rails	URR8U, URR12U, or URR20U
2	Top and Bottom Cover/Wall Brackets	
1	Assembly Instructions	
8	1/4-20 x 0.5in Screw For Assembly	
8	1/4-20 Kep Nut For Assembly	
8	10-32 x 0.75in Rack Screws For Assembly	SCREW1032-10
25	10-32 x 0.75in Rack Mounting Screws	SCREW1032-25

Swap Your Rails for a Different Height

Replace with Part No.	URR Rack Units	RB-2PW Rack Units
URR8U	8U	4U
URR10U	10U	6U
URR12U	12U	8U
URR14U	14U	10U
URR18U	18U	14U
URR21U	21U	17U

Data subject to change without notice

© 2026. Hammond Manufacturing Ltd. All rights reserved.