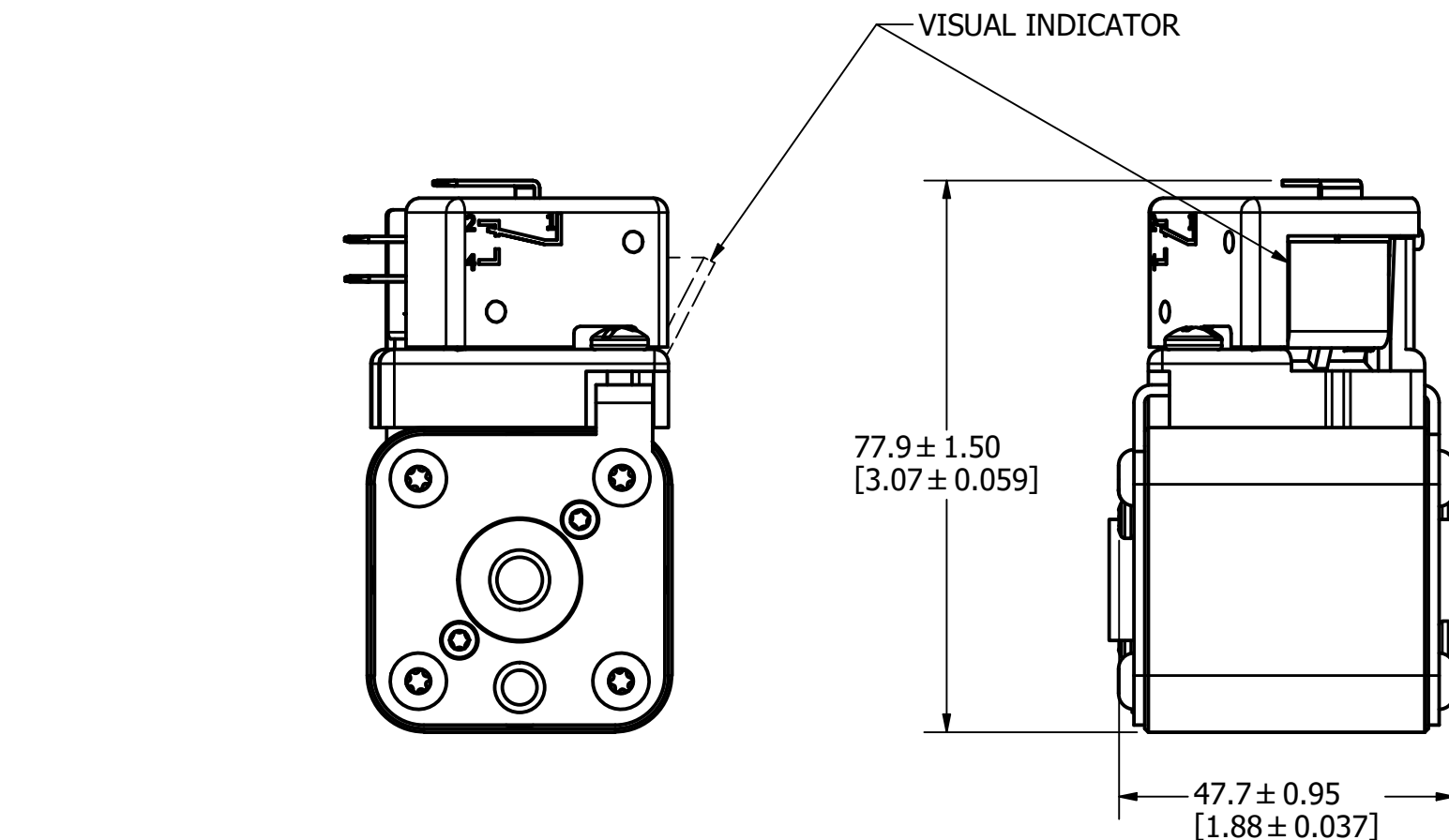
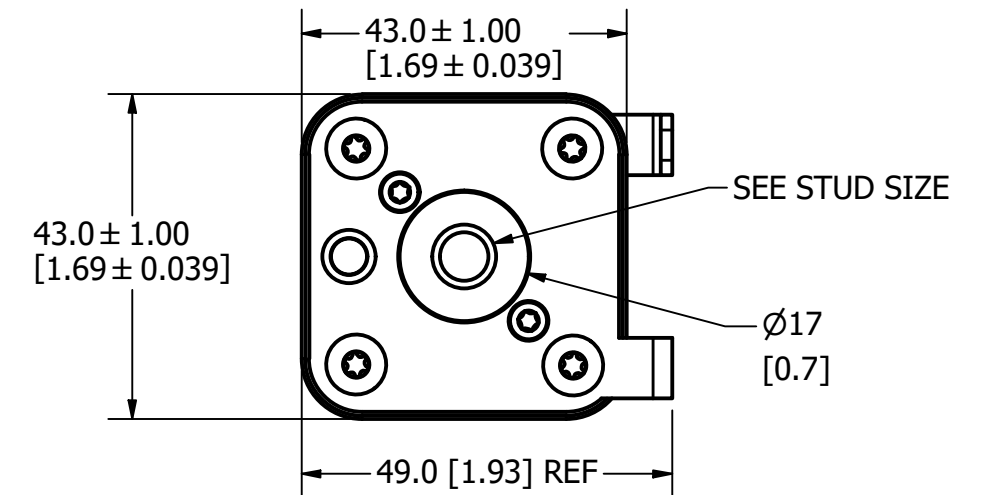
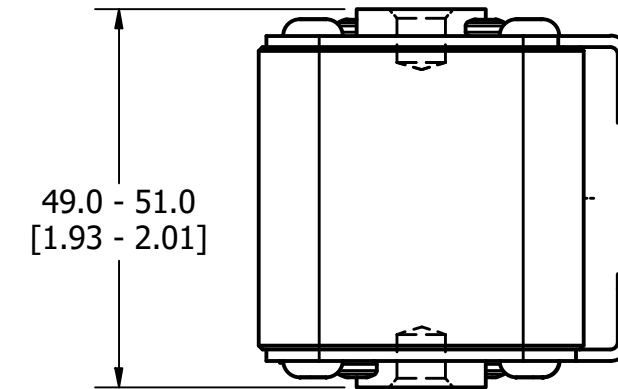
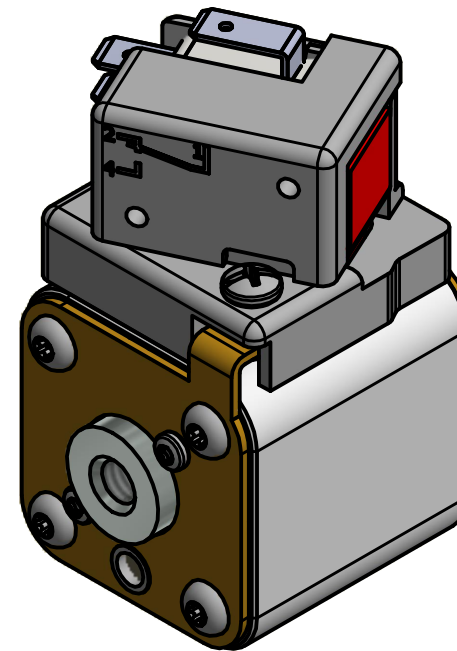
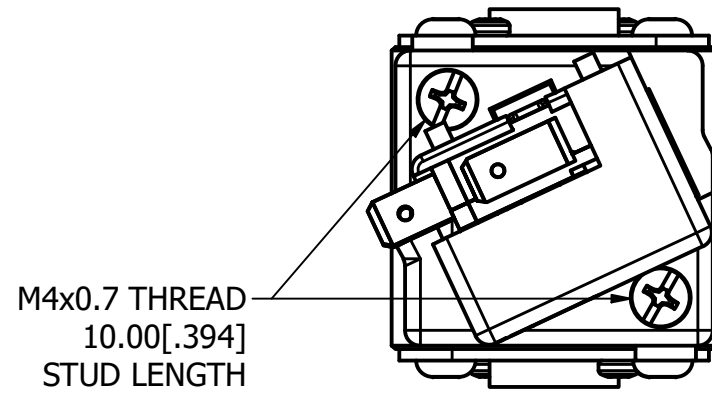


**MOUNTING SPECS:**

STUD SIZE: 5/16-18 UNC-2B  $\nabla$  6.0[0.24]

STUD TORQUE: 13-20Nm

| REVISION |            |   |
|----------|------------|---|
| REV      | DATE       | DESCRIPTION                                     |
| A        | 03/16/2017 | 517373GCP - RELEASED -TV                        |
| B        | 10/19/2017 | 518344ECP - REVISE MOUNTING SPEC NOTES -TV      |
| C        | 8/30/18    | 519782ECP/D - CHG STUD TORQUE MRY               |
| D        | 5/5/22     | 525159ECP/D - CHANGE HEIGHT, ADD TOLERANCES MRY |
| E        | 5/19/22    | 525232ECP/D - UPDATE LENGTH DIMENSION MRY       |



FUSE WITH MICROSWITCH

|     |  |
|-----|--|
| ●   | DENOTES CRITICAL CHARACTERISTICS.  |
| CPK | DENOTES CPK DIMENSIONS, -MINIMUM CPK VALUE   |
| ⊳   | DENOTES A CHARACTERISTIC THAT PROVIDES AN INDICATION OF PROCESS PERFORMANCE. PROCEDURE FOR MEASUREMENT AND TRACKING TO BE DEFINED IN LITTELFUSE INSPECTION INSTRUCTIONS. |
| CP  | DENOTES CP DIMENSIONS, -MINIMUM CP VALUE MUST BE WITHIN THE DIMENSIONAL LIMITATIONS SHOWN ON DRAWING AND INITIALLY LOCATED TO ALLOW FOR MAXIMUM TOOL LIFE.               |

**B**

|                 |                   |              |                               |
|-----------------|-------------------|--------------|-------------------------------|
| MATL SPEC       |                   | FINISH       |                               |
| DRW<br>TVESELSK | DATE<br>11/6/2013 | SCALE<br>NTS | FINISH GOOD WT<br>GRAMS/PIECE |

UNLESS OTHERWISE SPECIFIED, DIMENSIONS ARE IN MILLIMETERS, DIMENSIONS IN BRACKETS [ ] ARE INCHES DIMENSIONING AND DO NOT INCLUDE PLATING. TOLERANCING TO BE INTERPRETED IN ACCORDANCE WITH ANSI Y14.5M-1994

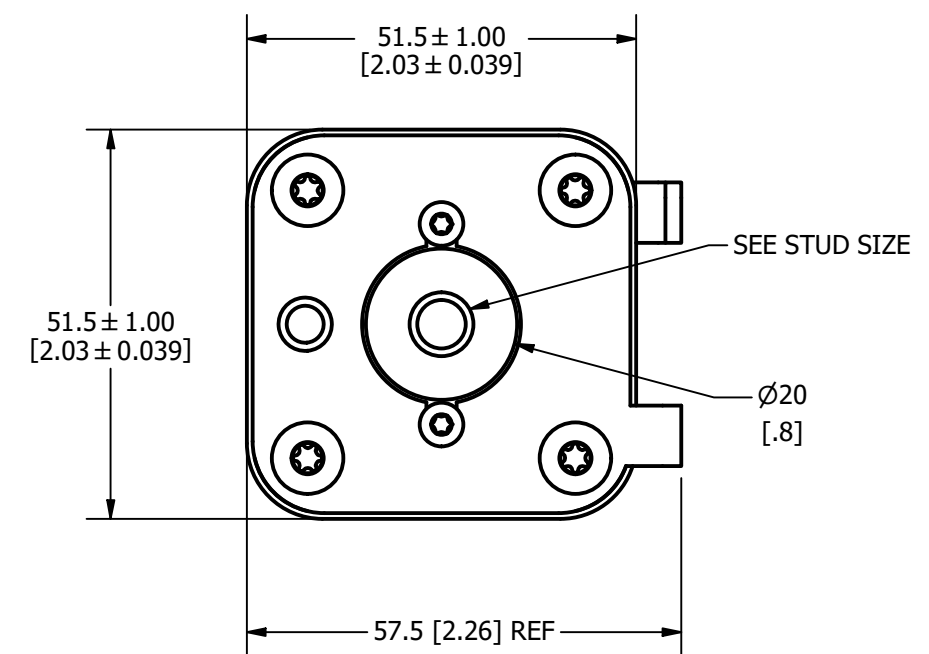
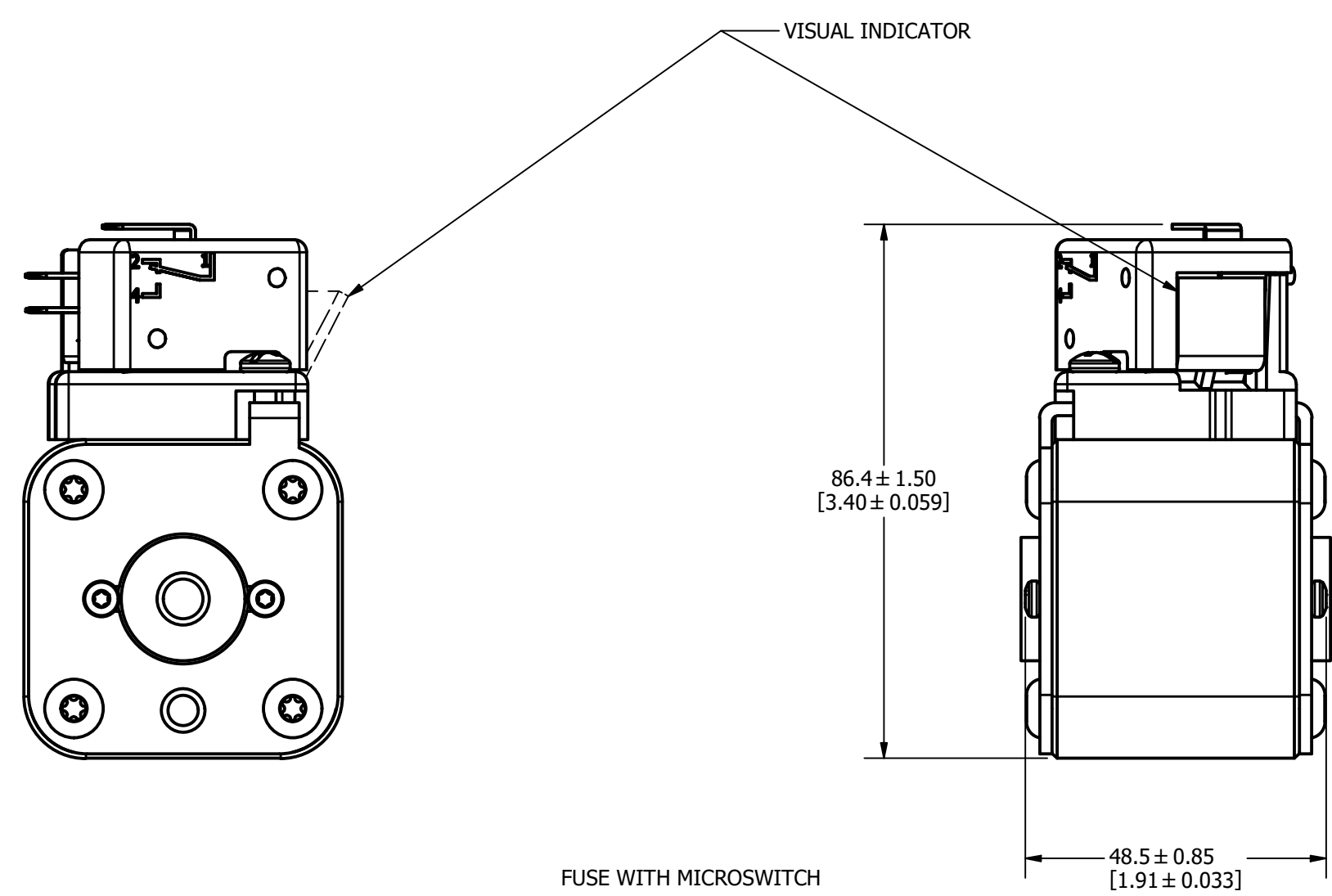
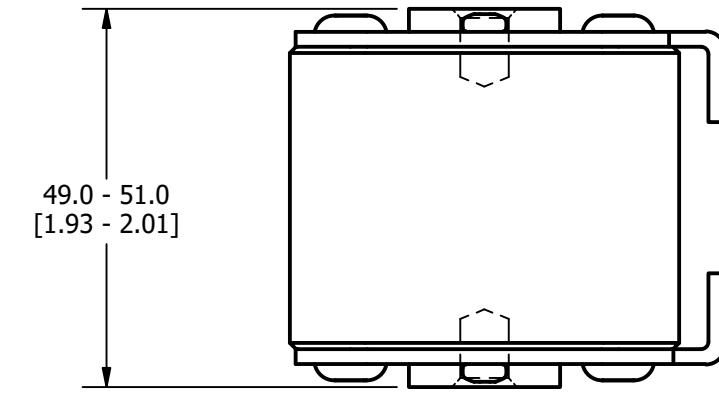
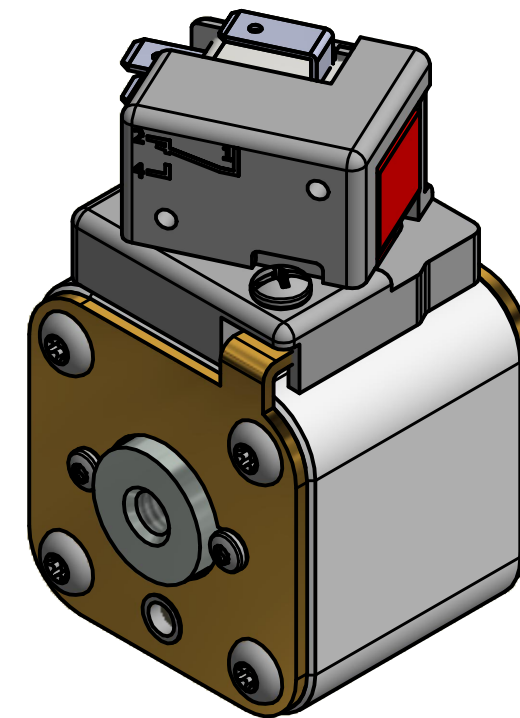
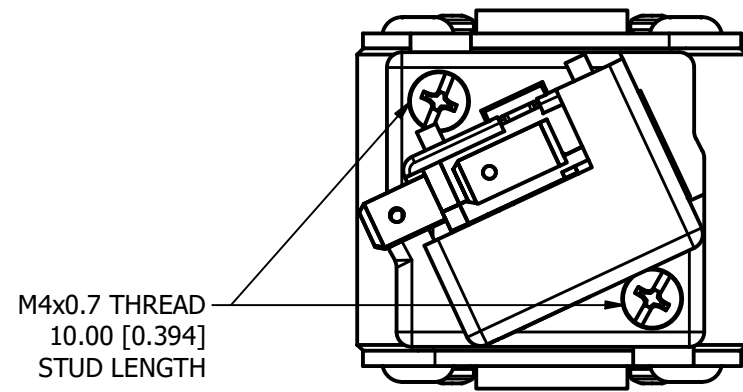
|                      |  |
|----------------------|--|
| 3RD ANGLE PROJECTION |  |
|----------------------|--|

**TITLE** SQUARE BODY 30 CASE SIZE - ENGLISH THREAD OUTLINE

|  |                      |                                    |              |
|--|----------------------|------------------------------------|--------------|
| <b>Littelfuse</b><br>CHICAGO, ILLINOIS 60631 | REVISION<br><b>E</b> | DRWG NO.<br><b>OL-PSR030FS0000</b> | SHEET 1 OF 1 |
|--|----------------------|------------------------------------|--------------|

MOUNTING SPECS:  
 STUD SIZE: 5/16-18 UNC-2B  $\nabla$  8.0[0.31]  
 STUD TORQUE: 13-20Nm

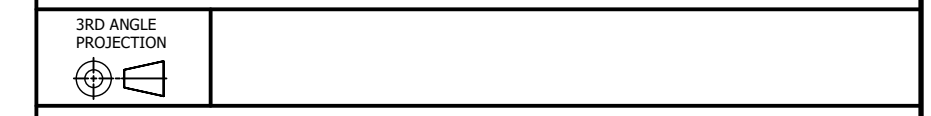
| REVISION |            |   |
|----------|------------|---|
| REV      | DATE       | DESCRIPTION                                     |
| A        | 08/11/2017 | 518016GCP - RELEASED -TV                        |
| B        | 10/19/2017 | 518344ECP - REVISE MOUNTING SPEC NOTES -TV      |
| C        | 8/30/18    | 519782ECP/D - CHG STUD TORQUE MRY               |
| D        | 5/5/22     | 525159ECP/D - CHANGE HEIGHT, ADD TOLERANCES MRY |
| E        | 5/19/22    | 525232ECP/D - UPDATE LENGTH DIMENSION MRY       |



|      |  |
|------|--|
| ●    | DENOTES CRITICAL CHARACTERISTICS.  |
| CPK  | DENOTES CPK DIMENSIONS, -MINIMUM CPK VALUE   |
| (ST) | DENOTES A CHARACTERISTIC THAT PROVIDES AN INDICATION OF PROCESS PERFORMANCE. PROCEDURE FOR MEASUREMENT AND TRACKING TO BE DEFINED IN LITTELFUSE INSPECTION INSTRUCTIONS. |
| CP   | DENOTES CP DIMENSIONS, -MINIMUM CP VALUE MUST BE WITHIN THE DIMENSIONAL LIMITATIONS SHOWN ON DRAWING AND INITIALLY LOCATED TO ALLOW FOR MAXIMUM TOOL LIFE.               |

| MATL SPEC    | FINISH                     |
|--------------|----------------------------|
| DRW TVESELSK | DATE 6/30/2017             |
| SCALE NTS    | FINISH GOOD WT GRAMS/PIECE |

UNLESS OTHERWISE SPECIFIED, DIMENSIONS ARE IN MILLIMETERS, DIMENSIONS IN BRACKETS [ ] ARE INCHES DIMENSIONING AND DO NOT INCLUDE PLATING. TOLERANCING TO BE INTERPRETED IN ACCORDANCE WITH ANSI Y14.5M-1994



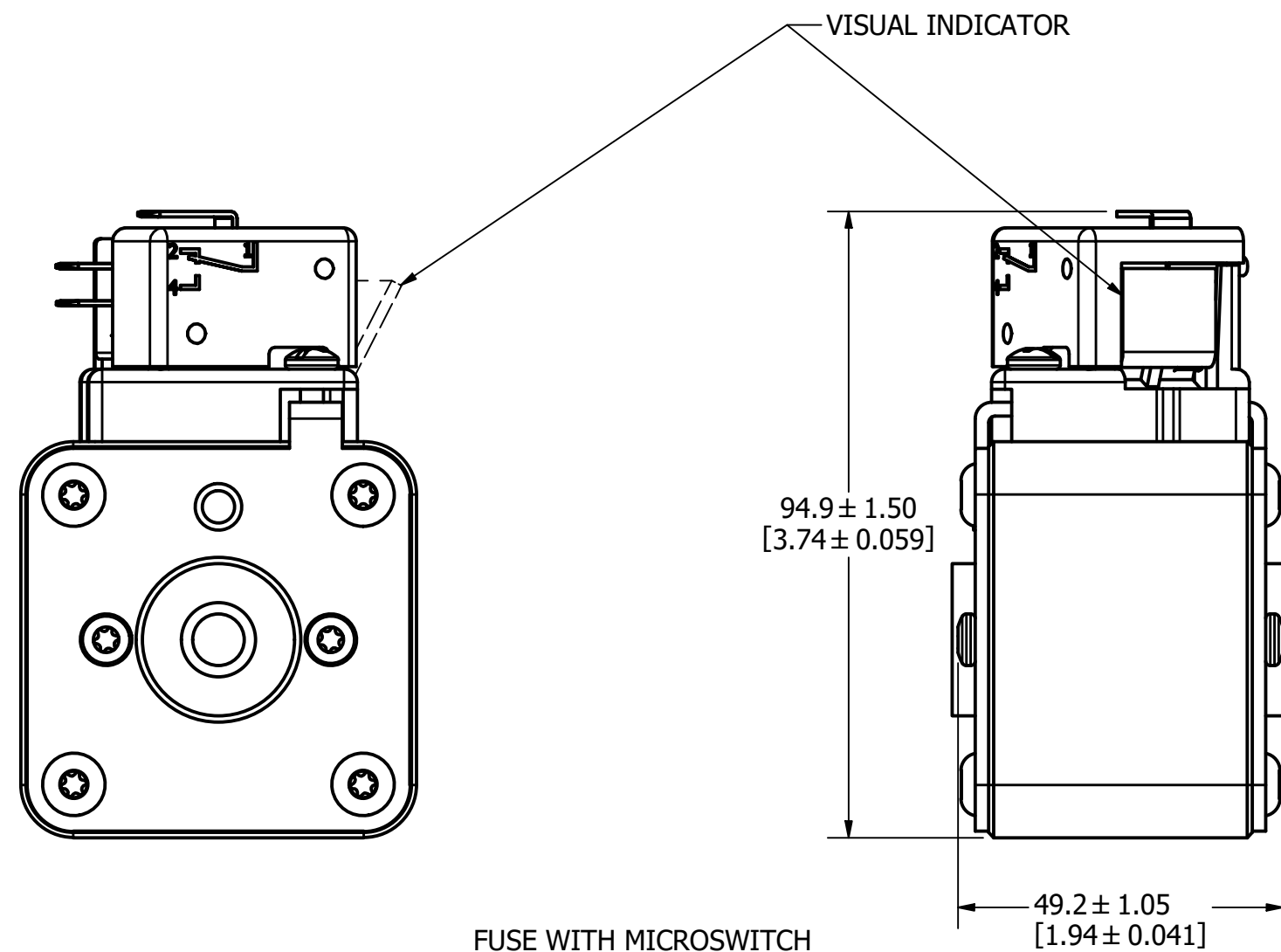
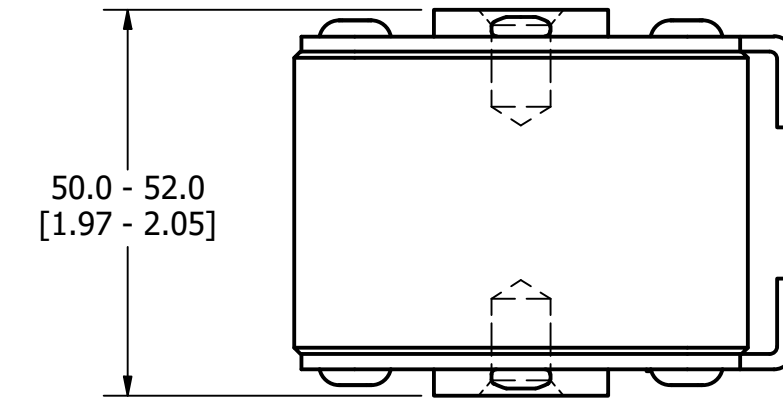
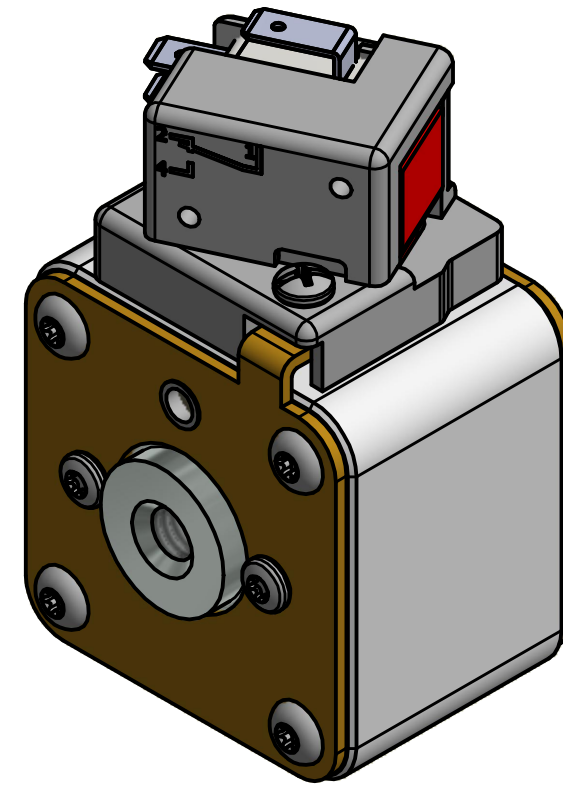
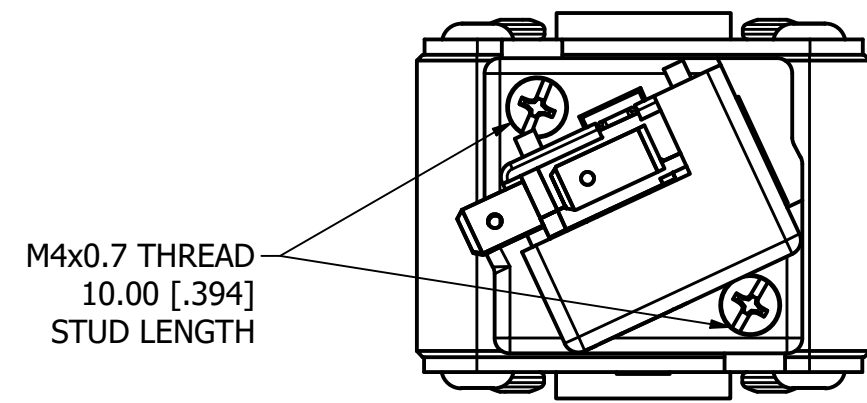
TITLE SQUARE BODY 31 CASE SIZE - ENGLISH THREAD OUTLINE

| REVISION |            |   |
|----------|------------|---|
| REV      | DATE       | DESCRIPTION                                     |
| A        | 03/16/2016 | 518344GCP - RELEASED -TV                        |
| B        | 10/19/2017 | 518344ECP - REVISE MOUNTING SPEC NOTES -TV      |
| C        | 8/30/18    | 519782ECP/D - CHG STUD TORQUE MRY               |
| D        | 5/5/22     | 525159ECP/D - CHANGE HEIGHT, ADD TOLERANCES MRY |
| E        | 5/19/22    | 525232ECP/D - UPDATE LENGTH DIMENSION MRY       |

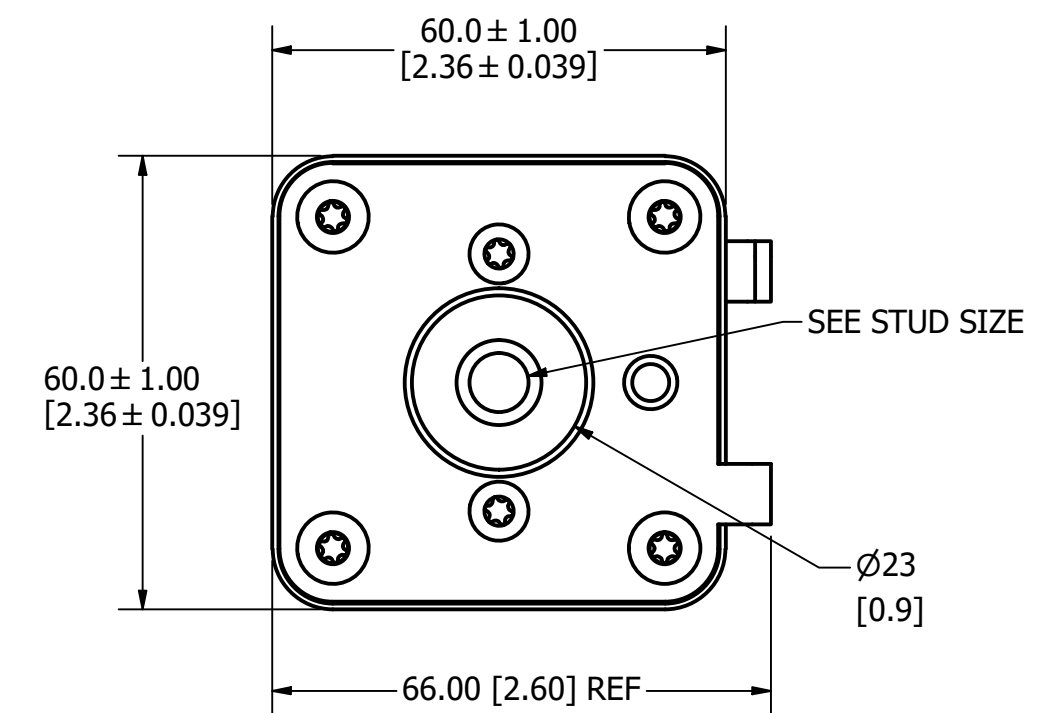
**MOUNTING SPECS:**

STUD SIZE: 3/8-16 UNC-2B  $\nabla$  11.5 [0.45]

STUD TORQUE: 26-35Nm



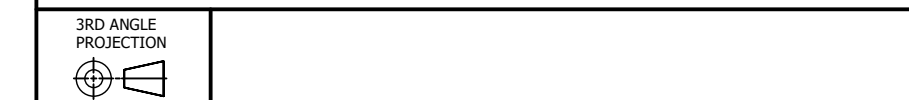
FUSE WITH MICROSWITCH



|      |  |
|------|--|
| ●    | DENOTES CRITICAL CHARACTERISTICS.  |
| CPK  | DENOTES CPK DIMENSIONS, -MINIMUM CPK VALUE   |
| (ST) | DENOTES A CHARACTERISTIC THAT PROVIDES AN INDICATION OF PROCESS PERFORMANCE. PROCEDURE FOR MEASUREMENT AND TRACKING TO BE DEFINED IN LITTELFUSE INSPECTION INSTRUCTIONS. |
| CP   | DENOTES CP DIMENSIONS, -MINIMUM CP VALUE. MUST BE WITHIN THE DIMENSIONAL LIMITATIONS SHOWN ON DRAWING AND INITIALLY LOCATED TO ALLOW FOR MAXIMUM TOOL LIFE.              |

|           |           |       |                |
|-----------|-----------|-------|----------------|
| MATL SPEC | FINISH    |       |                |
| DRW       | DATE      | SCALE | FINISH GOOD WT |
| TVESELSK  | 11/6/2013 | NTS   | GRAMS/PIECE    |

UNLESS OTHERWISE SPECIFIED, DIMENSIONS ARE IN MILLIMETERS, DIMENSIONS IN BRACKETS [ ] ARE INCHES DIMENSIONING AND DO NOT INCLUDE PLATING. TOLERANCING TO BE INTERPRETED IN ACCORDANCE WITH ANSI Y14.5M-1994



TITLE SQUARE BODY 32 CASE SIZE - ENGLISH THREAD OUTLINE

|  |               |                             |              |
|--|---------------|-----------------------------|--------------|
| <b>Littelfuse</b><br>CHICAGO, ILLINOIS 60631 | REVISION<br>E | DRWG NO.<br>OL-PSR032FS0000 | SHEET 1 OF 1 |
|--|---------------|-----------------------------|--------------|

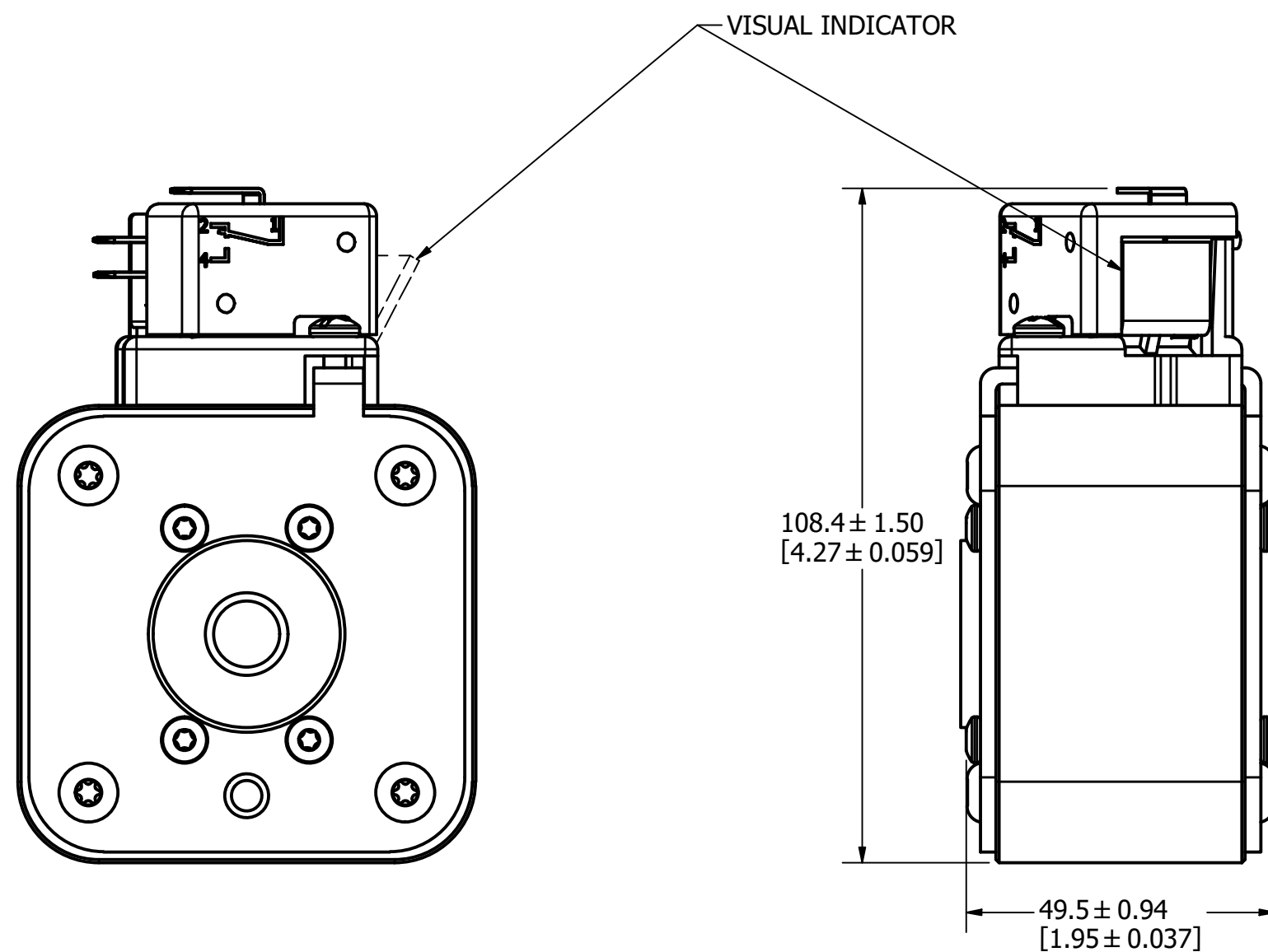
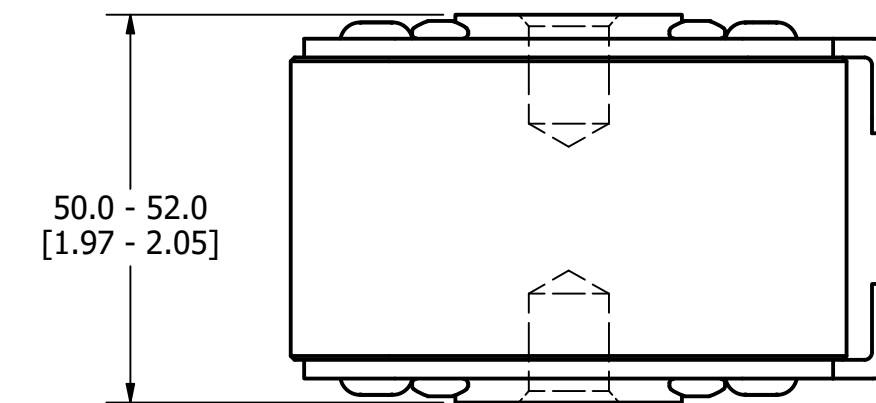
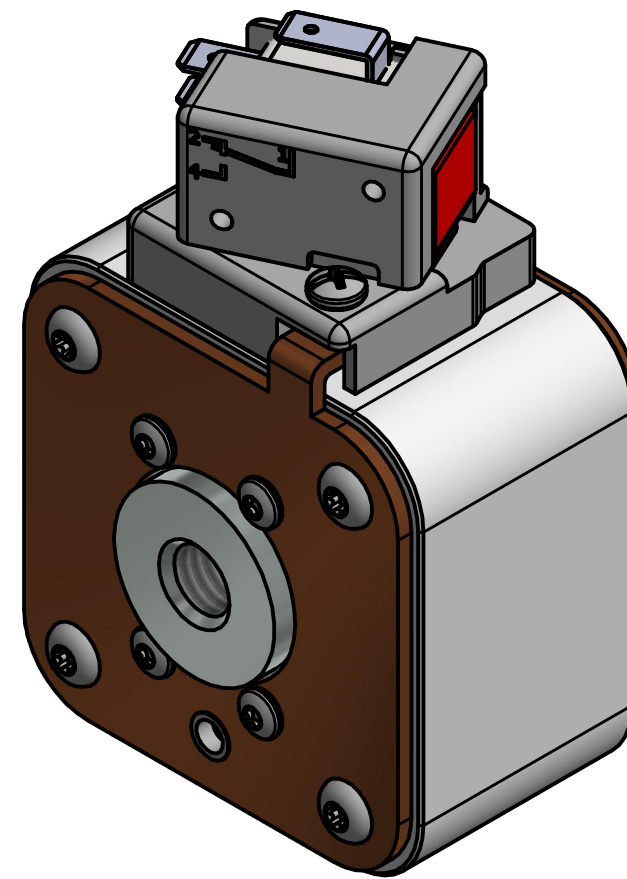
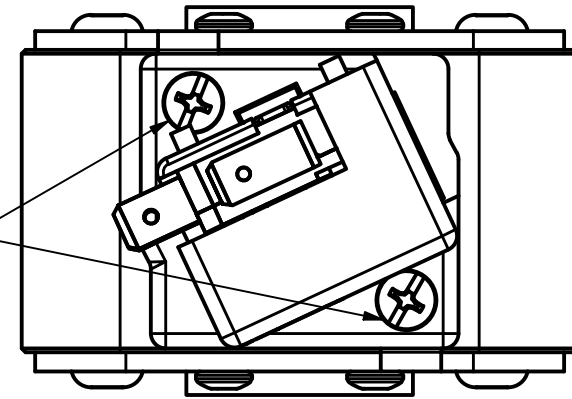
| REVISION |            |   |
|----------|------------|---|
| REV      | DATE       | DESCRIPTION                                     |
| A        | 03/16/2016 | 517373GCP - RELEASED -TV                        |
| B        | 10/19/2017 | 518344ECP - REVISE STUD SIZE NOTES -TV          |
| C        | 8/30/18    | 519782ECP/D - CHG STUD TORQUE MRY               |
| D        | 5/5/22     | 525159ECP/D - CHANGE HEIGHT, ADD TOLERANCES MRY |
| E        | 5/19/22    | 525232ECP/D - UPDATE LENGTH DIMENSION MRY       |

**MOUNTING SPECS:**

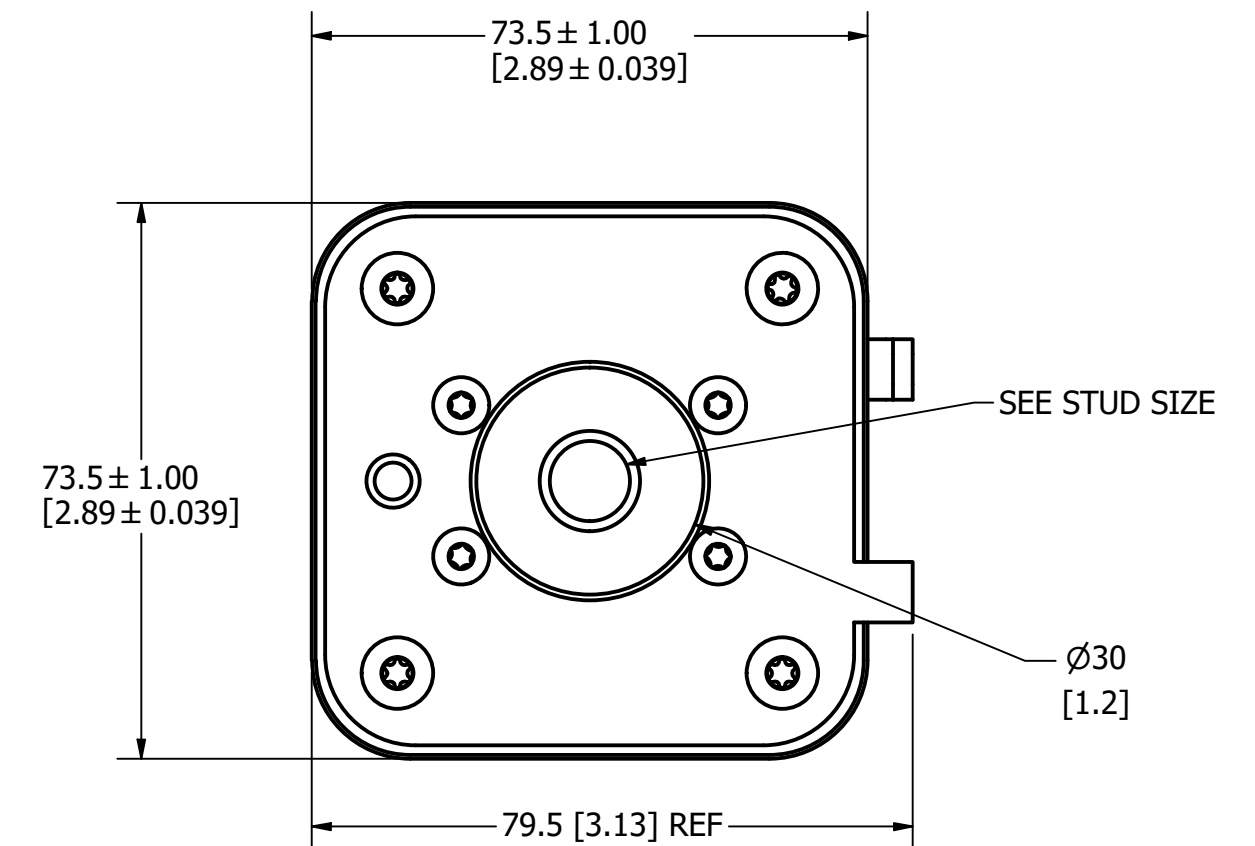
STUD SIZE: 1/2-13 UNC - 2B  $\nabla$ 13.0[0.51]

STUD TORQUE: 45-55Nm

M4x0.7 THREAD  
10.00 [.394]  
STUD LENGTH



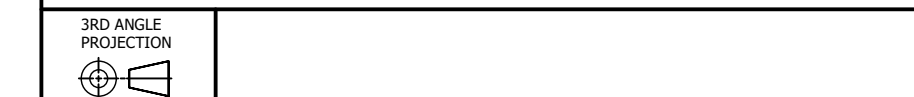
FUSE WITH MICROSWITCH



|      |  |
|------|--|
| ●    | DENOTES CRITICAL CHARACTERISTICS.  |
| CPK  | DENOTES CPK DIMENSIONS, -MINIMUM CPK VALUE   |
| (ST) | DENOTES A CHARACTERISTIC THAT PROVIDES AN INDICATION OF PROCESS PERFORMANCE. PROCEDURE FOR MEASUREMENT AND TRACKING TO BE DEFINED IN LITTELFUSE INSPECTION INSTRUCTIONS. |
| CP   | DENOTES CP DIMENSIONS, -MINIMUM CP VALUE MUST BE WITHIN THE DIMENSIONAL LIMITATIONS SHOWN ON DRAWING AND INITIALLY LOCATED TO ALLOW FOR MAXIMUM TOOL LIFE.               |

|              |                |           |                            |
|--------------|----------------|-----------|----------------------------|
| MATL SPEC    | FINISH         |           |                            |
| DRW TVESELSK | DATE 11/6/2013 | SCALE NTS | FINISH GOOD WT GRAMS/PIECE |

UNLESS OTHERWISE SPECIFIED, DIMENSIONS ARE IN MILLIMETERS, DIMENSIONS IN BRACKETS [ ] ARE INCHES DIMENSIONING AND DO NOT INCLUDE PLATING. TOLERANCING TO BE INTERPRETED IN ACCORDANCE WITH ANSI Y14.5M-1994



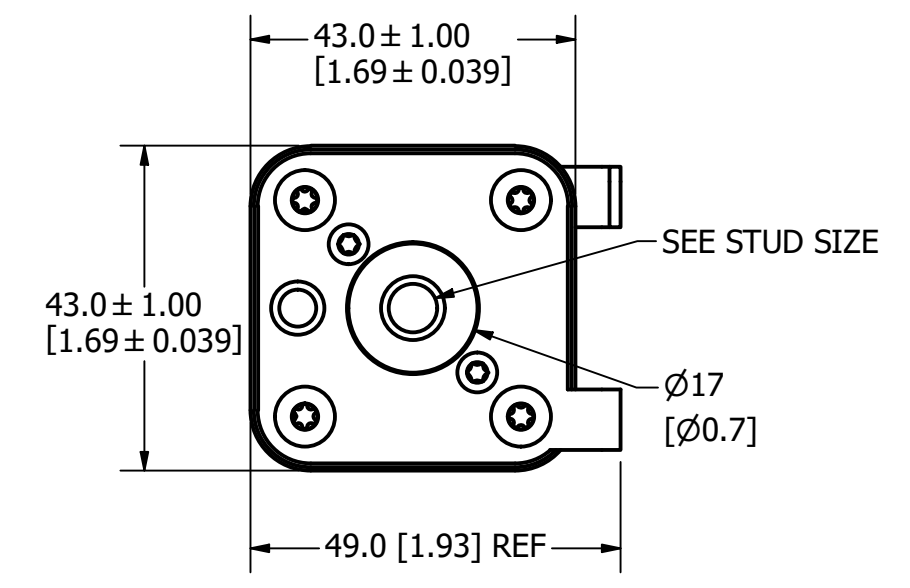
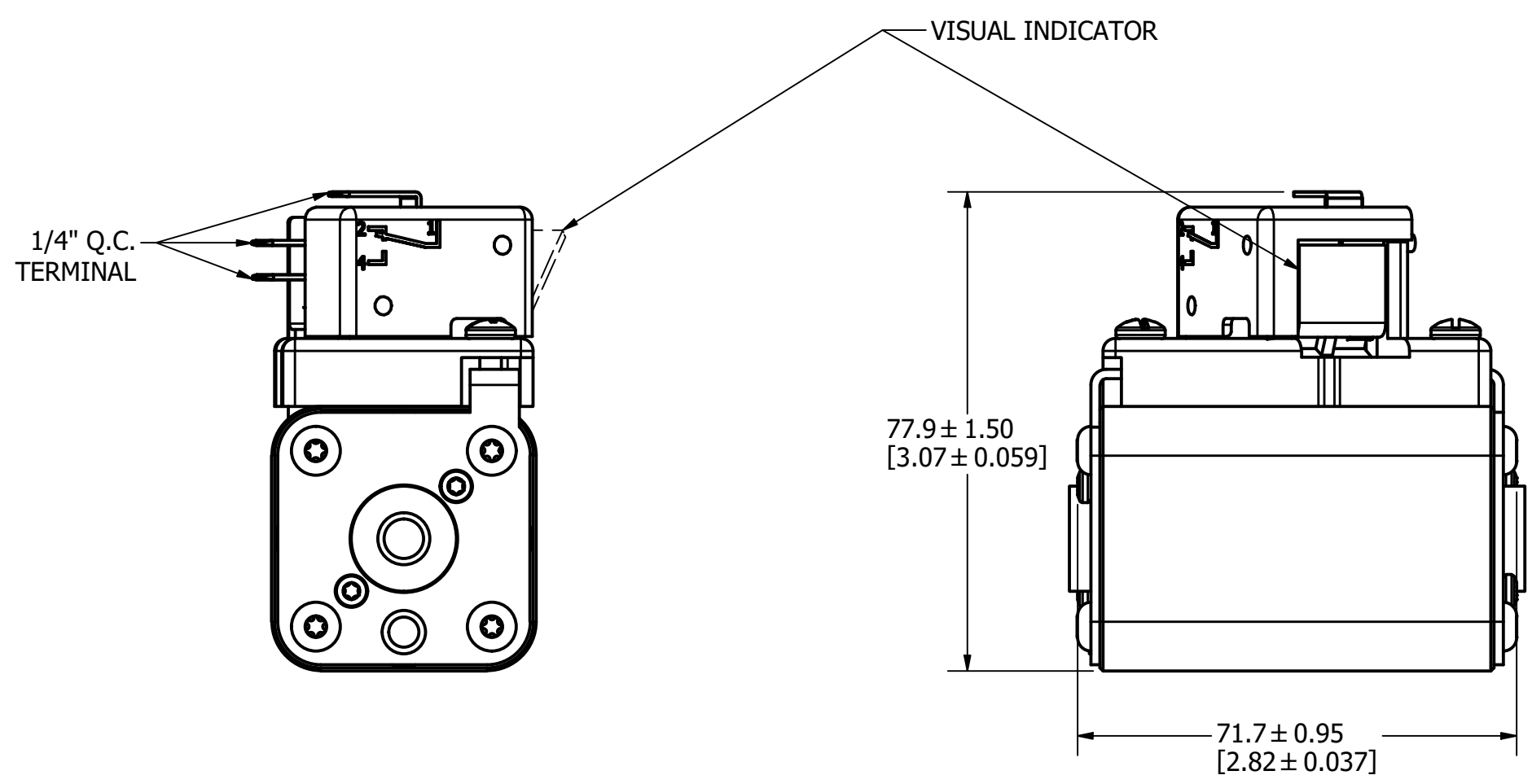
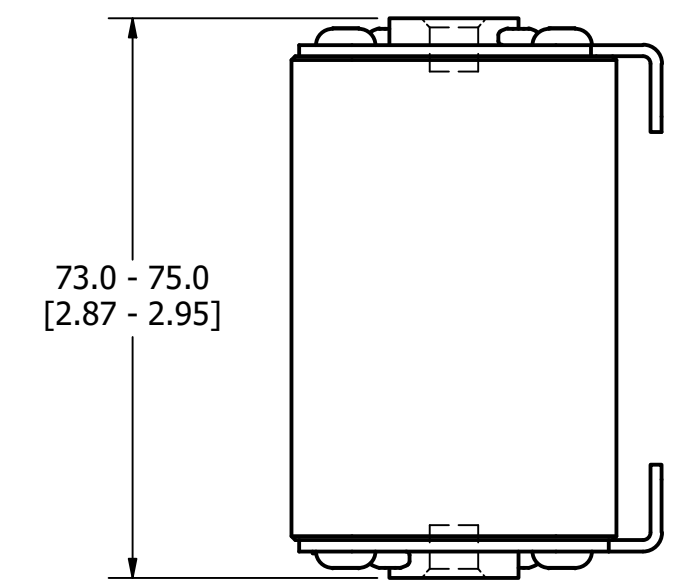
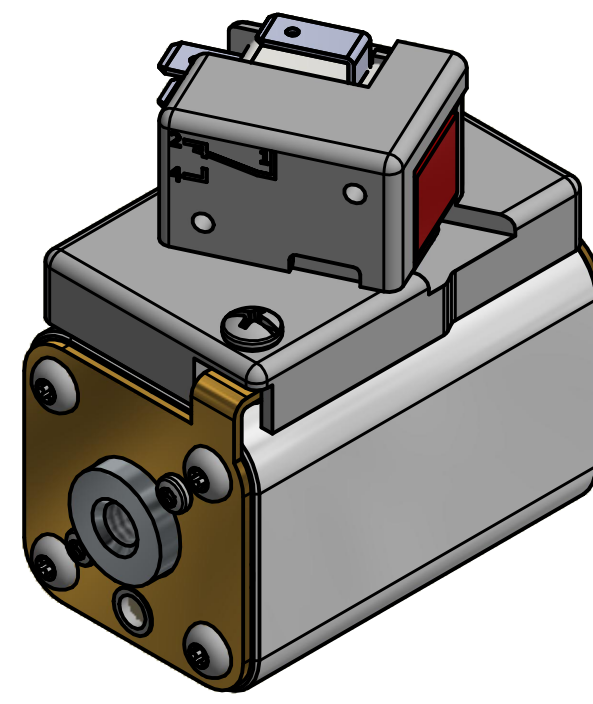
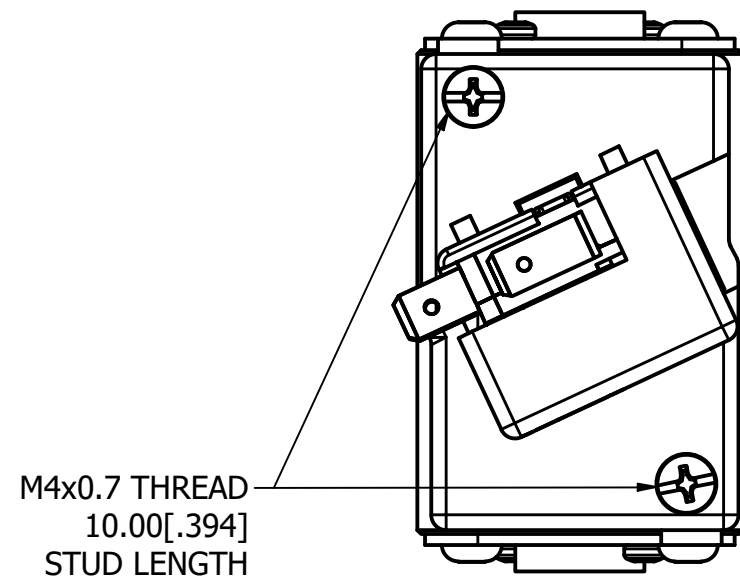
TITLE SQUARE BODY 33 CASE SIZE - ENGLISH THREAD OUTLINE

| REVISION |            |   |
|----------|------------|---|
| REV      | DATE       | DESCRIPTION                                     |
| A        | 01/10/2018 | 518685GCP - RELEASED -TV                        |
| B        | 8/30/18    | 519782ECP/D - CHG STUD TORQUE MRY               |
| C        | 5/5/22     | 525161ECP/D - CHANGE HEIGHT, ADD TOLERANCES MRY |
| D        | 5/19/22    | 525232ECP/D - UPDATE LENGTH DIMENSION MRY       |

MOUNTING SPECS

STUD SIZE: 5/16-18 UNC-2B  $\nabla$  6.0 [0.24]

STUD TORQUE: 13-20Nm



FUSE WITH MICROSWITCH

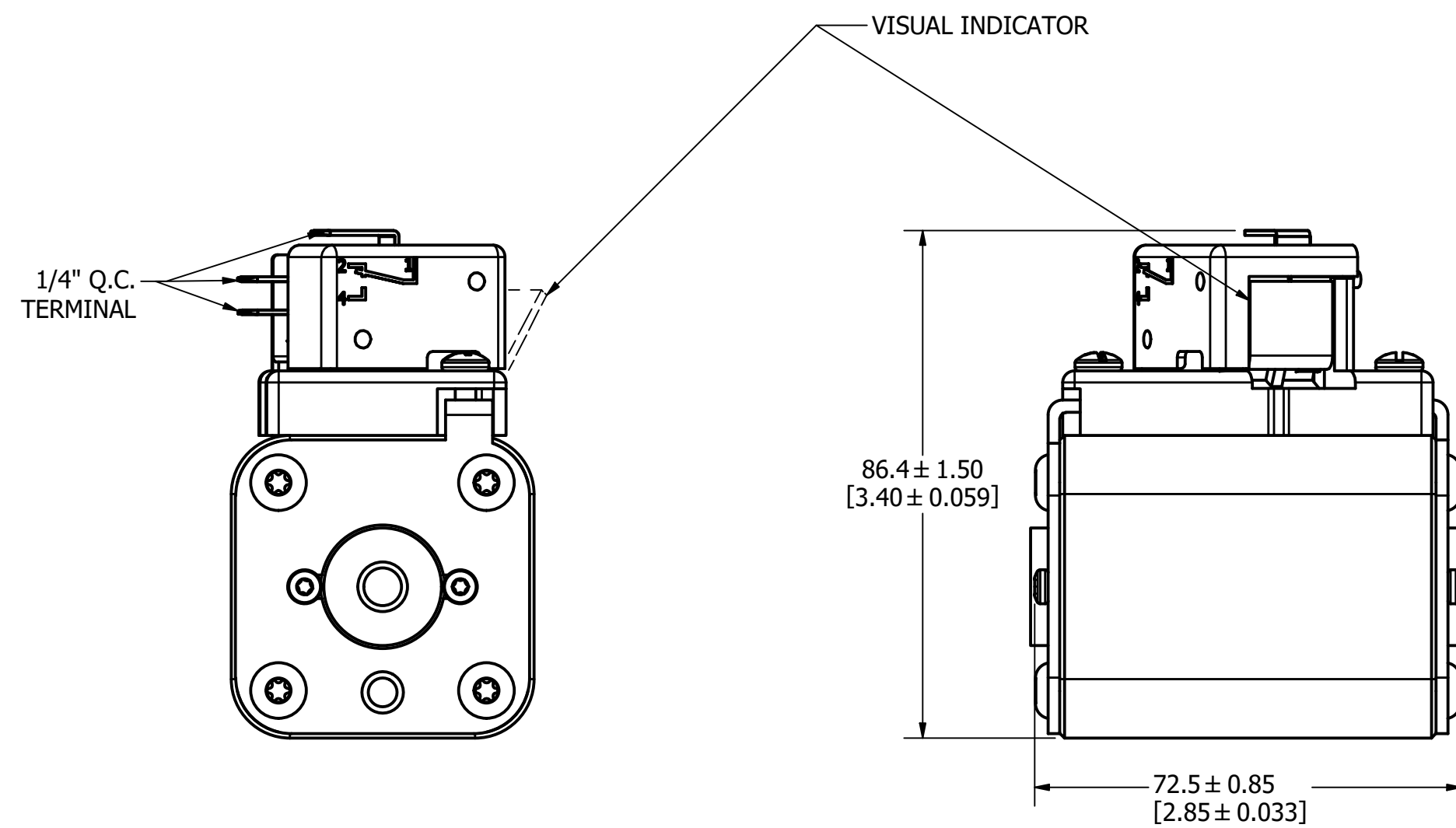
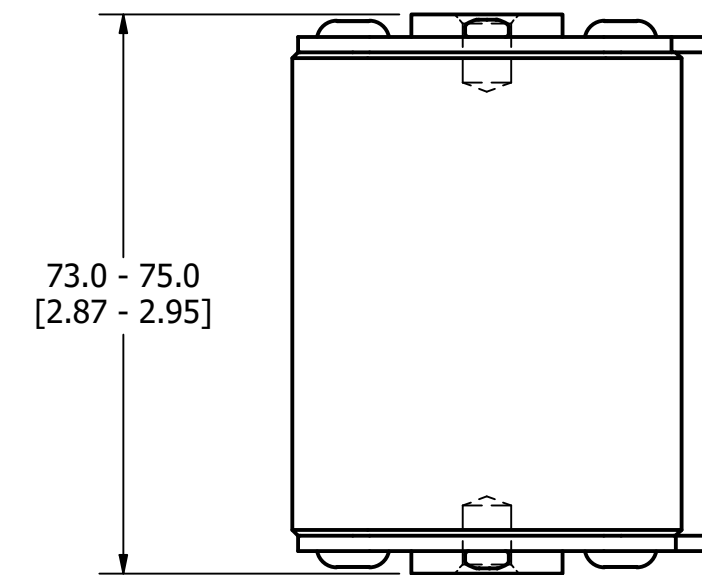
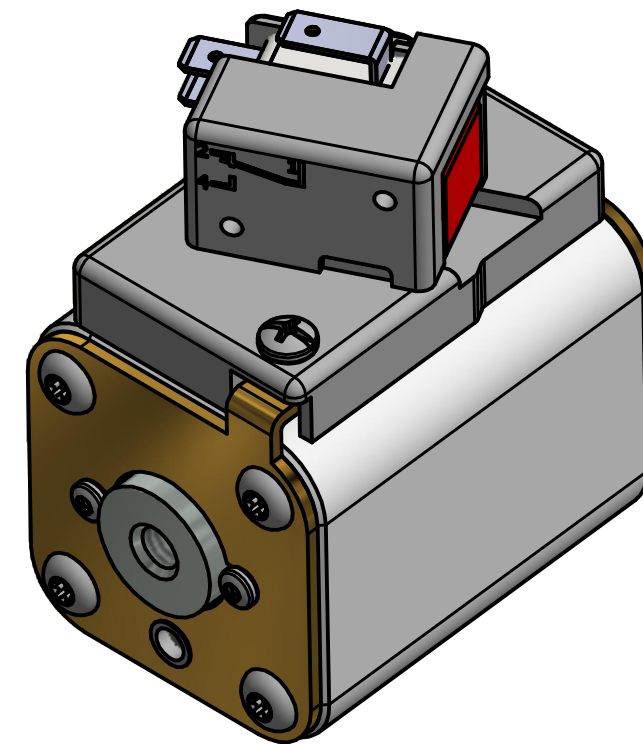
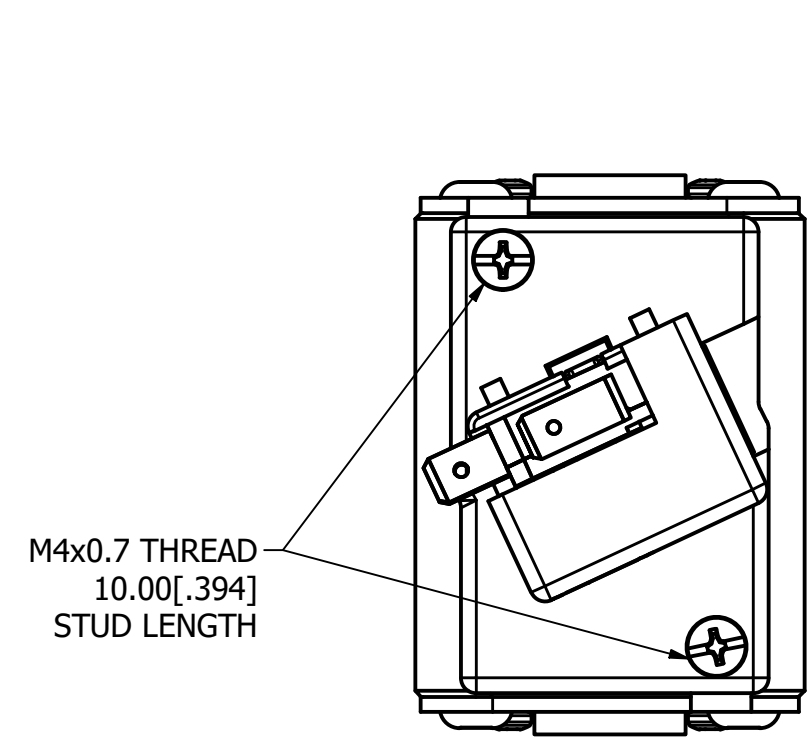
|   |  |              |                            |
|---|--|--------------|----------------------------|
| ●   | DENOTES CRITICAL CHARACTERISTICS.  |              |                            |
| CPK   | DENOTES CPK DIMENSIONS, -MINIMUM CPK VALUE   |              |                            |
| (ST)  | DENOTES A CHARACTERISTIC THAT PROVIDES AN INDICATION OF PROCESS PERFORMANCE. PROCEDURE FOR MEASUREMENT AND TRACKING TO BE DEFINED IN LITTELFUSE INSPECTION INSTRUCTIONS. |              |                            |
| CP  | DENOTES CP DIMENSIONS, -MINIMUM CP VALUE MUST BE WITHIN THE DIMENSIONAL LIMITATIONS SHOWN ON DRAWING AND INITIALLY LOCATED TO ALLOW FOR MAXIMUM TOOL LIFE.               |              |                            |
| MATL SPEC   | FINISH   |              |                            |
| DRW TVESELSK  | DATE 11/6/2013   | SCALE NTS    | FINISH GOOD WT GRAMS/PIECE |
| UNLESS OTHERWISE SPECIFIED, DIMENSIONS ARE IN MILLIMETERS, DIMENSIONS IN BRACKETS [ ] ARE INCHES DIMENSIONING AND DO NOT INCLUDE PLATING. TOLERANCING TO BE INTERPRETED IN ACCORDANCE WITH ANSI Y14.5M-1994 |  |              |                            |
| 3RD ANGLE PROJECTION  |  |              |                            |
| TITLE SQUARE BODY 70 CASE SIZE - ENGLISH THREAD OUTLINE   |  |              |                            |
|   |  | REVISION D   | DRWG NO. OL-PSR070FS0000   |
| CHICAGO, ILLINOIS 60631   |  | SHEET 1 OF 1 |                            |

| REVISION |            |   |
|----------|------------|---|
| REV      | DATE       | DESCRIPTION                                     |
| A        | 03/16/2016 | 518344GCP - RELEASED -TV                        |
| B        | 10/19/2017 | 518344ECP - REVISE MOUNTING SPEC NOTES -TV      |
| C        | 8/30/18    | 519782ECP/D - CHG STUD TORQUE MRY               |
| D        | 5/5/22     | 525161ECP/D - CHANGE HEIGHT, ADD TOLERANCES MRY |
| E        | 5/19/22    | 525232ECP/D - UPDATE LENGTH DIMENSION MRY       |

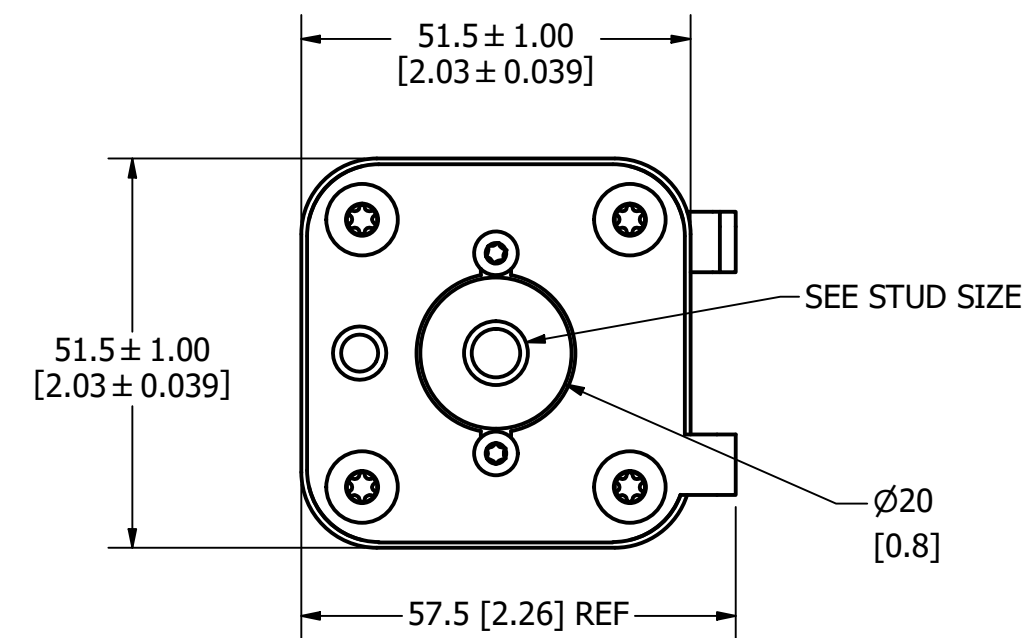
**MOUNTING SPECS**

STUD SIZE: 5/16-18 UNC-2B  $\nabla$  8.0[0.31]

STUD TORQUE: 13-20Nm



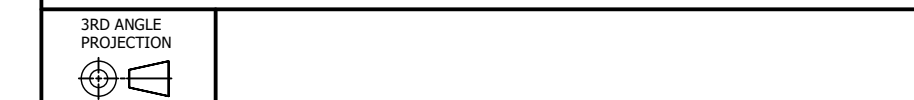
FUSE WITH MICROSWITCH



|      |  |
|------|--|
| ●    | DENOTES CRITICAL CHARACTERISTICS.  |
| CPK  | DENOTES CPK DIMENSIONS, -MINIMUM CPK VALUE   |
| (ST) | DENOTES A CHARACTERISTIC THAT PROVIDES AN INDICATION OF PROCESS PERFORMANCE. PROCEDURE FOR MEASUREMENT AND TRACKING TO BE DEFINED IN LITTELFUSE INSPECTION INSTRUCTIONS. |
| CP   | DENOTES CP DIMENSIONS, -MINIMUM CP VALUE MUST BE WITHIN THE DIMENSIONAL LIMITATIONS SHOWN ON DRAWING AND INITIALLY LOCATED TO ALLOW FOR MAXIMUM TOOL LIFE.               |

|              |                |           |                            |
|--------------|----------------|-----------|----------------------------|
| MATL SPEC    | FINISH         |           |                            |
| DRW TVESELSK | DATE 11/6/2013 | SCALE NTS | FINISH GOOD WT GRAMS/PIECE |

UNLESS OTHERWISE SPECIFIED, DIMENSIONS ARE IN MILLIMETERS, DIMENSIONS IN BRACKETS [ ] ARE INCHES DIMENSIONING AND DO NOT INCLUDE PLATING. TOLERANCING TO BE INTERPRETED IN ACCORDANCE WITH ANSI Y14.5M-1994



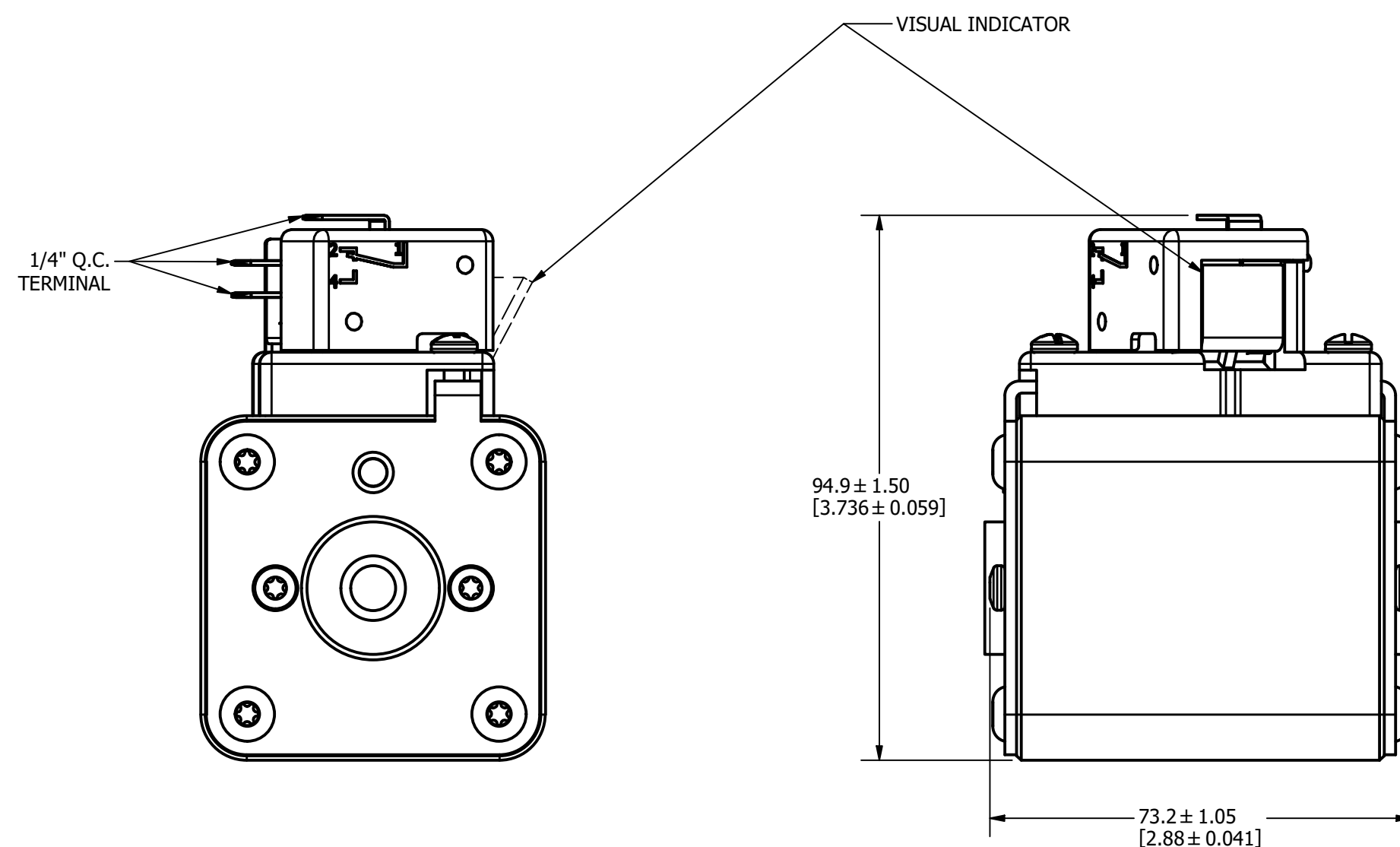
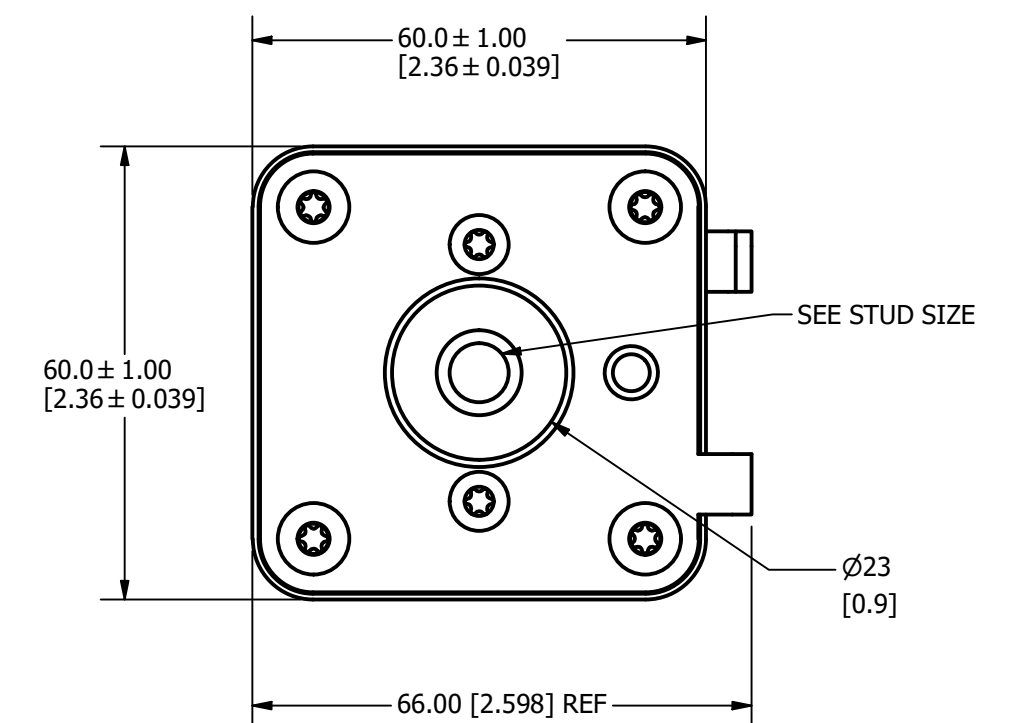
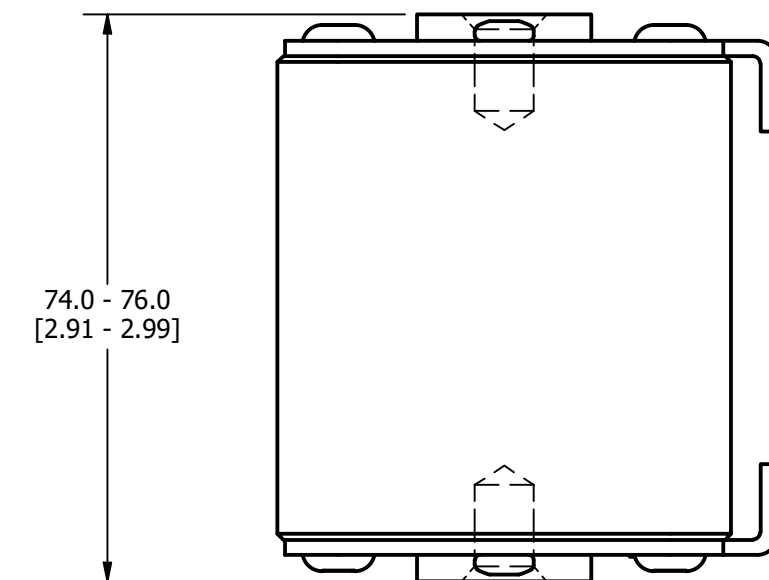
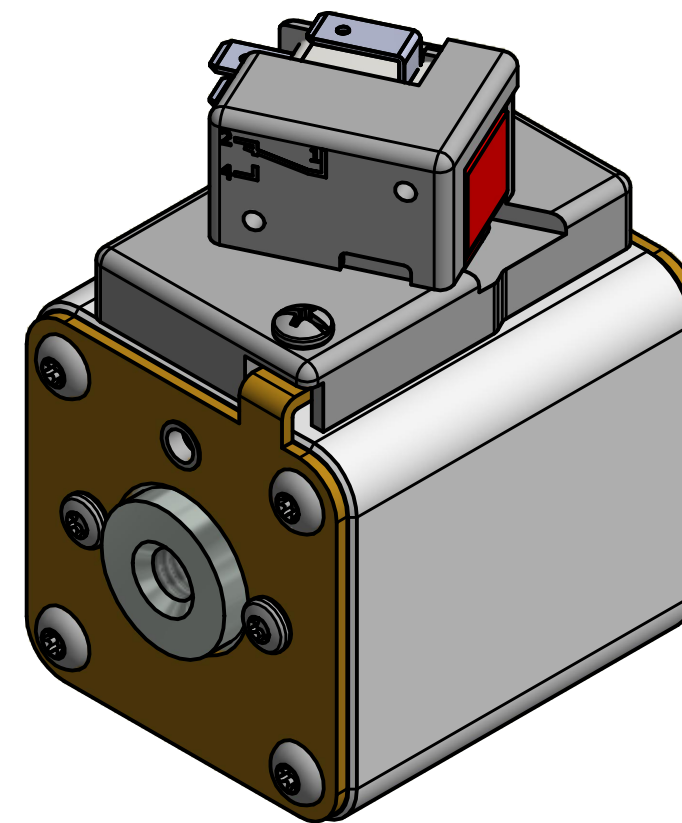
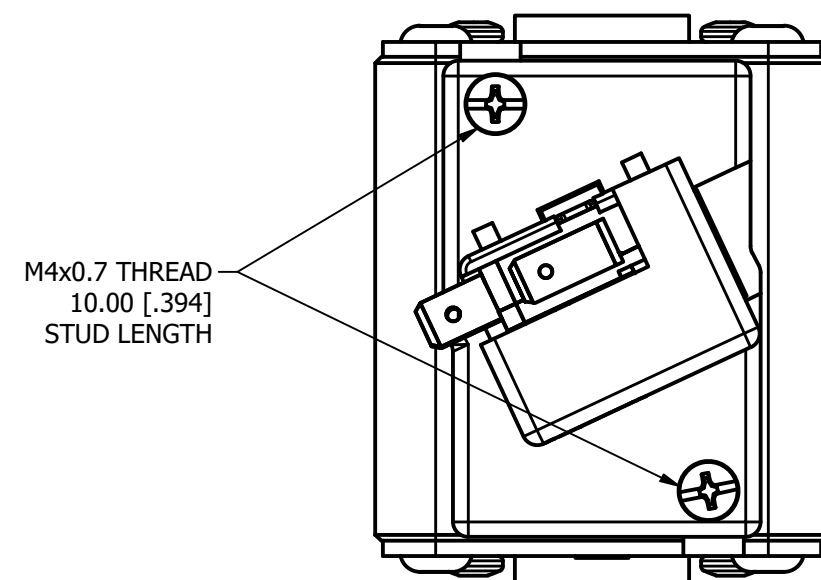
TITLE SQUARE BODY 71 CASE SIZE - ENGLISH THREAD OUTLINE

| REVISION |            |   |
|----------|------------|---|
| REV      | DATE       | DESCRIPTION                                     |
| A        | 03/16/2016 | 517373GCP - RELEASED -TV                        |
| B        | 10/19/2017 | 518344ECP - REVISE STUD SIZE NOTES -TV          |
| C        | 8/30/18    | 519782ECP/D - CHG STUD TORQUE MRY               |
| D        | 5/5/22     | 525161ECP/D - CHANGE HEIGHT, ADD TOLERANCES MRY |
| E        | 5/19/22    | 525232ECP/D - UPDATE LENGTH DIMENSION MRY       |

**MOUNTING SPECS:**

STUD SIZE: 3/8-16 UNC-2B  $\nabla$ 11.5[0.45]

STUD TORQUE: 26-35Nm

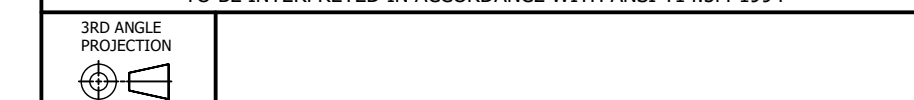


FUSE WITH MICROSWITCH

|      |  |
|------|--|
| ●    | DENOTES CRITICAL CHARACTERISTICS.  |
| CPK  | DENOTES CPK DIMENSIONS, -MINIMUM CPK VALUE   |
| (ST) | DENOTES A CHARACTERISTIC THAT PROVIDES AN INDICATION OF PROCESS PERFORMANCE. PROCEDURE FOR MEASUREMENT AND TRACKING TO BE DEFINED IN LITTELFUSE INSPECTION INSTRUCTIONS. |
| CP   | DENOTES CP DIMENSIONS, -MINIMUM CP VALUE MUST BE WITHIN THE DIMENSIONAL LIMITATIONS SHOWN ON DRAWING AND INITIALLY LOCATED TO ALLOW FOR MAXIMUM TOOL LIFE.               |

|              |                |           |                            |
|--------------|----------------|-----------|----------------------------|
| MATL SPEC    | FINISH         |           |                            |
| DRW TVESELSK | DATE 2/15/2016 | SCALE NTS | FINISH GOOD WT GRAMS/PIECE |

UNLESS OTHERWISE SPECIFIED, DIMENSIONS ARE IN MILLIMETERS, DIMENSIONS IN BRACKETS [ ] ARE INCHES DIMENSIONING AND DO NOT INCLUDE PLATING. TOLERANCING TO BE INTERPRETED IN ACCORDANCE WITH ANSI Y14.5M-1994



TITLE SQUARE BODY 72 CASE SIZE - ENGLISH THREAD OUTLINE

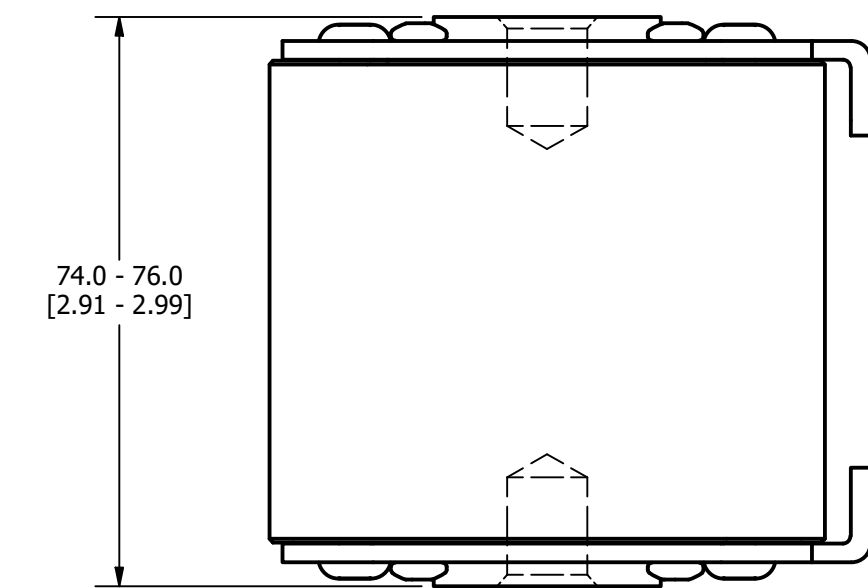
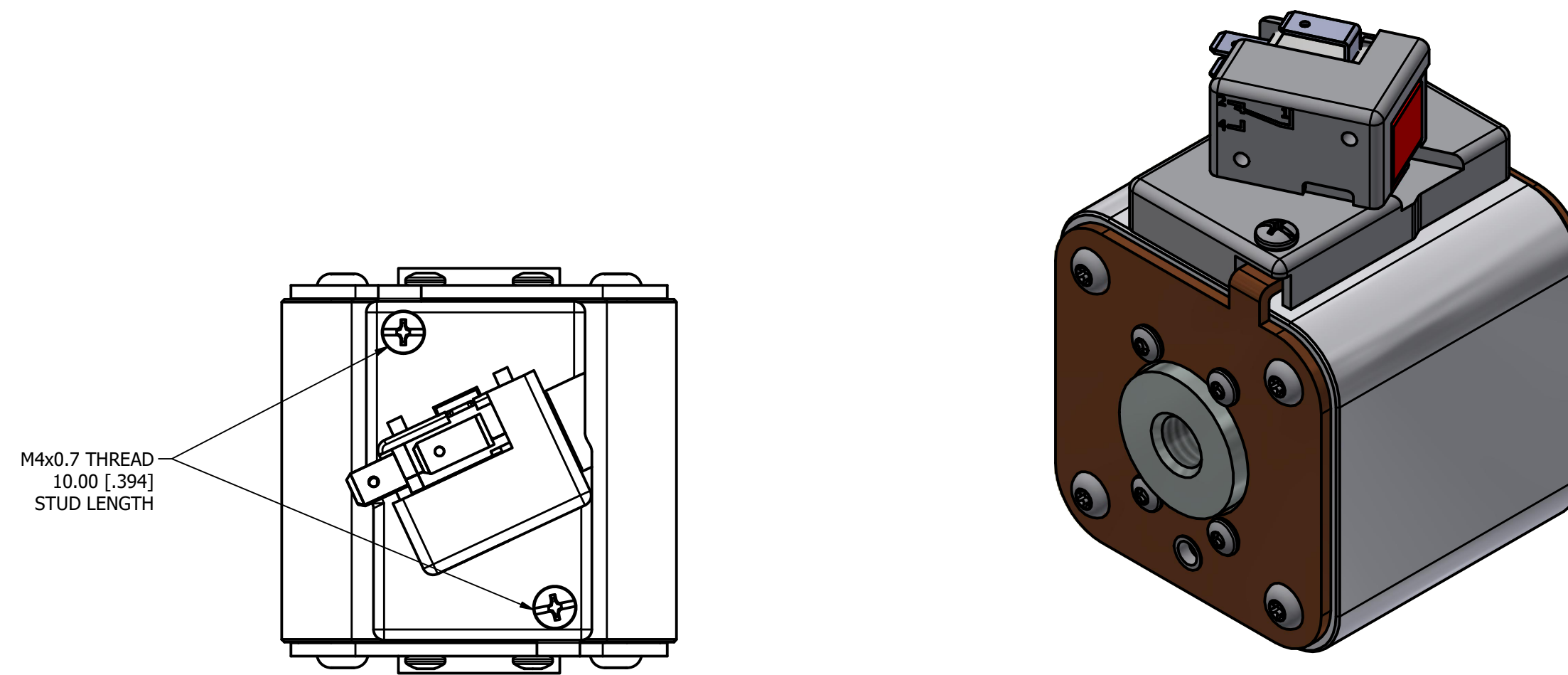
|  |               |                             |              |
|--|---------------|-----------------------------|--------------|
| <b>Littelfuse</b><br>CHICAGO, ILLINOIS 60631 | REVISION<br>E | DRWG NO.<br>OL-PSR072FS0000 | SHEET 1 OF 1 |
|--|---------------|-----------------------------|--------------|

| REVISION |            | DESCRIPTION                                     |
|----------|------------|---|
| REV      | DATE       |   |
| A        | 01/10/2018 | 518685GCP - RELEASED -TV                        |
| B        | 8/30/18    | 519782ECP/D - CHG STUD TORQUE MRY               |
| C        | 5/5/22     | 525161ECP/D - CHANGE HEIGHT, ADD TOLERANCES MRY |
| D        | 5/19/22    | 525232ECP/D - UPDATE LENGTH DIMENSION MRY       |

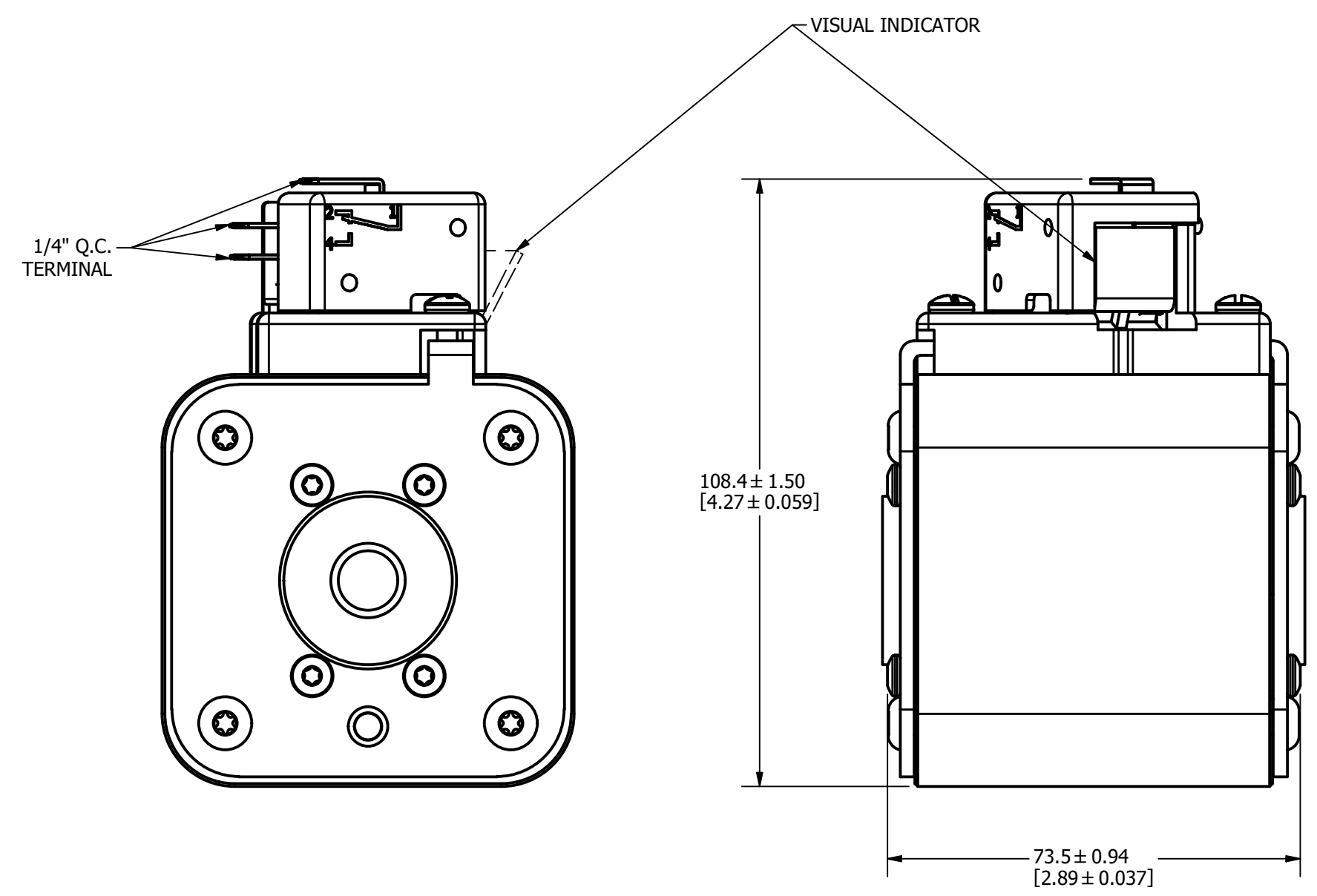
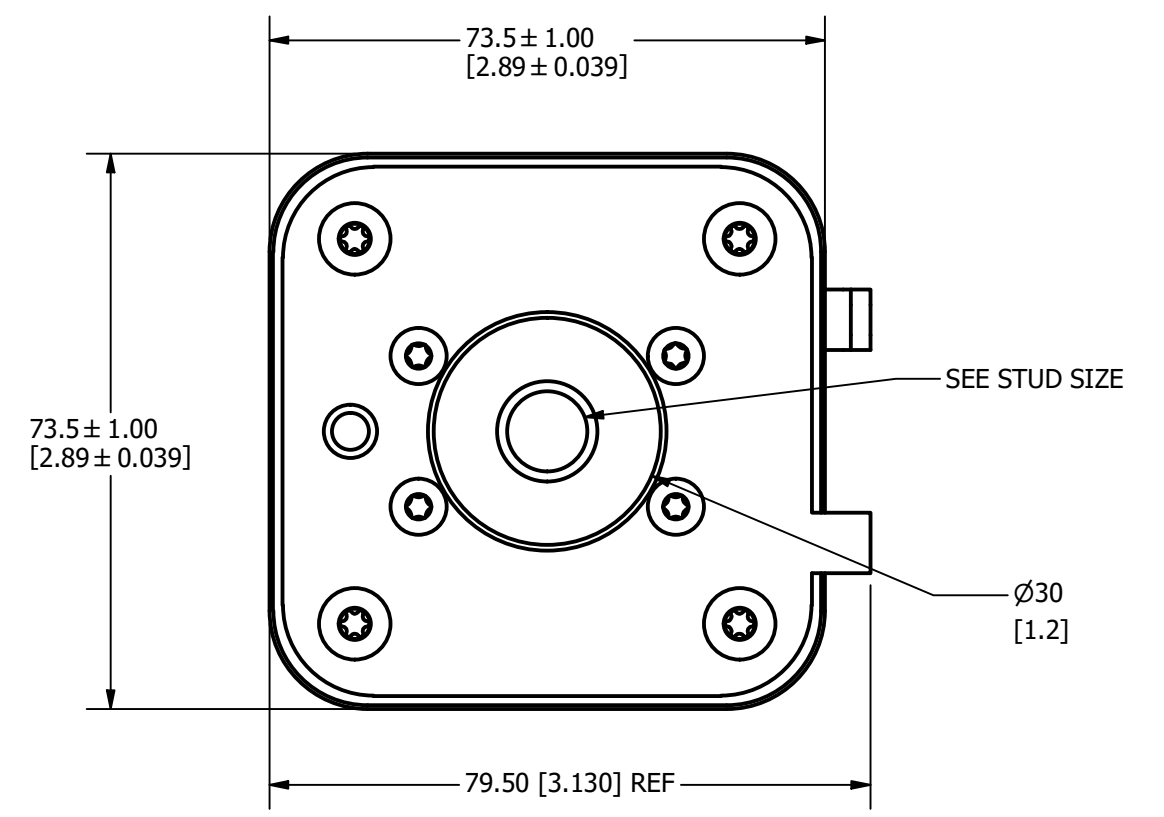
**MOUNTING SPECS:**

STUD SIZE: 1/2-13 UNC - 2B  $\nabla$ 13.0 [0.51]

STUD TORQUE: 45-55Nm



M4x0.7 THREAD  
10.00 [.394]  
STUD LENGTH

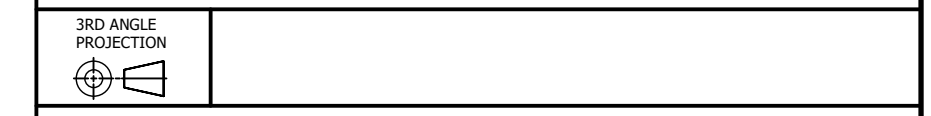


FUSE WITH MICROSWITCH

|      |  |
|------|--|
| ●    | DENOTES CRITICAL CHARACTERISTICS.  |
| CPK  | DENOTES CPK DIMENSIONS, -MINIMUM CPK VALUE   |
| (ST) | DENOTES A CHARACTERISTIC THAT PROVIDES AN INDICATION OF PROCESS PERFORMANCE. PROCEDURE FOR MEASUREMENT AND TRACKING TO BE DEFINED IN LITTELFUSE INSPECTION INSTRUCTIONS. |
| CP   | DENOTES CP DIMENSIONS, -MINIMUM CP VALUE. MUST BE WITHIN THE DIMENSIONAL LIMITATIONS SHOWN ON DRAWING AND INITIALLY LOCATED TO ALLOW FOR MAXIMUM TOOL LIFE.              |

|              |               |           |                            |
|--------------|---------------|-----------|----------------------------|
| MATL SPEC    | FINISH        |           |                            |
| DRW TVESELSK | DATE 2/4/2016 | SCALE NTS | FINISH GOOD WT GRAMS/PIECE |

UNLESS OTHERWISE SPECIFIED, DIMENSIONS ARE IN MILLIMETERS, DIMENSIONS IN BRACKETS [ ] ARE INCHES DIMENSIONING AND DO NOT INCLUDE PLATING. TOLERANCING TO BE INTERPRETED IN ACCORDANCE WITH ANSI Y14.5M-1994



TITLE SQUARE BODY 73 CASE - ENGLISH THREAD OUTLINE