

EXTERNAL



ELECTRIFICATION, SMART BUILDINGS

# SMISLINE TP

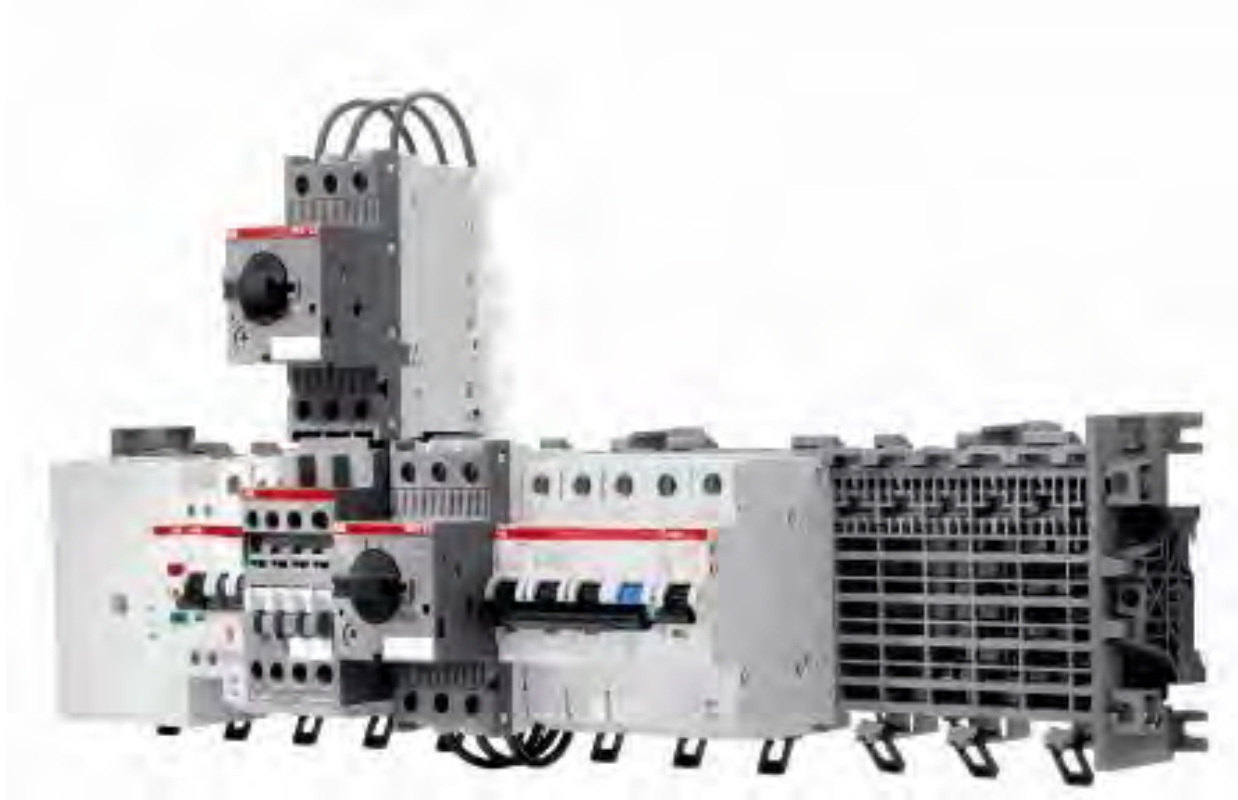
## Customer Training: Plug-in Busbar System Product Overview

December 2023

---

# SMISLINE TP Plug-in Busbar System

## Product description



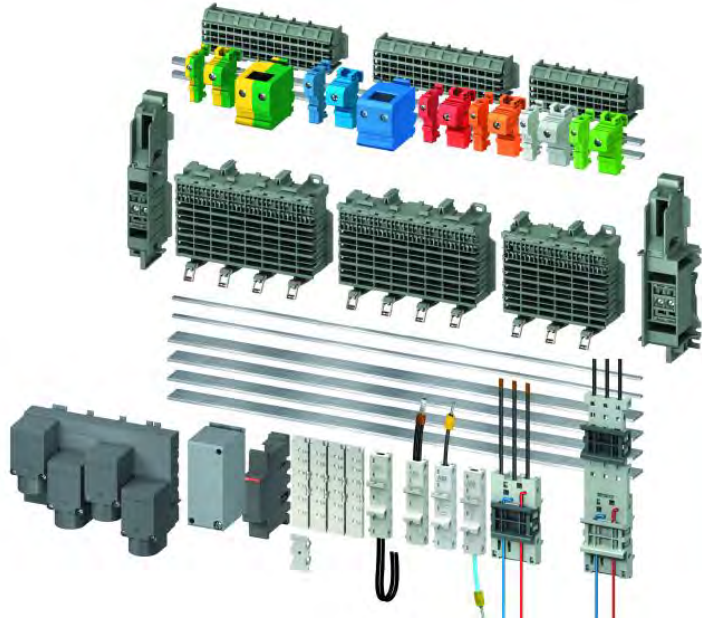
ABB's **SMISLINE Touch Proof** is a UL508 busbar system encompassing the world's first pluggable socket system ensuring operational safety, flexibility, and easy installation.

It is also the perfect fit for any application where costly downtime must be avoided.

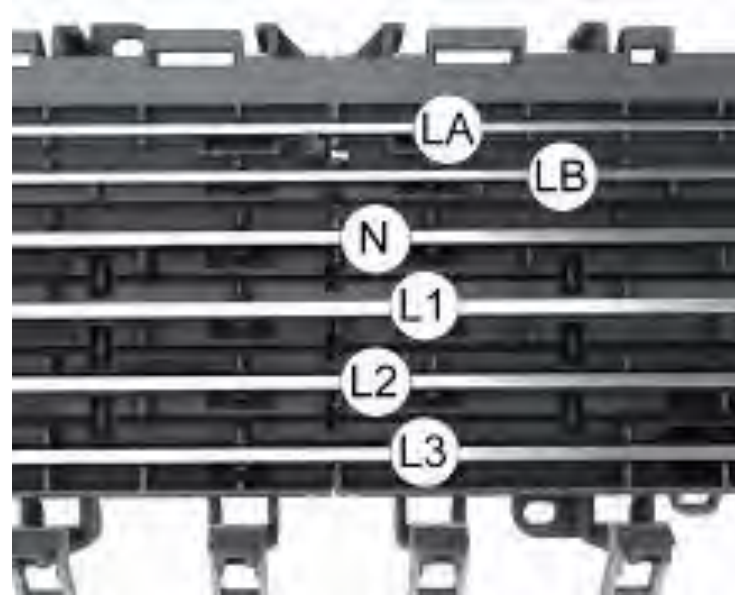
# SMISLINE TP

125A and 250A Busbar system UL508 approved

## Complete socket scheme



## Busbar



## Additional socket



Modular system to meet your project needs.

# SMISLINE TP

## Busbar system - Technical overview



|                                       |   |
|---------------------------------------|---|
| Max Rated Voltage Un                  | UL508: 600 V AC   |
| Max rated current (busbar):           | 125Amps or 250 Amps   |
| Max. rated current busbars<br>LA, LB: | 40 Amps (UL approval for 125 Amps system only)                                      |
| Series rating (with XT4<br>upstream)  | Up to 50 kA at 480 Y/277 V (3 pole MCB up to 35 Amps)                               |
| MCBs                                  | SUP400M (Direct Pluggable) up to 35 Amps- 100% rated<br>MCB + Adapter up to 63 Amps |

---

# What is **SMISLINE TP?**

UL approved plug-in distribution system

ABB Products Proudly Distributed by Gross Automation.  
Please call +1 (262) 252-1600 or email [sales@grossautomation.com](mailto:sales@grossautomation.com).

# SMISLINE TP

Incoming alternatives, UL approved

## 125 A

ZLS25X , ZLSP924

Incoming block / individual feeders (right/left)



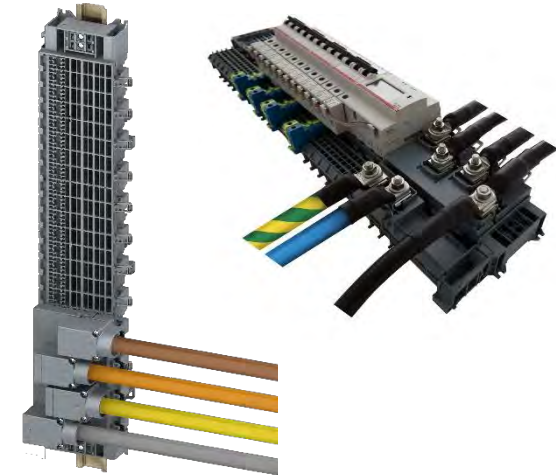
## 250 A

ZLS25X (250A), ZL924, ZLSP934, ZLSP935

Right / Left individual feeders



Bolt-on solution (right / left)



# SMISLINE TP

## UL 489 Miniature circuit-breaker SUP400

Rated voltage  $U_n$ :

Rated current  $I_n$ :

Rated frequency  $f_n$ :

No. of poles:

Approvals:

Tripping characteristics

Short circuit current rating (acc. to UL 489)

277/480V

2 – 35A -100% rated

50/60Hz

1, 2, 3

UL 489, CSA 22.2 No. 5

K (C Oct 2023)

10kA



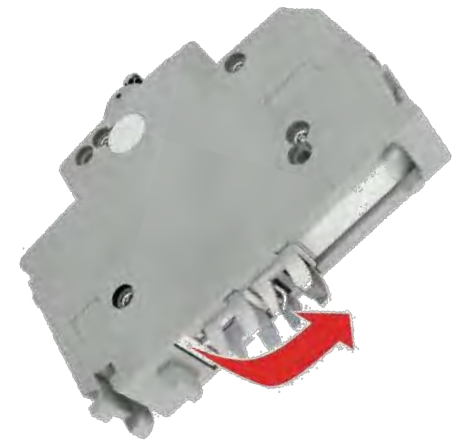
# SMISLINE TP

MCBs with unique pole conductor indicator

Plug contacts can be moved easily between L1, L2, and L3. A different arrangement can be set up quickly and easily. An inspection window glass on the front of the device displays the phase indicator.



Inspection glass with phase indicator on the front of the device.



Plug contacts can be moved easily between L1, L2 and L3. A different arrangement can be set up quickly and easily.

---

# SMISLINE TP - MCBs

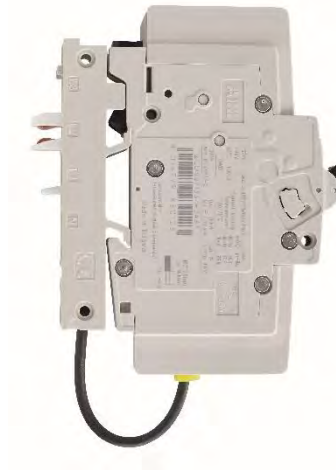
Adapter + MCB

**Adapter (up to 63 A)  
+ MCB**



## UL489 solution

- Adjustable contacting for line L1, L2, L3
- Multiple adapters can easily be combined



**Auxiliary and signal  
switch available**

S2C-H6RU / S2C-S6RU



---

# Advantages of a modular and pluggable design

Value proposition

ABB Products Proudly Distributed by Gross Automation.  
Please call +1 (262) 252-1600 or email [sales@grossautomation.com](mailto:sales@grossautomation.com).

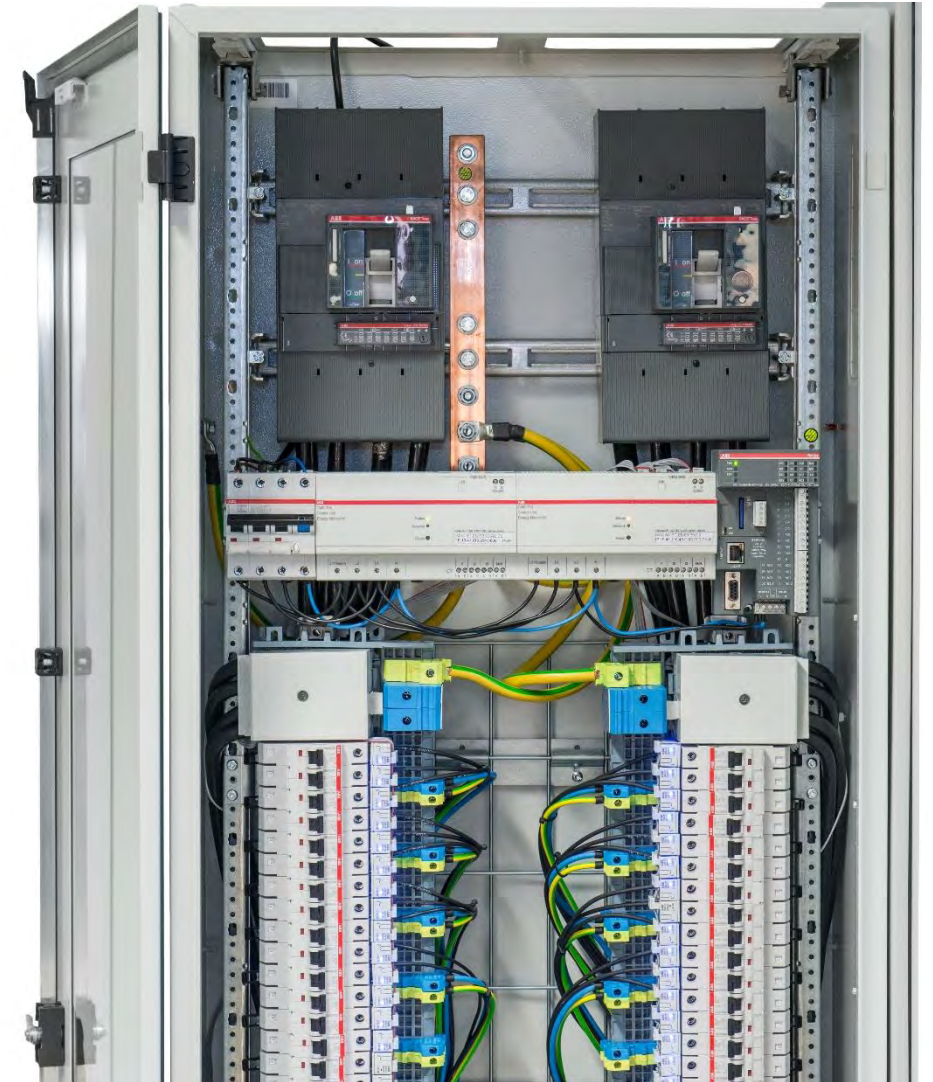
# Advantages of a modular and pluggable design

## Safety

### IP20 touch-safe design

- Prevents the access to live parts
- Protection against electrical hazards

The system remains fully touchproof, and there is no risk of electrical shock during load-free plugging and unplugging of devices. SMISLINE TP mitigates risk to persons through arc flash.



# Advantages of a modular and pluggable design

Time, space and cost-efficient

**Saves more than 25% of time during installation**

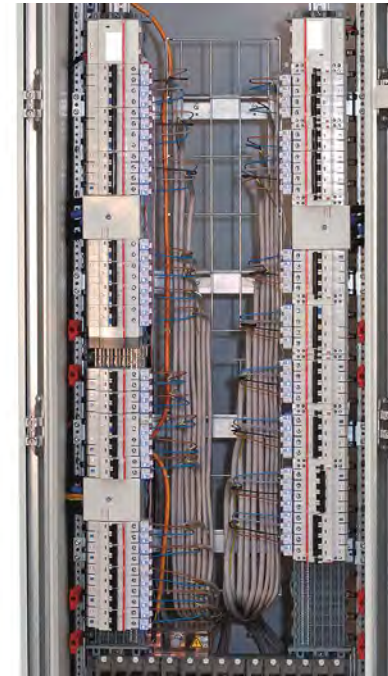
## Less wiring

- Input wiring is replaced by the busbar system
- Easier and cleaner installation
- Cost saving

**Up to 20% space saving vs horizontal assembly (SMISLINE or DIN rail)**

## Space saving - vertical installation

- Cost saving



**Smisline TP  
Vertical installation**



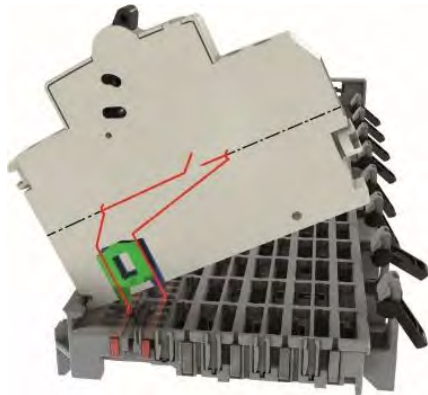
**Conventional  
DIN rail assembly**

# Advantages of a modular and pluggable design

Flexibility and easy installation

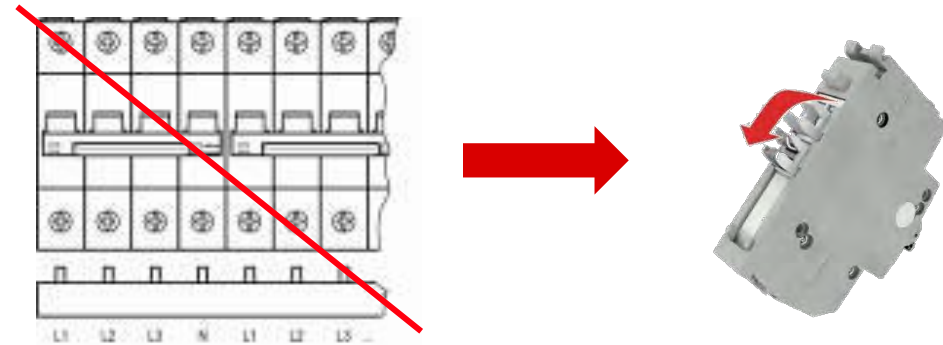
## Reduce downtime

- Outputs can be replaced easily and quickly because of the pluggable design



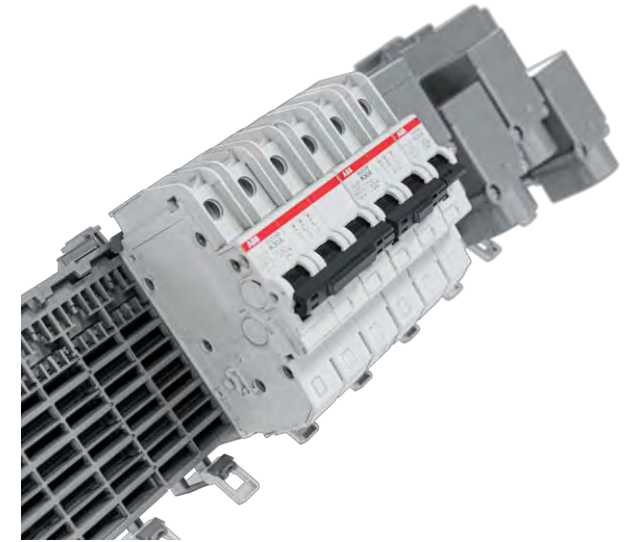
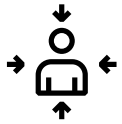
## Flexibility

- MCBs can be arranged in any sequence
- Quicker adaptations to changed data
- Easy expansion



# Starter packs with incoming terminals:

Feeding solutions



## What does it mean?

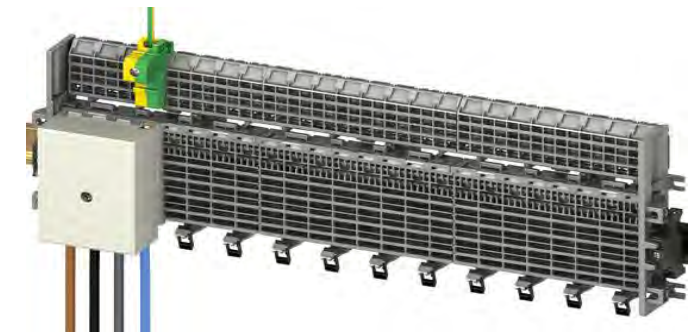
- The starter pack contains sockets, end socket pieces, and equipped busbars as required
- Available for busbar system 125 A and power bar system 250 A

## Why are we offering?

- The starter pack makes everything it easy for you
- There is no need to assemble the individual components

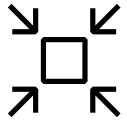
## What are the advantages?

- Only one order number and one price
- Simple solution
- Easy handling



# Direct feed busbar system 250 A:

Feeding solutions



## What does it mean?

- Direct feed starter pack solution allows a direct connection from the Power Bar System to the ABB XT4 Molded Case Circuit Breaker

## Why are we offering?

- The solution is built for a vertical design with one or two busbar system in one enclosure

## What are the advantages?

- Saves space and wiring time
- Direct connection ABB XT4
- Allows quick and simple handling

---

# Where can **SMISSLINE** be used?

Applications and opportunities

ABB Products Proudly Distributed by Gross Automation.  
Please call +1 (262) 252-1600 or email [sales@grossautomation.com](mailto:sales@grossautomation.com).

---

# SMISLINE TP

Applications: Critical power segments with high downtime costs

## Information Technologies/ Data Centers



## Processing Industry



## Airports



## Healthcare



## Commercial Buildings



## Heat Trace Systems



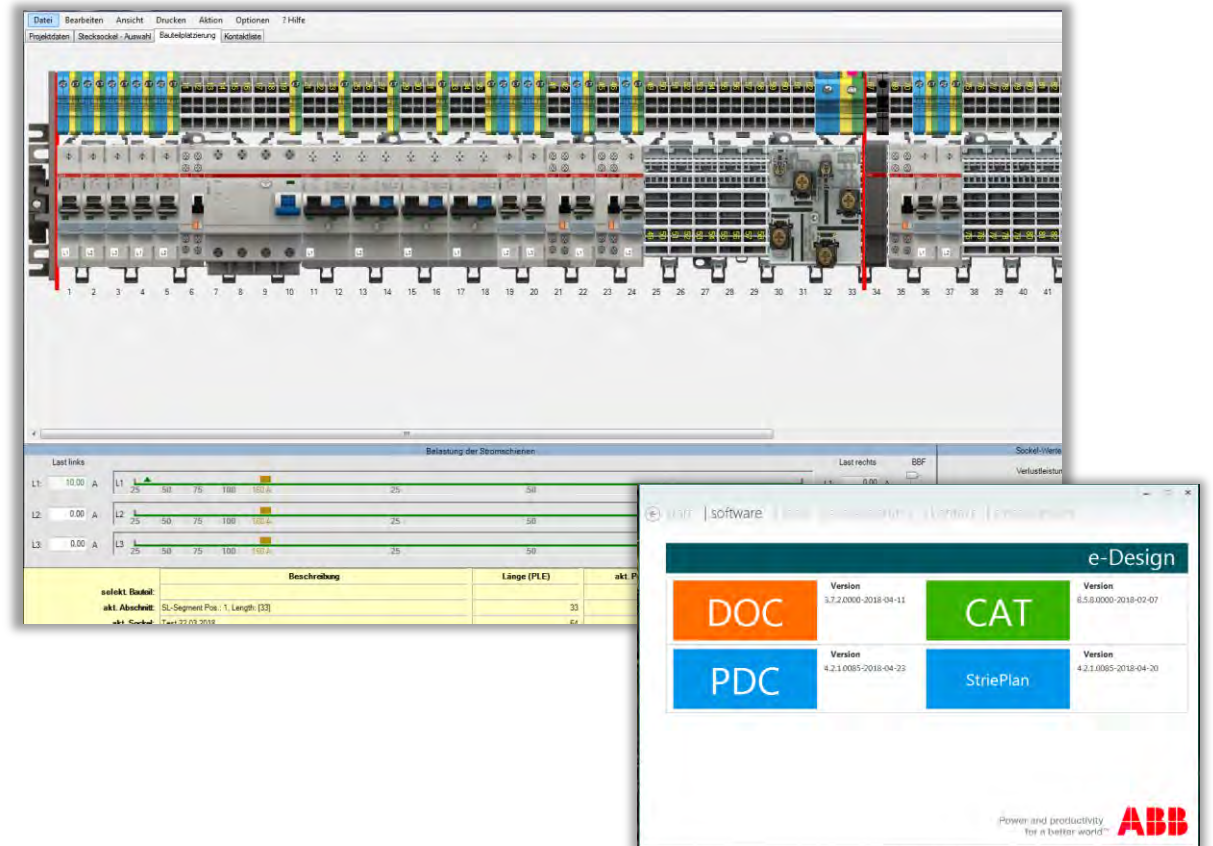
# — Resources

ABB Products Proudly Distributed by Gross Automation.  
Please call +1 (262) 252-1600 or email [sales@grossautomation.com](mailto:sales@grossautomation.com).

# SMISLINE TP

## Online system configurator

- Easy project planning of a SMISLINE system in a configurator
- Manage and optimize a project
- Free-form planning of SMISLINE rows



# Useful SMISLINE TP links



## Catalogs and Technical Data

- [Smisline TP catalog](#)
- [Technical Catalog](#)
- [SUP400 datasheet](#)
- [System Pro M Compact™ Catalog](#)
- [Installation and Instruction](#)
- [Certificates/Declarations of Conformity](#)

## Leaflets

- [Technical paper](#)
- [FAQs](#)

## Web links

- [Global homepage](#)
- [SMISLINE Product Video](#)
- [SMISLINE Product Video](#)



**ABB Products Proudly Distributed by Gross Automation.  
Please call +1 (262) 252-1600 or email [sales@grossautomation.com](mailto:sales@grossautomation.com).**