

small & robust

SHORTRON® connect with M12 connection

1-2-3

M12 connection
all around tight
smallest emergency-stop
with M12 connector





 Product configurator



SHORTTRON® connect

SHORTRON® connect

Ø 22.3 mm

MADE IN GERMANY



About Us

→ Pushbuttons and Switches

Panel Mount Jacks

Emergency-Stop Buttons

Bus Technology

RFD

Enclosures

Pedal Switches

Terminal Blocks

Type Index

SHORTRON® connect - small, quick, efficient

→ Simplicity

Quick and easy installation with M12 connector.



→ Efficiency

No enclosure necessary, low cabling effort, time-saving installation, also possible without technical staff.



→ Safety

High degree of protection IP65/IP67 in the front and on the rear. Anti-rotation/reverse polarity protection thanks to the M12 connector.



→ Flexibility

There are pushbuttons, selector and key switches, pilot light and emergency-stops in various contact type combinations available. The nameplates of the pushbuttons which can be exchanged can be printed in one or more colours.



→ Compactness

Low space requirement thanks to the compact construction with less mounting depth.



→ Harmony

Colour design of the pushbuttons and switches with black, silver-coloured or stainless steel front ring. Pleasant illumination on the variants with illumination option.



→ Functionality

High mechanical and electrical lifetime, pleasant and perceptible switching characteristic.



Overview SHORTRON® connect series



- | | | | |
|------------------------------------|---------|----------------------|---------|
| 01 Pushbuttons (ring illumination) | page 08 | 07 Potentiometers | page 13 |
| 02 Emergency-stops | page 12 | 08 Mounting brackets | page 23 |
| 03 Selector switches | page 15 | | |
| 04 Key switches | page 18 | | |
| 05 Pilot lights | page 21 | | |
| 06 Enabling switches | page 22 | | |

* depending on the type the IP degree can be different in the front or rear

Housing colours (silver-coloured, black, stainless steel polished)



degree of protection



operating travel



illuminating option



labelling option



SHORTRON® connect

Ø 22.3 mm

MADE IN GERMANY



About Us

← Pushbuttons and Switches

Panel Mount Jacks

Emergency-Stop Buttons

Bus Technology

RFID

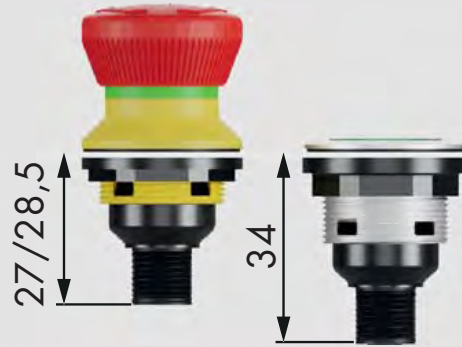
Enclosures

Pedal Switches

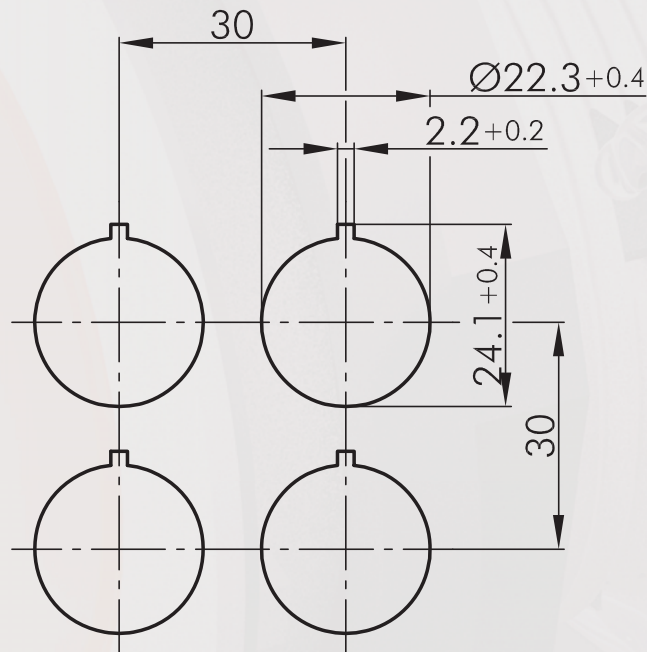
Terminal Blocks

Type Index

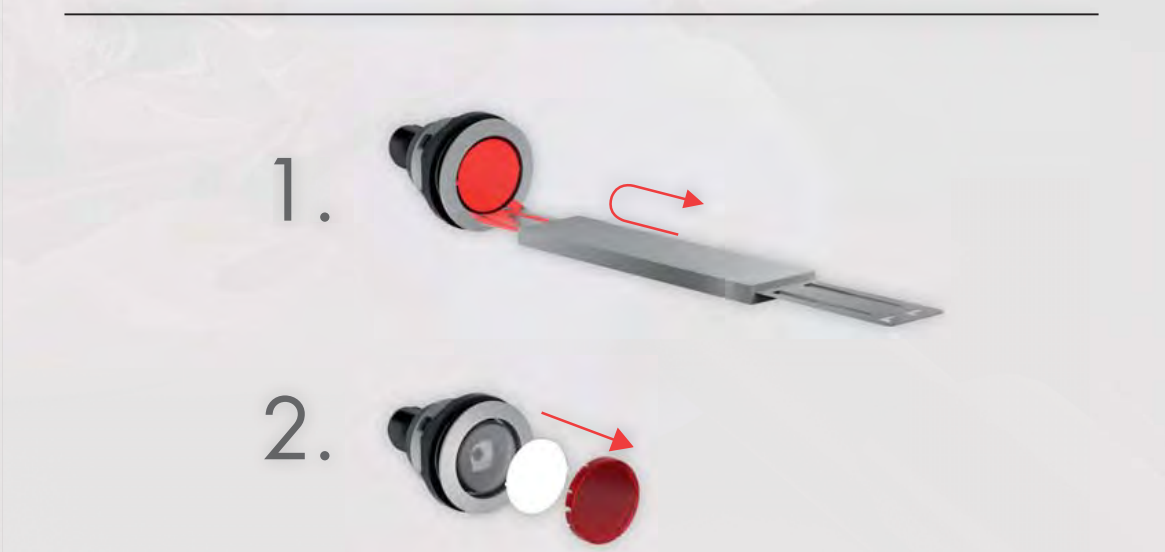
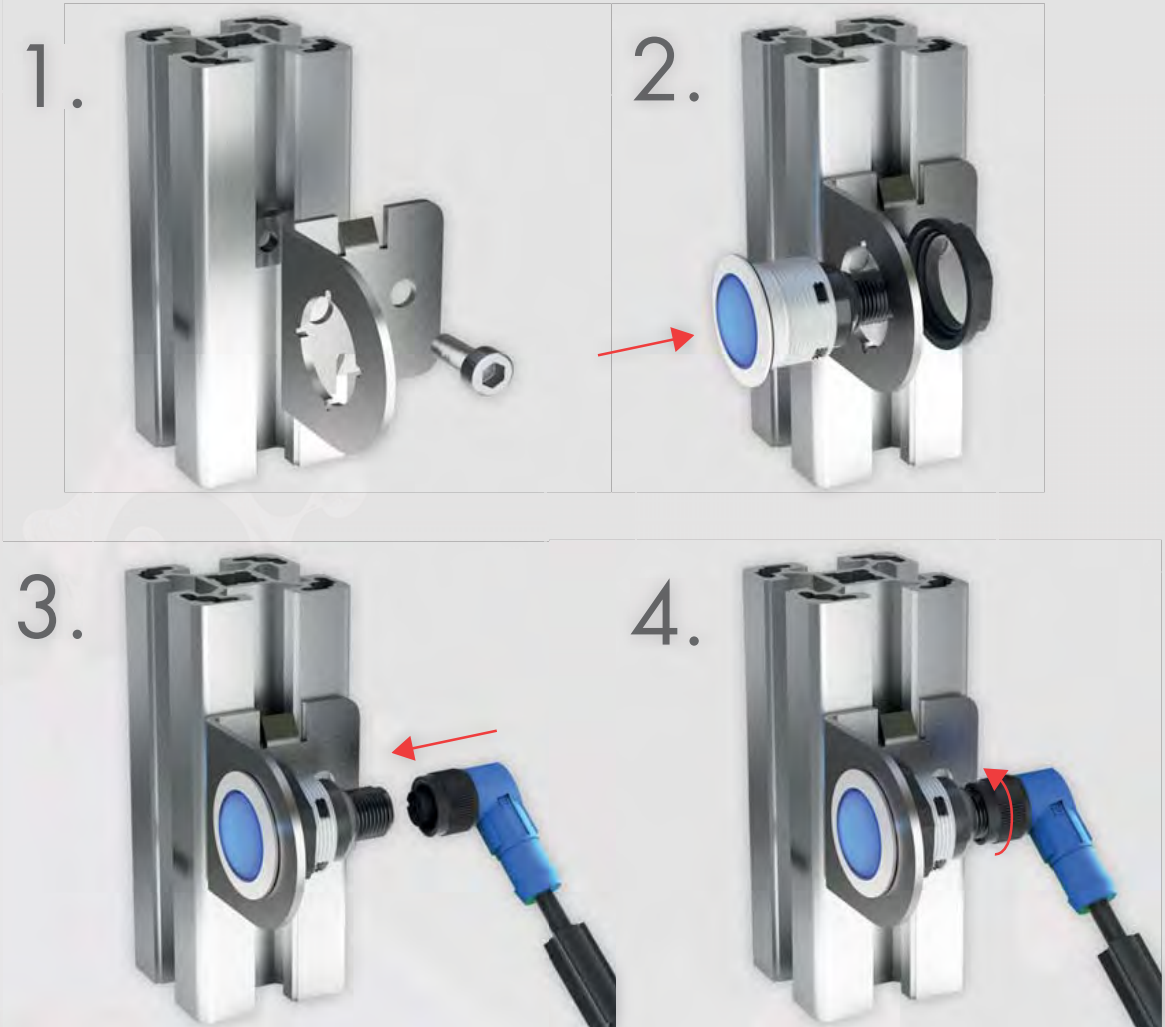
Mounting depth dimensions



Cutout dimensions



Mounting and service instructions



SHORTRON® connect

Ø 22.3 mm

MADE IN GERMANY



About Us

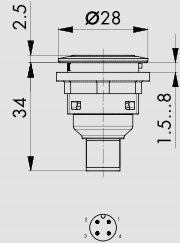
Pushbuttons

Illustration

Dimensions

IP65
IP67

2.3mm



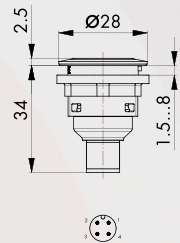
Pushbutton with 4-pole M12 connector

Contact equipment	1 NC + 1 NO
Standard	EN 60947-5-1, EN 61058-1
Connection type	4-pole M12 connector (integrated), A coded
Contact material	AgNi

	0 1 2	0 1 2	0 1 2
PIN 1 / PIN 2			
	PIN 1 / PIN 2	PIN 1 / PIN 4	PIN 1 / PIN 2
			PIN 3 n.C.
			PIN 3 n.C.
Front bezel	1 NO	2 NO	1 NC + 1 NO
silver-coloured	STI_C007	STII_C009	STOI_C008
black	SSWTI_C007	SSWTII_C009	SSWTOI_C008
stainless steel, polished	SVATI_C007	SVATII_C009	SVATOI_C008

IP65
IP67

2.3mm



Illuminated pushbutton with 4-pole M12 connector

incl. white LED

Contact equipment	1 NO
Standard	EN 60947-5-1, EN 61058-1
Connection type	4-pole M12 connector (integrated), A coded
Contact material	AgNi

	0 1 2	0 1 2
PIN 1 / PIN 2		
Front bezel	1 NO	
silver-coloured	STLI_C005	
black	SSWTLI_C005	
stainless steel, polished	SVATLI_C005	

Panel Mount Jacks

Emergency-Stop Buttons

Bus Technology

RFD

Enclosures

Pedal Switches

Terminal Blocks

Type Index

Accessories for pushbuttons and switches

Illustration

Dimensions

Accessories



Flat lens, transparent

Colour	blue		T22RRBL
	yellow		T22RRGB
	green		T22RRGN
	clear		T22RRKL
	red		T22RRRT
	opal white		T22RRWS



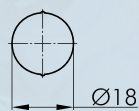
High lens, transparent

Colour	blue		T22HRRBL
	yellow		T22HRRGB
	green		T22HRRGN
	clear		T22HRRKL
	red		T22HRRRT
	opal white		T22HRRWS



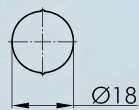
Flat lens, non-transparent

Colour	blue		T22RRGBL
	yellow		T22RRGGB
	green		T22RRGGN
	black		T22RRGSW
	red		T22RRGRT
	white		T22RRGWS



Blank nameplate

BSRRU



Nameplate with standard imprint

please specify index number

BSRR...

IP67



Sealing cap

made of silicone rubber, down to -50°C

TK28S

About Us

→ Pushbuttons and Switches

Panel Mount Jacks

Emergency-Stop Buttons

Bus Technology

RFID

Enclosures

Pedal Switches

Terminal Blocks

Type Index

SHORTRON® connect

Ø 22.3 mm

MADE IN GERMANY



About Us

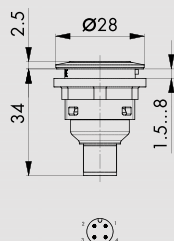
Pushbuttons

Illustration

Dimensions

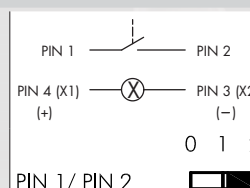
IP65
IP67

2,3mm



Pushbutton with ring illumination and 4-pole M12 connector with integrated 4-pole M12 connector, A coded incl. lens and white LED

Contact equipment	1 NO
Standard	EN 60947-5-1, EN 61058-1
Connection type	4-pole M12 connector (integrated), A coded
Contact material	AgNi



Front bezel		Illuminated ring		
silver-coloured		white		STLRWI_C005
silver-coloured		red		STLRRI_C005
silver-coloured		green		STLRGI_C005
silver-coloured		yellow		STLRYI_C005
silver-coloured		blue		STLRBI_C005
black		white		SSWTLRWI_C005
black		red		SSWTLRRI_C005
black		green		SSWTLRGI_C005
black		yellow		SSWTLRYI_C005
black		blue		SSWTLRBI_C005
stainless steel, polished		white		SVATLRWI_C005
stainless steel, polished		red		SVATLRRI_C005
stainless steel, polished		green		SVATLRGI_C005
stainless steel, polished		blue		SVATLRBI_C005
stainless steel, polished		yellow		SVATLRYI_C005

Panel Mount Jacks

Emergency-Stop Buttons

Bus Technology

RFD

Enclosures

Pedal Switches

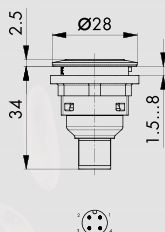
Terminal Blocks

Type Index

Pushbuttons

Illustration

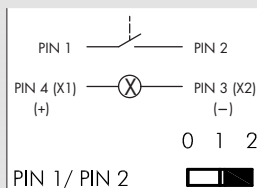
Dimensions



Pushbutton with ring illumination and laser printing 4-pole M12 connector

standard imprints see nameplates (please specify index number) special inscription on request
with integrated 4-pole M12 connector, A coded incl. lens and white LED

Contact equipment	1 NO
Connection type	4-pole M12, A coded



Front bezel		Illuminated ring		1 NO
silver-coloured		white		STLRWI..._C005
silver-coloured		red		STLRRI..._C005
silver-coloured		green		STLRGI..._C005
silver-coloured		yellow		STLRYI..._C005
silver-coloured		blue		STLRBI..._C005
black		white		SSWTLRWI..._C005
black		red		SSWTLRRI..._C005
black		green		SSWTLRGI..._C005
black		yellow		SSWTLRYI..._C005
black		blue		SSWTLRBI..._C005
stainless steel, polished		white		SVATLRWI..._C005
stainless steel, polished		red		SVATLRRI..._C005
stainless steel, polished		green		SVATLRGI..._C005
stainless steel, polished		yellow		SVATLRYI..._C005
stainless steel, polished		blue		SVATLRBI..._C005

About Us

→ Pushbuttons and Switches

Panel Mount Jacks

Emergency-Stop Buttons

Bus Technology

RFID

Enclosures

Pedal Switches

Terminal Blocks

Type Index

SHORTRON® connect

Ø 22.3 mm

MADE IN GERMANY



About Us

Pushbuttons and Switches

Panel Mount Jacks

Emergency-Stop Buttons

Bus Technology

RFD

Enclosures

Pedal Switches

Terminal Blocks

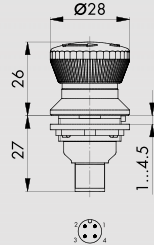
Type Index

Emergency-stops

Illustration

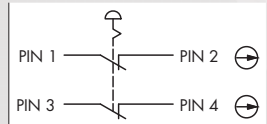
Dimensions

IP65
IP67



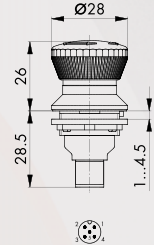
Emergency-stop with 4 pole M12 connector

Contact equipment	2 NC
Foolproof	yes
Switching position indicator	yes
Anti-lock collar	no
Release	twist right or left
Standard	EN 60947-5-1, EN 60947-5-5, EN ISO 13850
Connection type	4-pole M12 connector (integrated), A coded
Contact material	AgNi



Front bezel		mushroom head		2 NC
yellow		red		FRVKOO_C001

IP65
IP67



Emergency-stop with 5-pole M12 connector AIDA

Foolproof	yes
Switching position indicator	yes
Anti-lock collar	no
Release	twist right or left
Standard	EN 60947-5-1, EN 60947-5-5, EN ISO 13850
Connection type	5-pole M12 connector (integrated), A coded, AIDA
Contact material	AgNi



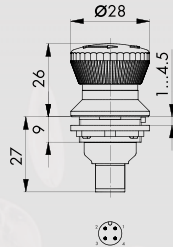
Front bezel		mushroom head		2 NC	2 NC + 1 NO
yellow		red		FRVKOO_C111	FRVKOOI_C112

Emergency-stops

Illustration

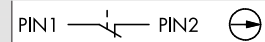
Dimensions

IP65
IP67



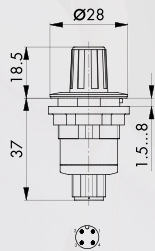
Emergency-stop with 4 pole M12 connector

Contact equipment	1 NC
Foolproof	yes
Switching position indicator	yes
Anti-lock collar	no
Release	twist right or left
Standard	EN 60947-5-1, EN 60947-5-5, EN ISO 13850
Connection type	4-pole M12 connector (integrated), A coded
Contact material	AgNi



Front bezel	mushroom head	PIN 1 — — PIN 2	⊖
yellow	red	1 NC	FRVKO_C006

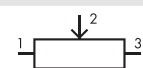
IP65
IP67



Potentiometer 1 kOhm

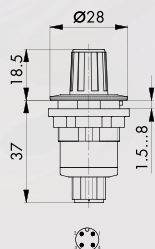
- with 1 kOhm potentiometer
- rotation angle 260°
- with integrated scale
- 100.000 cycles
- operating temperature -20°C ... 70°C

Connection type 4-pole M12, A coded



Front bezel		
silver-coloured		SR1K_C090
black		SSWR1K_C090
stainless steel, polished		SVAR1K_C090

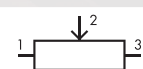
IP65
IP67



Potentiometer 5 kOhm

- with 5 kOhm potentiometer
- rotation angle 260°
- with integrated scale
- 100.000 cycles
- operating temperature -20°C ... 70°C

Connection type 4-pole M12, A coded



Front bezel		
silver-coloured		SR5K_C090
black		SSWR5K_C090
stainless steel, polished		SVAR5K_C090

SHORTRON® connect

Ø 22.3 mm

MADE IN GERMANY



About Us

Pushbuttons
and Switches

Panel Mount Jacks

Emergency-Stop Buttons

Bus Technology

RFD

Enclosures

Pedal Switches

Terminal Blocks

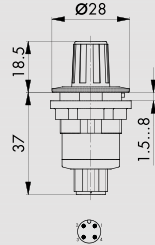
Type Index

Potentiometers

Illustration

Dimensions

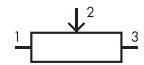
IP65
IP67



Potentiometer 10 kOhm

- with 10 kOhm potentiometer
- rotation angle 260°
- with integrated scale
- 100.000 cycles
- operating temperature -20°C ... 70°C

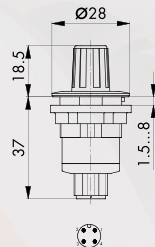
Connection type 4-pole M12, A coded



Front bezel

silver-coloured		SR10K_C090
black		SSWR10K_C090
stainless steel, polished		SVAR10K_C090

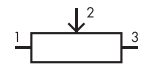
IP65
IP67



Potentiometer 50 kOhm

- with 50 kOhm potentiometer
- rotation angle 260°
- with integrated scale
- 100.000 cycles
- operating temperature -20°C ... 70°C

Connection type 4-pole M12, A coded



Front bezel

silver-coloured		SR50K_C090
black		SSWR50K_C090
stainless steel, polished		SVAR50K_C090

Selector switches (momentary/maintained)

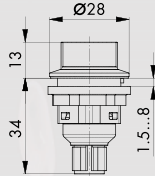
I = Switching position
> = Spring return

Illustration

Dimensions

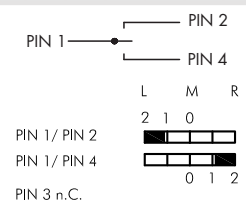
IP65

2,3mm

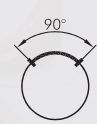


Selector switch, maintained, with 4-pole M12 connector

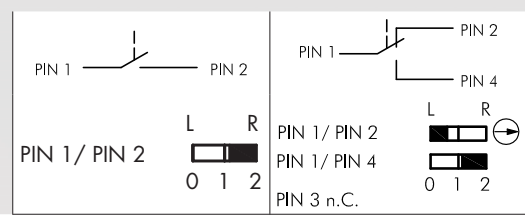
Contact equipment	2 NO
Standard	EN 60947-5-1, EN 61058-1
Connection type	4-pole M12 connector (integrated), A coded
Contact material	AgNi



Front bezel		2 NO
silver-coloured		SWBII_C009
black		SSWWBII_C009
stainless steel, polished		SVAWBII_C009



Front bezel		1 NO	1 NC + 1 NO
silver-coloured		SWAI_C007	SWAOI_C008
black		SSWWAI_C007	SSWAOI_C008
stainless steel, polished		SVAWAI_C007	SVAWAOI_C008



About Us

→ Pushbuttons and Switches

Panel Mount Jacks

Emergency-Stop Buttons

Bus Technology

RFID

Enclosures

Pedal Switches

Terminal Blocks

Type Index

SHORTRON® connect

Ø 22.3 mm

MADE IN GERMANY



About Us

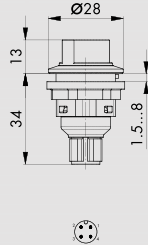
Selector switches (momentary/maintained)

I = Switching position
> = Spring return

Illustration

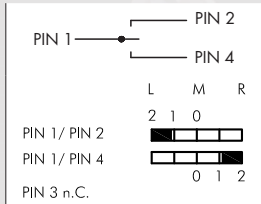
Dimensions

IP65

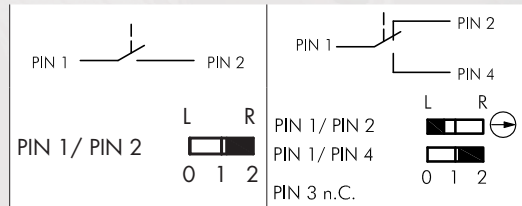


Selector switch, momentary, with 4-pole M12 connector

Contact equipment	2 NO
Standard	EN 60947-5-1, EN 61058-1
Connection type	4-pole M12 connector (integrated), A coded
Contact material	AgNi

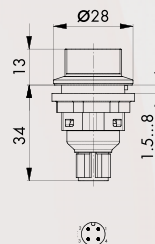


Front bezel		2 NO
silver-coloured		SSTBII_C009
black		SSWSTBII_C009
stainless steel, polished		SVASTBII_C009



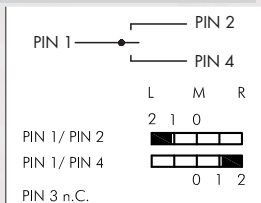
Front bezel		1 NO	1 NC + 1 NO
silver-coloured		SSTAI_C007	SSTAOI_C008
black		SSWSTAI_C007	SSWSTAOI_C008
stainless steel, polished		SVASTAI_C007	SVASTAOI_C008

IP65



Selector switch, left maintained, right momentary with 4-pole M12 connector

Contact equipment	2 NO
Standard	EN 60947-5-1, EN 61058-1
Connection type	4-pole M12 connector (integrated), A coded
Contact material	AgNi



Front bezel		2 NO
silver-coloured		SWCII_C009
black		SSWWCII_C009
stainless steel, polished		SVAWCII_C009



Panel Mount Jacks

Emergency-Stop Buttons

Bus Technology

RFID

Enclosures

Pedal Switches

Terminal Blocks

Type Index

Pushbuttons and Switches

Selector switches (momentary/maintained)

I = Switching position
> = Spring return

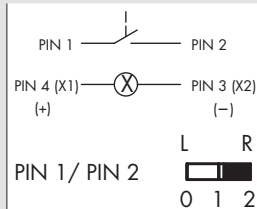
Illustration

Dimensions



Illuminated selector switch, maintained, with 4-pole M12 connector
incl. white LED

Contact equipment	1 NO
Standard	EN 60947-5-1, EN 61058-1
Connection type	4-pole M12 connector (integrated), A coded
Contact material	AgNi

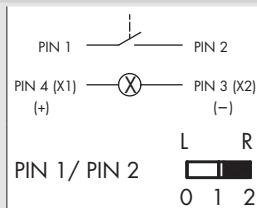


Front bezel		1 NO
silver-coloured		SWALI_C005
black		SSWWALI_C005
stainless steel, polished		SVAWALI_C005



Illuminated selector switch, momentary, with 4-pole M12 connector
incl. white LED

Contact equipment	1 NO
Standard	EN 60947-5-1, EN 61058-1
Connection type	4-pole M12 connector (integrated), A coded
Contact material	AgNi



Front bezel		1 NO
silver-coloured		SSTALI_C005
black		SSWSTALI_C005
stainless steel, polished		SVASTALI_C005

About Us

→ Pushbuttons and Switches

Panel Mount Jacks

Emergency-Stop Buttons

Bus Technology

RFID

Enclosures

Pedal Switches

Terminal Blocks

Type Index

SHORTRON® connect

Ø 22.3 mm

MADE IN GERMANY



About Us

Key switches (momentary/maintained)

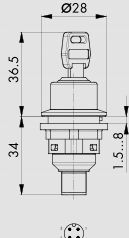
- I = Switching position
- > = Spring return
- O = Key removable position

Illustration

Dimensions

IP65

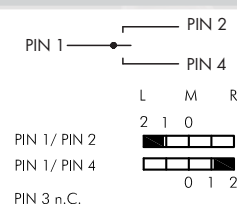
2.3mm



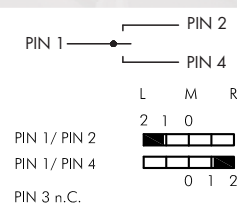
Key-operated switch, maintained, with 4-pole M12 connector

with integrated 4-pole M12 connector, A coded, including two keys, other lock types on request

Contact equipment	2 NO
Standard	EN 60947-5-1, EN 61058-1
Connection type	4-pole M12 connector (integrated), A coded
Contact material	AgNi



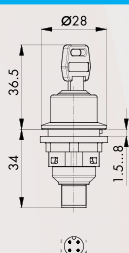
Front bezel		2 NO
silver-coloured		SSSA12II_C009
black		SSWSSA12II_C009
stainless steel, polished		SVASSA12II_C009



Front bezel		2 NO
silver-coloured		SSSA13II_C009
black		SSWSSA13II_C009
stainless steel, polished		SVASSA13II_C009

IP65

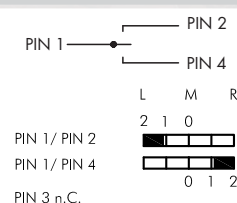
2.3mm



Key-operated switch, maintained (3 different keys) with 4-pole M12 connector

with integrated 4-pole M12 connector, A coded, incl. 3 keys, 1st key: two-way operation, 2nd key: operation to the left only, 3rd key: operation to the right only

Contact equipment	2 NO
Standard	EN 60947-5-1, EN 61058-1
Connection type	4-pole M12 connector (integrated), A coded
Contact material	AgNi



Front bezel		2 NO
silver-coloured		SSSA31II_C009
black		SSWSSA31II_C009
stainless steel, polished		SVASSA31II_C009

Pushbuttons and Switches

Panel Mount Jacks

Emergency-Stop Buttons

Bus Technology

RFID

Enclosures

Pedal Switches

Terminal Blocks

Type Index

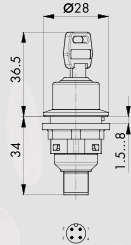
Key switches (momentary/maintained)

- I = Switching position
- > = Spring return
- O = Key removable position

Illustration

Dimensions

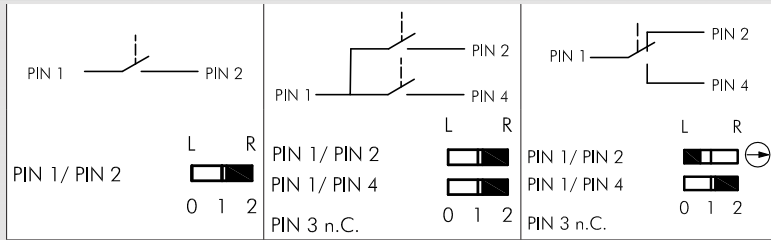
IP65
2,3mm



Key-operated switch, maintained, with 4-pole M12 connector

with integrated 4-pole M12 connector, A coded, including two keys, other lock types on request

Contact equipment	1 NC + 1 NO
Standard	EN 60947-5-1, EN 61058-1
Connection type	4-pole M12 connector (integrated), A coded
Contact material	AgNi



Front bezel	1 NO	2 NO	1 NC + 1 NO
silver-coloured	SSSA14I_C007	SSSA14II_C009	SSSA14OI_C008
black	SSWSSA14I_C007	SSWSSA14II_C009	SSWSSA14OI_C008
stainless steel, polished	SVASSA14I_C007	SVASSA14II_C009	SVASSA14OI_C008



Front bezel	1 NO	2 NO	1 NC + 1 NO
silver-coloured	SSSA15I_C007	SSSA15II_C009	SSSA15OI_C008
black	SSWSSA15I_C007	SSWSSA15II_C009	SSWSSA15OI_C008
stainless steel, polished	SVASSA15I_C007	SVASSA15II_C009	SVASSA15OI_C008



Front bezel	1 NO	2 NO	1 NC + 1 NO
silver-coloured	SSSA17I_C007	SSSA17II_C009	SSSA17OI_C008
black	SSWSSA17I_C007	SSWSSA17II_C009	SSWSSA17OI_C008
stainless steel, polished	SVASSA17I_C007	SVASSA17II_C009	SVASSA17OI_C008



Front bezel	1 NO	2 NO	1 NC + 1 NO
silver-coloured	SSSA18I_C007	SSSA18II_C009	SSSA18OI_C008
black	SSWSSA18I_C007	SSWSSA18II_C009	SSWSSA18OI_C008
stainless steel, polished	SVASSA18I_C007	SVASSA18II_C009	SVASSA18OI_C008

About Us

→ Pushbuttons and Switches

Panel Mount Jacks

Emergency-Stop Buttons

Bus Technology

RFID

Enclosures

Pedal Switches

Terminal Blocks

Type Index

SHORTRON® connect

Ø 22.3 mm

MADE IN GERMANY



About Us

Key switches (momentary/maintained)

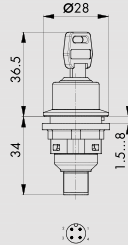
- I = Switching position
- > = Spring return
- O = Key removable position

Illustration

Dimensions

IP65

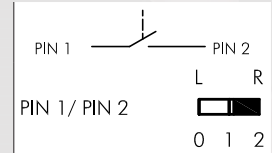
↓ 2.3mm



Key-operated switch, momentary, with 4-pole M12 connector

with integrated 4-pole M12 connector, A coded, including two keys, other lock types on request

Contact equipment	1 NO
Standard	EN 60947-5-1, EN 61058-1
Connection type	4-pole M12 connector (integrated), A coded
Contact material	AgNi



Front bezel		1 NO
silver-coloured		SSSA281_C007
black		SSWSSA281_C007
stainless steel, polished		SVASSA281_C007

Accessories



Spare keys
please specify key number

ESMIC...

You can find suitable panel jacks here



Pushbuttons and Switches

Panel Mount Jacks

Emergency-Stop Buttons

Bus Technology

RFD

Enclosures

Pedal Switches

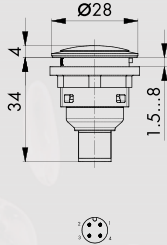
Terminal Blocks

Type Index

Pilot lights

Illustration

Dimensions

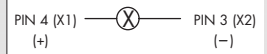


Pilot light with 4-pole M12 connector

incl. white LED

Connection type

4-pole M12, A coded



Front bezel		
silver-coloured		SN_C010
black		SSWN_C010
stainless steel, polished		SVAN_C010

Accessories



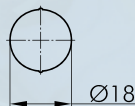
Lens

Colour

- blue
- yellow
- green
- clear
- red
- opal white

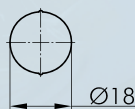


K22RRBL
K22RRGB
K22RRGN
K22RRKL
K22RRRT
K22RRWS



Blank nameplate

BSRRU



Nameplate with standard imprint

please specify index number

BSRR...

SHORTRON® connect

Ø 22.3 mm

MADE IN GERMANY



About Us

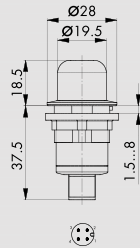
Enabling switches

Illustration

Dimensions

IP65

5mm



Enabling switch

3-position enabling switch acc. to EN 60947-5-8

Contact equipment

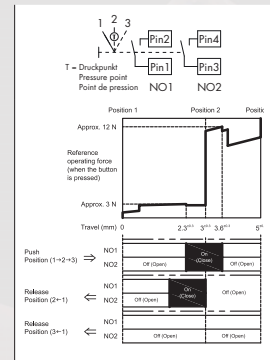
2 permissive contacts

Standard

EN 60947-5-1, EN 60947-5-8

Connection type

4-pole M12, A coded (NO1: Pin 1-2; NO2: Pin 3-4)



Front bezel		2 permissive contacts
silver-coloured		SZU_C002
black		SSWZU_C002
stainless steel, polished		SVAZU_C002

Panel Mount Jacks

Emergency-Stop Buttons

Bus Technology

RFD

Enclosures

Pedal Switches

Terminal Blocks

Type Index

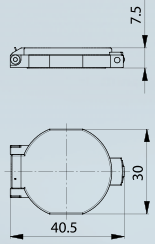
Accessories for pushbuttons and switches

Illustration


Dimensions

Accessories

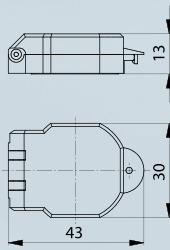
IP40




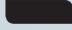
Protective lid, sealable

Colour transparent  **KDP22RR**

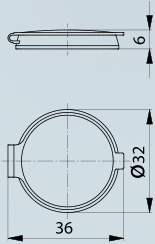
IP65
IP67



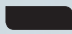
Robust protective lid, sealable

Colour transparent  **KDPR22RR**
black  **KDPR22RR_SW**

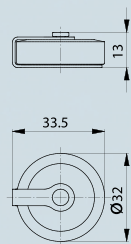
IP67



Protective lid made of TPE

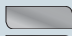
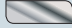
Colour black  **AK22RRSW**

IP69K



Robust protection cap



- captive lid, threadable
- suitable for various products of the series Rontron-R-Juwel, Rondex-Juwel and Shortron

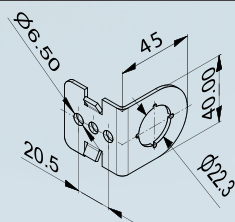
Colour aluminum  **SDAL22RR**
stainless steel, polished  **SDVA22RR**



Spacer ring

suitable for the Shortron series for panel thickness from 0.5 to 2.5 mm

Colour silver-coloured  **SDR**
black  **SDRSW**



Mounting bracket 90° / 1 mounting hole stainless steel 1.4301

for a fast and easy assembly on profiles (slot 8)

S_CW190

About Us

→ Pushbuttons and Switches

Panel Mount Jacks

Emergency-Stop Buttons

Bus Technology

RFID

Enclosures

Pedal Switches

Terminal Blocks

Type Index

SHORTRON® connect

MADE IN GERMANY



Ø 22.3 mm

About Us

→ Pushbuttons and Switches

Panel Mount Jacks

Emergency-Stop Buttons

Bus Technology

RFD

Enclosures

Pedal Switches

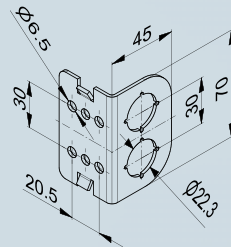
Terminal Blocks

Type Index

Accessories for pushbuttons and switches

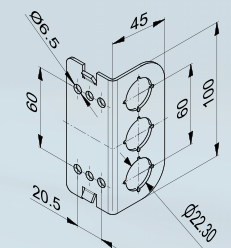
Illustration

Dimensions



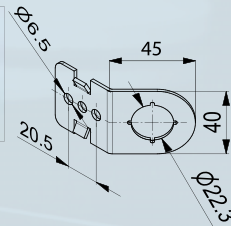
**Mounting bracket 90° /
2 mounting holes stainless steel 1.4301**
for a fast and easy assembly on profiles (slot 8)

S_CW290



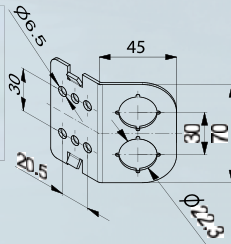
**Mounting bracket 90° /
3 mounting holes stainless steel 1.4301**
for a fast and easy assembly on profiles (slot 8)

S_CW390



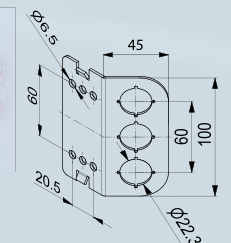
**Mounting bracket 135° /
1 mounting hole stainless steel 1.4301**
for a fast and easy assembly on profiles (slot 8)

S_CW145



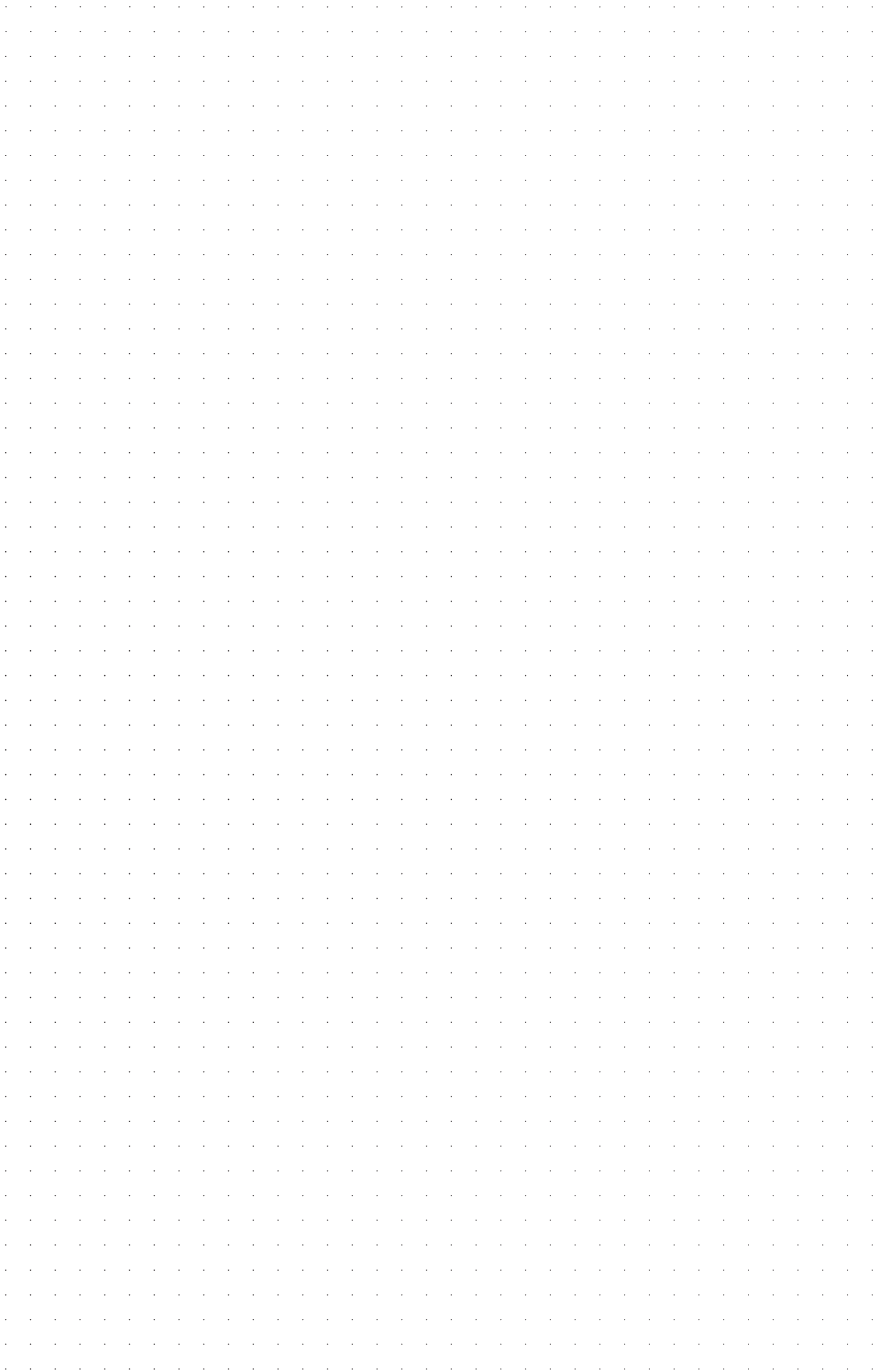
**Mounting bracket 135° /
2 mounting holes stainless steel 1.4301**
for a fast and easy assembly on profiles (slot 8)

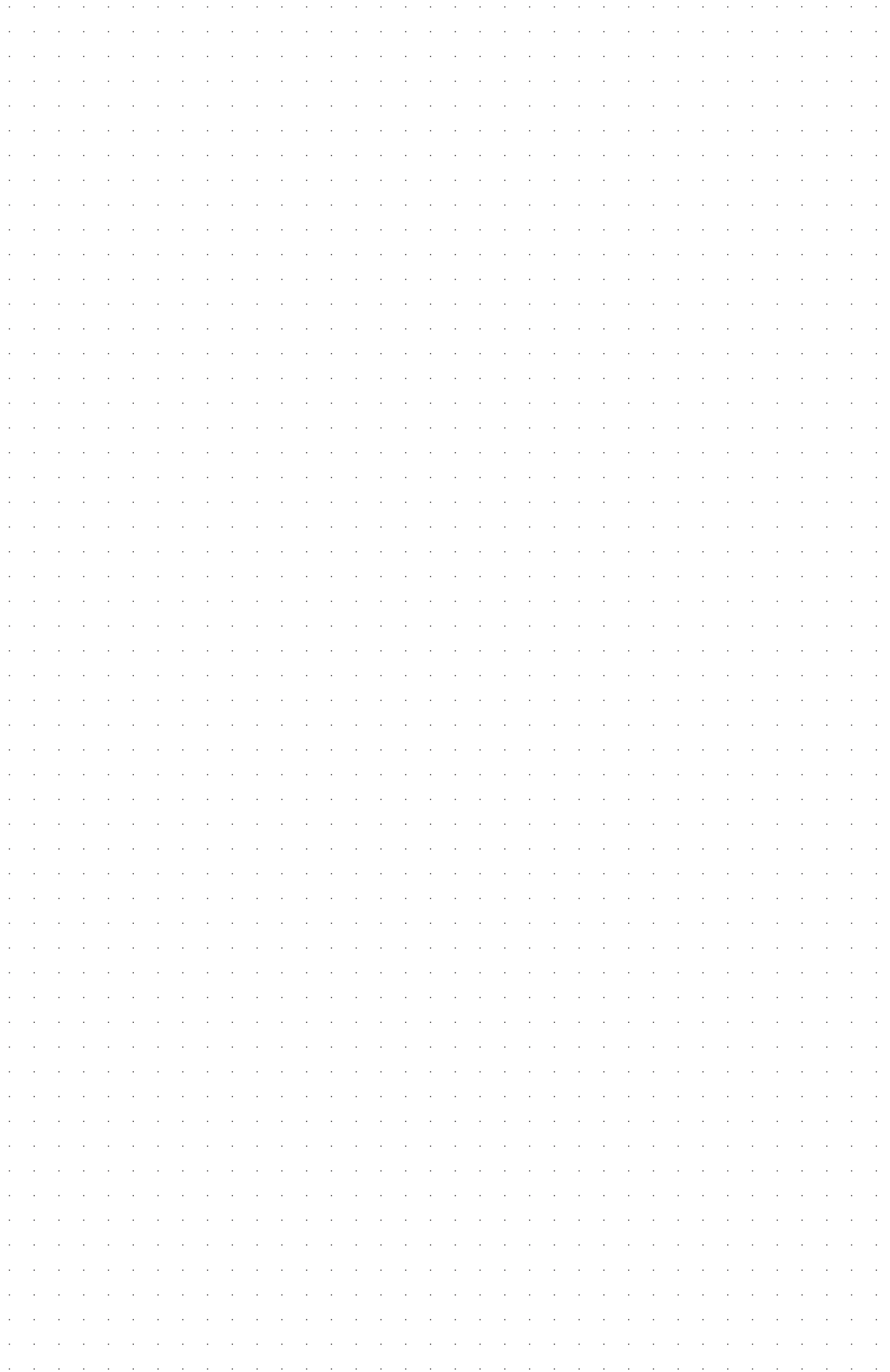
S_CW245

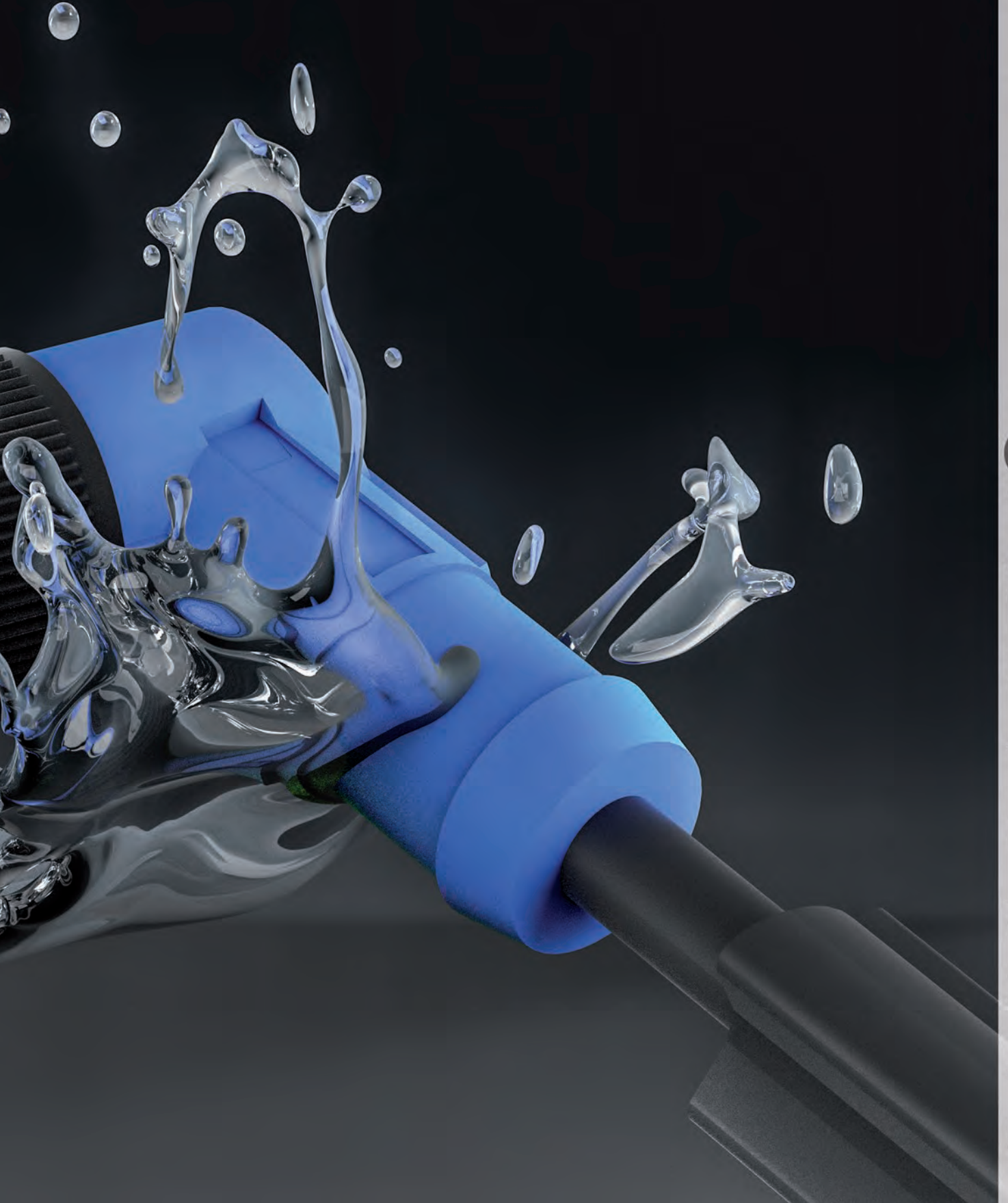


**Mounting bracket 135° /
3 mounting holes stainless steel 1.4301**
for a fast and easy assembly on profiles (slot 8)

S_CW345







SHORTTRON[®] connect



Georg Schlegel GmbH & Co. KG
Kapellenweg 4
88525 Dürmentingen / Germany

☎ +49 7371 502-0
📠 +49 7371 502 49
@ info@schlegel.biz
🌐 www.schlegel.biz



Subsidiaries:

Schlegel Elektrokontakt GmbH
Schönbachstr. 93
04299 Leipzig / **Germany**

☎ +49 341 86872-0
📠 +49 341 86872 43
@ leipzig@schlegel.biz
🌐 www.schlegel.biz

Georg Schlegel Vertriebs Ges.mbH
Samuel Morse-Straße 7
2700 Wiener Neustadt / **Austria**

☎ +43 2622 81313
📠 +43 2622 81313 19
@ schlegel@schlegel.at
🌐 www.schlegel.at